



# DROP SPREADERS

SAND IT. SALT IT. SPREAD IT.



**BAUMAN**  
**MANUFACTURING**

BACKED BY A TRADITION OF QUALITY

DROP SPREADERS



The line of Bauman Drop Spreaders is designed to prevent material waste and property damage by efficiently dispensing a range of de-icing products in a direct drop. With 9 models varying in capacity and drive, we have solutions for a range of applications.



**Save Time**



**Reduce Natural Impacts**



**Increase Profits**



# KEY FEATURES

## Applications

Due to their precise spread width, drop spreaders are ideal for narrow pathways, sidewalks, trails, winding laneways, and hard-to-reach spaces.



## Construction Features

- Heavy-duty mild steel
- Long-lasting powder coat finish
- Drive components oil sprayed for longevity
- Varied hitch frameworks and mounting brackets for adaptability

## Compatible Materials

- Sand
- Coarse / Fine Bulk Salt
- De-icing Pellets
- Environmentally friendly de-icer




**AGITATOR**

Centered in the hopper, the steel-constructed agitator prevents materials from bridging in the base near the distribution system.



**TENSION LEVER**


A standard feature across models, the Tension Lever is designed to control the amount of pressure the finger bar places on the drum.



**DISTRIBUTOR**

**Standard Sand Drum:** welded steel tabs periodically release pressure on fingers, allowing passage for de-icing materials.

**Optional Salt Drum:** tivar drum with milled pockets allows coarser materials to flow evenly.



**FINGER BAR**

The sturdy **polymer finger bar** applies pressure on the distribution drum, guiding material to the ground while maintaining quantity control.

It remains flexible in cold environments, ensuring consistent flow of material.

The Salt Drum is recommended for machines that **only** use bulk rock salt, particularly when they have a PTO drive option.

DROP SPREADERS



## DRIVES

**Manual** - Gear Driven  
**Towable** - Gear Driven



**Hydraulic** - Comes with Flow Control to adjust drop rate of material



**Electric** - Comes with Variable Speed Control & Wiring Harness



**PTO** - Comes with complete Italian driveline

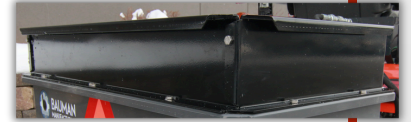


## ADD-ONS

### Extensions

Hopper extensions add additional capacity to the load between 2.5 and 6 cubic feet, increasing spread distance and productivity.

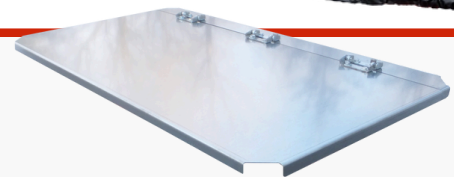
- 6" Extension
- 8" Extension
- 12" Extension



### Covers & Lids

Keep rain, sleet, snow, and other elements from contaminating or dampening de-icing material. This prevents potential freezing that could result in costly downtime. Lids provide additional protection from overspill to the rear of tractor when loading.

- Heavy Duty Vinyl Cover
- 14-Gauge Galvanized Steel Lid



## BRACKETS

Mounting brackets allow you to adapt your Drop Spreader to a number of vehicles ranging in make and model. All brackets are manufactured with durable steel and a powder-coat finish for added corrosion resistance.

### LEADING BRANDS

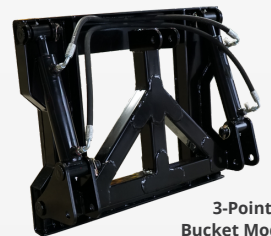
Avant	Kubota
Bobcat	Multihog
Case	Steiner
John Deere	Ventrac

### VEHICLES

Lawn Tractors
Sub-Compact Tractors
Compact Tractors
Skid Steers

### MOUNT OPTIONS

3 Point Hitch
Quick Tach, ALO
Front & Rear Mount Skid Steer
Custom



3-Point Tilt Bucket Models



Ventrac 440 Model

\*Custom-Made brackets available upon request.



MODEL 220P



- Capacity: 2 ft<sup>3</sup>
- Spread Width: 20"
- Est. Spread Distance: 1.5km
- Drive
  - Manual, Gear to Gear
- Length: 47"
- Width: 30.5"
- Height: 15"
- Weight: 90lbs.

OPTIONS

- Vinyl Cover

MODEL 430T



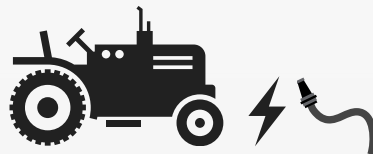
- Capacity: 4 ft<sup>3</sup>
- Spread Width: 30"
- Est. Spread Distance: 4km
- Drive
  - Towable, Gear to Gear
- Length: 43.5"
- Width: 45.5"
- Height: 43.5"
- Weight: 140lbs.
- Clevis Hitch

OPTIONS

- Galvanized Lid



MODEL 440



- Capacity: 4 ft<sup>3</sup>
- Spread Width: 40"
- Est. Spread Distance: 3km
- Drive
  - Electric: 12-Volt, 1/4 HP DC
  - Hydraulic: 3-6 GPM - Hoses Included
- Length: 19"
- Width: 47"
- Height: 23"
- Weight: 235lbs.

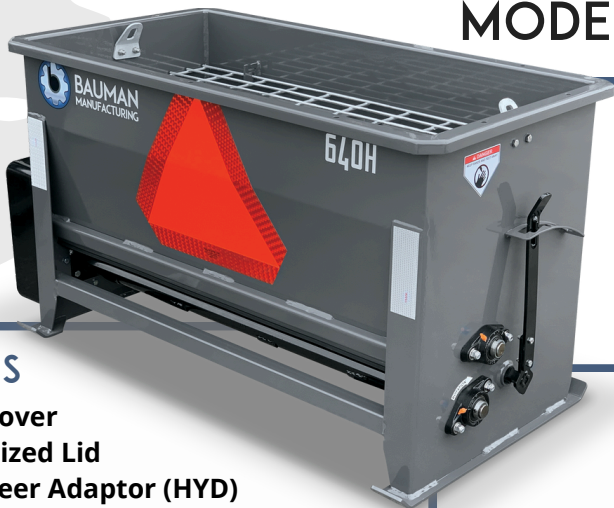
OPTIONS

- Vinyl Cover
- Galvanized Lid
- Kubota 3990 Mount
- Avant 530/730 Mount
- 3-Point Hitch Adaptor
- JD ClicknGo, 1585
- Ventrac Mount
- Steiner Mount

DROP SPREADERS



MODEL 640



- Capacity: 6 ft<sup>3</sup>
- Spread Width: 40"
- Est. Spread Distance: 5.4km
- Drive
  - PTO: 540 RPM
  - Hydraulic: 3-6 GPM - Hoses Included
- Length: 27"
- Width: 47"
- Height: 26"
- Weight: 315lbs.

OPTIONS

- Vinyl Cover
- Galvanized Lid
- Skid Steer Adaptor (HYD)
- Hopper Extension (6" / 12")



MODEL 960H



- Capacity: 9 ft<sup>3</sup>
- Spread Width: 60"
- Est. Spread Distance: 5.2km
- Drive
  - Hydraulic: 3-6 GPM - Hoses Included
- Length: 25.5"
- Width: 67.5"
- Height: 26"
- Weight: 440lbs.

OPTIONS

- Vinyl Cover
- Galvanized Lid
- Skid Steer Adaptor
- Hopper Extension (8")



MODEL 1140



- Capacity: 11 ft<sup>3</sup>
- Spread Width: 40"
- Est. Spread Distance: 9.5km
- Drive
  - PTO: 540 RPM
  - Hydraulic: 3-6 GPM - Hoses Included
- Length: 34"
- Width: 47"
- Height: 32"
- Weight: 370lbs.

OPTIONS

- Vinyl Cover
- Galvanized Lid
- Skid Steer Adaptor (HYD)
- Hopper Extension (8")

DROP SPREADERS



MODEL 1040SI



- Capacity: 10 ft<sup>3</sup>
- Spread Width: 40"
- Est. Spread Distance: 8.5km
- Drive
  - Electric: 12-Volt, 1/4HP DC
- Length: 58"
- Width: 47"
- Height: 30"
- Weight: 300lbs.

\*Includes Harness Straps

OPTIONS

- Vinyl Cover

MODEL 1040B

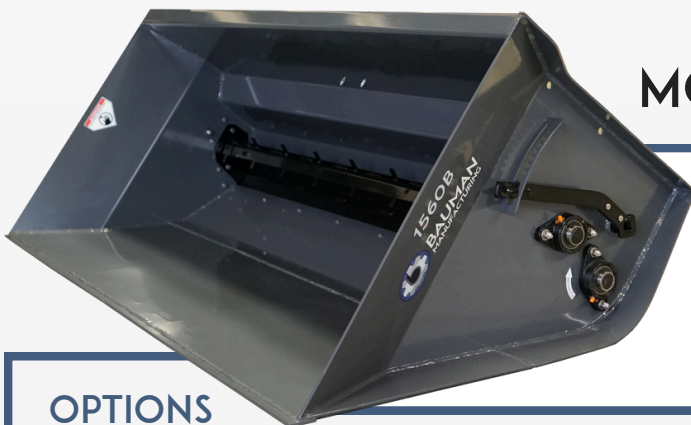


- Capacity: 10 cubic feet
- Spread Width: 40"
- Est. Spread Distance: 8.5km
- Drive
  - Hydraulic: 3-6 GPM
- Length: 33"
- Width: 49"
- Height: 26"
- Weight: 390lbs.

\*Hoses NOT Included.

OPTIONS

- Vinyl Cover
- 3 Point Tilt Mount
- Fixed 3 Point Mount
- Skid Steer Adaptor
- Bobcat S70 Mount
- JD 440/550 Mount
- ALO Mount



MODEL 1560B



- Capacity: 15 ft<sup>3</sup>
- Spread Width: 60"
- Est. Spread Distance: 8.5km
- Drive
  - Hydraulic: 3-6 GPM
- Length: 33"
- Width: 70"
- Height: 26"
- Weight: 510lbs.

\*Hoses NOT Included.

OPTIONS

- Skid Steer Adaptor
- JD 440/550 Mount
- ALO Mount
- 3 Point Tilt Mount
- Fixed 3 Point Mount

# SPECIFICATIONS

MODEL	CAPACITY	SPREAD WIDTH	EST. SPREAD DISTANCE	DRIVE	DIMENSIONS L x W x H	WEIGHT	VEHICLE
220	2 ft <sup>3</sup>	20"	1.5km	Manual	47" x 30.5" x 15"	90lbs	Walk Behind
430T	4 ft <sup>3</sup>	30"	2.23km	Towable	43.5" x 45.5" x 26"	140lbs	Towable
440	4 ft <sup>3</sup>	40"	3km	Electric, Hydraulic	19" x 47" x 23"	235lbs	Sub Compact Tractor
640	6.5 ft <sup>3</sup>	40"	5.4km	PTO, Hydraulic	27" x 47" x 26"	315lbs	Compact Tractor, Skid Steer
1140	11 ft <sup>3</sup>	40"	9.5km	PTO, Hydraulic	25.5" x 67.5" x 32"	370lbs	Compact Tractor
960H	9 ft <sup>3</sup>	60"	8.5km	Hydraulic	34" x 47" x 26"	440lbs	Compact Tractor
1040SI	10 ft <sup>3</sup>	40"	8.5km	Electric	58" x 47" x 30"	300lbs	UTV
1040B	10 ft <sup>3</sup>	40"	8.5km	Hydraulic	33" x 49" x 26"	390lbs	Compact Tractor, Skid Steer
1560B	15 ft <sup>3</sup>	60"	8.5km	Hydraulic	33" x 70" x 26"	510lbs	Compact Tractor, Skid Steer



Contact us today to find a  
Local Dealer.



[WWW.BAUMANMFG.COM](http://WWW.BAUMANMFG.COM)



**BAUMAN**  
MANUFACTURING

3 INDUSTRIAL DRIVE  
ELIMIRA, ON N3B2S1  
519-669-4333

[SALES@BAUMANMFG.COM](mailto:SALES@BAUMANMFG.COM)

