



A & B EAGLE LINE EQUIPMENT INC



2315 U.S. HWY 11 SOUTH
SWEETWATER, TN 37874
PHONE: (423) 337-2390
FAX: (423) 337-2338
EMAIL: sales@ab-eagleline.com
WEBSITE: www.ab-eagleline.com





A&B EQUIPMENT INC.

EAGLE LINE



2315 U.S. Highway 11 S. Sweetwater, TN. 37874-5059
 PHONE: (423) 337-2390 FAX: (423) 337-2338
 EMAIL: sales@ab-eagleline.com WEBSITE: www.ab-eagleline.com

BLEC MEDIUM DUTY CLEVIS HITCH BOX

	BLEC40	BLEC50	BLEC55	BLEC60	BLEC70
Category	1	1	1	1	1
Width	48"	60"	65"	72"	84"
No. Shanks	3	4	4	5	5
Weight (lbs.)	280	330	416	450	525
HP	15 - 25	15 - 25	25 - 35	25 - 35	25 - 35
Cutting Edges	3/8" x 6" Abrasion Resistant Steel, Interchangeable and Reversible				



- * ALL WELDED, NO ASSEMBLY REQUIRED * QUICK HITCH READY * CATEGORY 1 CLEVIS HITCH
- * REAR MOLDBOARD IS ROLL FORMED FOR ADDED STRENGTH AND IMPROVED SOIL FLOW
- * SCARIFIER SHANKS HAVE 3 DEPTH SETTINGS, AND REPLACEABLE POINTS

BLCW HEAVY DUTY CLEVIS HITCH BOX



	BLCW55	BLCW60	BLCW65	BLCW70	BLCW80
Category	1 / 2	1 / 2	1 / 2	1 / 2	1 / 2
Width	65"	72"	78"	84"	96"
No. Shanks	6	6	6	7	8
Weight (lbs.)	525	551	597	638	729
HP	25 - 60	25 - 60	25 - 60	25 - 60	25 - 60

**Cutting
Edges**

**3/8" x 6" Abrasion Resistant Steel, Interchangeable and
Reversible**

- * ALL WELDED, NO ASSEMBLY REQUIRED * QUICK HITCH READY * CAT. 1 / 2 COMBINATION HITCH**
- * REAR MOLDBOARD IS ROLL FORMED FOR ADDED STRENGTH AND IMPROVED SOIL FLOW**
- * SCARIFIER SHANKS HAVE 3 DEPTH SETTINGS, AND REPLACEABLE POINTS**



A&B EQUIPMENT INC.

EAGLE LINE

2315 U.S. Highway 11 S. Sweetwater, TN. 37874-5059

PHONE: (423) 337-2390

FAX: (423) 337-2338

EMAIL: sales@ab-eagleline.com WEBSITE: www.ab-eagleline.com



STANDARD LANDSCAPE BOX

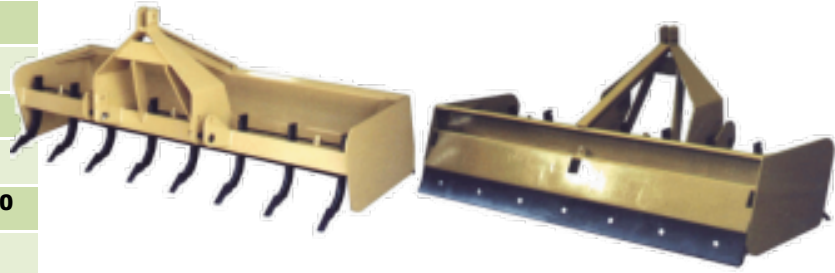
	BLS60	BLS65	BLS70	BLS80
Category	1 / 2	1 / 2	1 / 2	1 / 2
Width	72"	77"	84"	96"
No. Shanks	7	7	8	9
Weight (lbs.)	770	810	850	962
HP	35 - 70	35 - 70	35 - 70	35 - 70
Cutting Edges	3/8" x 6" Abrasion Resistant Steel, Interchangeable and Reversible			



- * ALL WELDED, NO ASSEMBLY REQUIRED * CAT. 1 / 2 COMBINATION HITCH * SCARIFIER SHANKS ARE ON 11" CENTERS * FRONT MOLDBOARD ROLL FORMED FOR ADDED STRENGTH AND IMPROVED SOIL FLOW * REAR MOLDBOARD IS DOUBLE FORMED FOR ADDED STRENGTH * SCARIFIER SHANKS ARE QUENCHED AND TEMPERED WITH 3 DEPTH SETTINGS**

FLOATING REAR MOLDBOARD LANDSCAPE BOX

	KBF60	KBF65	KBF70	KBF80
Category	1 / 2	1 / 2	1 / 2	1 / 2
Width	72"	77"	84"	96"
No. Shanks	7	7	8	9
Weight (lbs.)	881	926	973	1061
HP	35 - 70	35 - 70	35 - 70	35 - 70
Cutting Edges	3/8" x 6" Abrasion Resistant Steel, Interchangeable and Reversible			



*** ALL WELDED, NO ASSEMBLY REQUIRED * CAT. 1 / 2 COMBINATION HITCH * SCARIFIER SHANKS ARE ON 11" CENTERS * FRONT MOLDBOARD ROLL FORMED FOR ADDED STRENGTH AND IMPROVED SOIL FLOW * REAR MOLDBOARD IS DOUBLE FORMED FOR ADDED STRENGTH * SCARIFIER SHANKS ARE QUENCHED AND TEMPERED WITH 3 DEPTH SETTINGS**



A&B EQUIPMENT INC.
EAGLE LINE



2315 U.S. Highway 11 S. Sweetwater, TN. 37874-5059
 PHONE: (423) 337-2390 FAX: (423) 337-2338
 EMAIL: sales@ab-eagleline.com WEBSITE: www.ab-eagleline.com

HEAVY DUTY FLOATING REAR MOLDBOARD BOX

	KBSF60	KBSF65	KBSF70	KBSF80
Category	1 / 2	1 / 2	1 / 2	1 / 2
Width	72"	77"	84"	96"
No. Shanks	7	7	8	9
Weight (lbs.)	940	983	1043	1143
HP	50 - 70	50 - 70	50 - 70	50 - 70
Cutting Edges	3/8" x 6" Abrasion Resistant Steel, Interchangeable and Reversible			



*** ALL WELDED, NO ASSEMBLY REQUIRED * CAT. 1 / 2 COMBINATION HITCH * FLOATING OR LOCKED REAR MOLDBOARD * SCARIFIER SHANKS ARE ON 11" CENTERS * FRONT MOLDBOARD ROLL FORMED FOR ADDED STRENGTH AND IMPROVED SOIL FLOW * REAR MOLDBOARD IS DOUBLE FORMED FOR ADDED STRENGTH * SCARIFIER SHANKS ARE QUENCHED AND TEMPERED WITH 3 DEPTH SETTINGS**

CORRAL SCRAPER BOX



	BCS60	BCS70	BCS80
Category	1 / 2	1 / 2	1 / 2
Width	72"	84"	96"
Weight (lbs.)	660	700	740
HP	50 - 70	50 - 70	50 - 70
Struck Capacity	36 Cubic Feet	42 Cubic Feet	48 Cubic Feet
Cutting Edges	3/8" x 6" Abrasion Resistant Steel, Interchangeable and Reversible		
Optional	Rubber Cutting Edge		
Optional	Replaceable Skids		

*** ALL WELDED, NO ASSEMBLY REQUIRED * QUICK HITCH READY * HEAVY DUTY CLEVIS HITCH AND REPLACEABLE CAT. 1/ 2 PINS**



A&B EQUIPMENT INC.

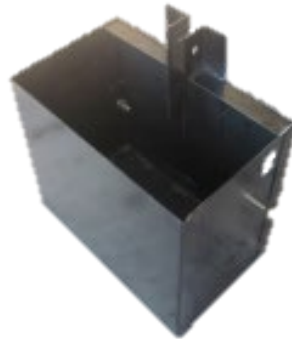
EAGLE LINE



2315 U.S. Highway 11 S. Sweetwater, TN. 37874-5059
 PHONE: (423) 337-2390 FAX: (423) 337-2338
 EMAIL: sales@ab-eagleline.com WEBSITE: www.ab-eagleline.com

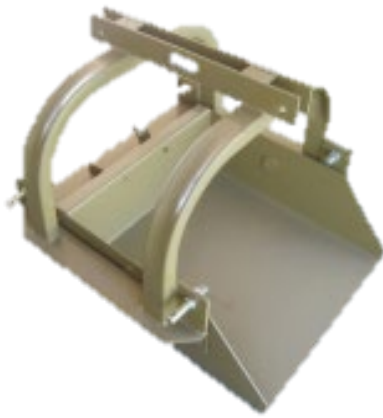
WEIGHT BOX

	BWO10
Category	1
Width	25"
Length	15"
Weight (lbs.)	103



*** ALL WELDED CONSTRUCTION * QUICK HITCH READY * ATTACH PINS AND READY TO USE**

SCOOP



	RSO50
Category	1
Width	28"
Depth	30"
Weight (lbs.)	216
HP	15 - 25
Capacity	5 Cubic Ft.

*** ASSEMBLED COMPLETE * ROPE CONTROLLED DUMPING AND AUTOMATIC RELATCHING FROM TRACTOR SEAT * REVERSIBLE – WORKS AS A SHOVEL * 3 POINT HITCH WITH 4 REPLACEABLE CAT. 1 LIFT ARM PINS**



A&B EQUIPMENT INC.

EAGLE LINE



2315 U.S. Highway 11 S. Sweetwater, TN. 37874-5059
 PHONE: (423) 337-2390 FAX: (423) 337-2338
 EMAIL: sales@ab-eagleline.com WEBSITE: www.ab-eagleline.com

GRADER BLADE - ECONOMY

	BGE40	BGE50	BGE60
Category	1	1	1
Width	48"	60"	72"
Weight (lbs.)	155	193	232
HP	15 - 25	15 - 25	15 - 25
Cutting Edges	3/8" x 6" Abrasion Resistant Steel, Interchangeable and Reversible		



*** QUICK HITCH READY * COMPACT HITCH * CAT. 1 WITH REPLACEABLE PINS * THREE ANGLE POSITIONS FRONT AND REAR * REINFORCED HITCH AND ROTATION ASSEMBLY * REPLACEABLE CAT. 1 LIFT ARM PINS**

GRADER – SLIDER – BLADE



	BGS40	BGS50	BGS60	BGS70	BGS80
Category	1	1	1	1	1
Width	48"	60"	72"	84"	96"
Weight (lbs.)	187	211	274	296	318
HP	15 - 25	15 - 25	25 - 40	25 - 40	25 - 40
A - Frame	5" x 3"	5" x 3"	6" x 3"	6" x 3"	6" x 3"
Pivot Bolt	1"	1"	1 1/4"	1 1/4"	1 1/4"
Cutting Edges	3/8" x 6" Abrasion Resistant Steel, Interchangeable and Reversible				

*** QUICK HITCH READY * COMES ASSEMBLED INSTALL A-FRAME AND READY TO USE * SLIDER STYLE ALLOWS BLADE TO OFFSET RIGHT OR LEFT UP TO 16" * REINFORCED BLADE ROTATION ASSEMBLY WITH 5 POSITIONS FORWARD & REVERSE * REPLACEABLE CAT. 1 LIFT ARM PINS**



A&B EQUIPMENT INC. EAGLE LINE



2315 U.S. Highway 11 S. Sweetwater, TN. 37874-5059
 PHONE: (423) 337-2390 FAX: (423) 337-2338
 EMAIL: sales@ab-eagleline.com WEBSITE: www.ab-eagleline.com

GRADER - DITCHER - SLIDER - BLADE

	BGD40	BGD50	BGD60	BGD70	BGD80
Category	1	1	1	1	1
Width	48"	60"	72"	84"	96"
Weight (lbs.)	201	223	282	305	328
HP	15 - 25	25 - 40	25 - 40	25 - 40	25 - 40
A - Frame	5" x 3"	5" x 3"	6" x 3"	6" x 3"	6" x 3"
Pivot Bolt	1"	1"	1 1/4"	1 1/4"	1 1/4"
Cutting Edges	3/8" x 6" Abrasion Resistant Steel, Interchangeable and Reversible				



- * QUICK HITCH READY * COMES ASSEMBLED INSTALL A-FRAME AND READY TO USE * 1/4" THICK MOLDBOARD DOUBLE FORMED FOR ADDED STRENGTH * DITCHING BLADE ROTATION ALLOWS ANGLING OF 15 AND 30 DEGREES * SLIDER STYLE ALLOWS BLADE TO OFFSET RIGHT OR LEFT UP TO 16" * REINFORCED BLADE ROTATION ASSEMBLY WITH 5 POSITIONS FORWARD AND REVERSE
- * REPLACEABLE CAT. 1 LIFT ARM PINS

GRADER – HYDRAULIC – BLADE



	BGH40	BGH50	BGH60	BGH70
Category	1	1	1	1
Width	48"	60"	72"	84"
Weight (lbs.)	218	232	248	276
HP	20 - 35	20 - 35	20 - 35	25 - 35
Pivot Bolt	1 1/4"	1 1/4"	1 1/4"	1 1/4"
Cutting Edges	3/8" x 6" Abrasion Resistant Steel, Interchangeable and Reversible			
Optional	Hose Kit with Pioneer Coupler			

- * QUICK HITCH READY * COMES ASSEMBLED INSTALL A-FRAME AND READY TO USE * HYDRAULIC CYLINDER INCLUDED * A-FRAME HITCH IS COMPACT CAT. 1 WITH REPLACEABLE LIFT ARM PINS
- * 1/4" THICK MOLDBOARD DOUBLE FORMED AND REINFORCED WITH TUBING FOR ADDED STRENGTH



A&B EQUIPMENT INC.

EAGLE LINE

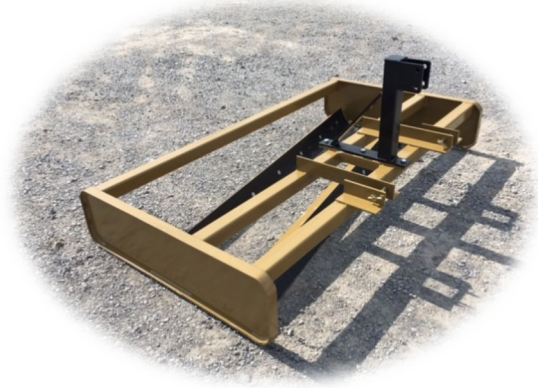


2315 U.S. Highway 11 S. Sweetwater, TN. 37874-5059
 PHONE: (423) 337-2390 FAX: (423) 337-2338
 EMAIL: sales@ab-eagleline.com WEBSITE: www.ab-eagleline.com

ROAD GRADER BLADE

BGR40
BGR50
BGR60
BGR70
BGR80
BGR90

Category	1	1	1	1	1	1
Width	48"	60"	72"	84"	96"	108"
Weight (lbs.)	413	486	520	594	679	764
HP	25	30	35	40	45	50
End Plate (Tall)	12"	12"	12"	12"	16"	16"
Cutting Edges	3/8" x 6" Abrasion Resistant Steel, Interchangeable and Reversible					
Optional	Category 1 / 2 Hitch					



*** COMES ASSEMBLED, INSTALL HITCH AND READY TO USE * QUICK HITCH READY * RECYCLES GRAVEL BY TURNING, MIXING, SIFTING, AND LEVELING WITH NO WASHBOARD EFFECT ON UNPAVED ROADS * DIGGING OF THE DUAL CUTTING EDGES CAUSES GRASS AND DEBRIS TO FLOW THROUGH EVENLY * DUAL CUTTING EDGES ARE ANGLED FOR CONSTANT DOWN PRESSURE RESULTING IN BETTER CUTTING AND LEVELING * REPLACEABLE CAT. 1 LIFT ARM PINS**

ROAD GRADER BLADE WITH SHANKS



	BGR401	BGR501	BGR601	BGR701	BGR801
Category	1	1	1	1	1
Width	48"	60"	72"	84"	96"
No. Shanks	4	4	6	6	6
Weight (lbs.)	444	525	567	649	742
HP	25	30	35	40	45
End Plate (Tall)	12"	12"	12"	12"	12"
Cutting Edges	3/8" x 6" Abrasion Resistant Steel, Interchangeable and Reversible				

*** COMES ASSEMBLED, INSTALL HITCH AND READY TO USE * QUICK HITCH READY * RECYCLES GRAVEL BY TURNING, MIXING, SIFTING, AND LEVELING WITH NO WASHBOARD EFFECT * DIGGING DUAL CUTTING EDGES CAUSES GRASS AND DEBRIS TO FLOW THROUGH EVENLY* DUAL CUTTING EDGES ARE ANGLED FOR CONSTANT DOWN PRESSURE * SCARIFIER SHANKS HAVE 3 DEPTH SETTINGS, AND REPLACEABLE POINTS * REPLACEABLE CAT. 1 LIFT ARM PINS**



A&B EQUIPMENT INC.

EAGLE LINE

2315 U.S. Highway 11 S. Sweetwater, TN. 37874-5059
 PHONE: (423) 337-2390 FAX: (423) 337-2338
 EMAIL: sales@ab-eagleline.com WEBSITE: www.ab-eagleline.com



BOOMPOLE

	BP-2
Category	1 - 2
Length	107"
Weight (lbs.)	101
Capacity (lbs.)	1500



*** COMES ASSEMBLED, READY TO USE * HEAVY DUTY * REPLACEABLE CAT. 1 - 2 LIFT ARM PINS**

TRAILER HITCH



	TH050	TH100	TH200
Category	0	1	2
Weight (lbs.)	55	59	62
2" Receiver	Yes	Yes	Yes
D - Ring	Yes	Yes	Yes
2 5/16" Ball	No	Yes	Yes

*** COMES ASSEMBLED, READY TO USE * REPLACEABLE LIFT ARM PINS * DRAWBAR AND BALL NOT INCLUDED**



A&B EQUIPMENT INC.

EAGLE LINE

2315 U.S. Highway 11 S. Sweetwater, TN. 37874-5059

PHONE: (423) 337-2390

FAX: (423) 337-2338

EMAIL: sales@ab-eagleline.com WEBSITE: www.ab-eagleline.com



UTILITY CARRIER 1500#

	UCCA1
Category	1
Useable Length	37 3/4"
Inside Width	24 3/4"
Weight (lbs.)	55
Capacity (lbs.)	1500



*** COMES ASSEMBLED, INSTALL LIFT ARM PINS, AND READY TO USE * ALL WELDED ANGLE FRAME CONSTRUCTION * ADD BOARDS AND USE AS AN ALL PURPOSE CARRIER * REPLACEABLE CAT. 1 LIFT ARM PINS**

UTILITY CARRIER 3000#



	UCCA2
Category	1
Useable Length	45"
Inside Width	25 1/2"
Weight (lbs.)	95
Capacity (lbs.)	3000

*** COMES ASSEMBLED, INSTALL LIFT ARM PINS, AND READY TO USE * USE FOR PALLETS AND PALLET BOXES * ALL WELDED HEAVY WALL TUBING CONSTRUCTION * TUBING IS FORMED FOR ADDED STRENGTH * FORKS SHAPED AND WELDED TO ELIMINATE GOUGING GROUND IN EITHER DIRECTION * REPLACEABLE CAT. 1 LIFT ARM PINS**



A&B EQUIPMENT INC.

EAGLE LINE

2315 U.S. Highway 11 S. Sweetwater, TN. 37874-5059

PHONE: (423) 337-2390

FAX: (423) 337-2338

EMAIL: sales@ab-eagleline.com WEBSITE: www.ab-eagleline.com



FRONT SPEAR: SINGLE

	FSO10
Forged Spear with Sleeve and Nut	Yes
Useable Length	42"
No. Main Spears	1
Weight (lbs.)	231
Capacity of Bales (lbs.)	1500



- * **INSTALL FORGED SPEAR AND READY TO USE * MAIN SPEAR HAS A 3500 LB. CAPACITY AT 23 1/2"**
- * **STABILIZING SPEARS ARE CUT ON ANGLE FOR EASIER PENETRATION * WORKS WITH SINGLE OR DOUBLE TILT CYLINDERS, OR THE 3 POINT HITCH**

FRONT SPEAR: DOUBLE



	FSO30
Spear with Sleeve and Nut	Yes
Useable Length	42"
No. Main Spears	2
Weight (lbs.)	303
Capacity of Bales (lbs.)	3000

- * **INSTALL FORGED SPEARS AND READY TO USE * MAIN SPEARS HAVE 3500 LB. CAPACITY AT 23 1/2"**
- * **STABILIZING SPEARS ARE CUT ON ANGLE FOR EASIER PENETRATION * WORKS WITH SINGLE OR DOUBLE TILT CYLINDERS, OR THE 3 POINT HITCH**



A&B EQUIPMENT INC.

EAGLE LINE

2315 U.S. Highway 11 S. Sweetwater, TN. 37874-5059

PHONE: (423) 337-2390

FAX: (423) 337-2338

EMAIL: sales@ab-eagleline.com WEBSITE: www.ab-eagleline.com



FRONT SPEAR: BUCKET – SINGLE

	FBS1
Spear with Sleeve and Nut	Yes
Useable Length	42"
No. Main Spears	1
Weight (lbs.)	122
Capacity of Bales (lbs.)	1500



*** INSTALL FORGED SPEAR AND READY TO USE * MAIN SPEAR HAS A 3500 LB. CAPACITY AT 23 1/2"**

*** STABILIZING SPEARS ARE CUT ON ANGLE FOR EASIER PENETRATION * SPEAR FRAME IS**

SECURELY HELD TO BUCKET WITH HEAVY DUTY WRAP AROUND CHAIN AND 1" TURNBUCKLE

FRONT SPEAR: EURO STYLE – SINGLE



	FSQ10
Spear with Sleeve and Nut	Yes
Useable Length	42"
No. Main Spears	1
Weight (lbs.)	151
Capacity of Bales (lbs.)	1500

*** INSTALL FORGED SPEAR AND READY TO USE * MAIN SPEAR HAS A 3500 LB. CAPACITY AT 23 1/2"**

*** STABILIZING SPEARS ARE CUT ON ANGLE FOR EASIER PENETRATION**



A&B EQUIPMENT INC.

EAGLE LINE

2315 U.S. Highway 11 S. Sweetwater, TN. 37874-5059

PHONE: (423) 337-2390

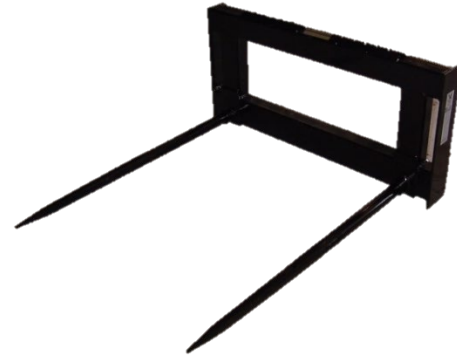
FAX: (423) 337-2338

EMAIL: sales@ab-eagleline.com WEBSITE: www.ab-eagleline.com



FRONT SPEAR: EURO STYLE – DOUBLE

	FSQ20
Spear with Sleeve and Nut	Yes
Useable Length	42"
No. Main Spears	2
Weight (lbs.)	179
Capacity of Bales (lbs.)	3000



*** INSTALL FORGED SPEARS AND READY TO USE * MAIN SPEARS HAVE 3500 LB. CAPACITY AT 23 1/2"**

*** STABILIZING SPEARS ARE CUT ON ANGLE FOR EASIER PENETRATION**

FRONT SPEAR: SKIDSTEER STYLE



	FSF40
Spear with Sleeve and Nut	Yes
Useable Length	42"
No. Main Spears	1
Weight (lbs.)	202
Capacity of Bales (lbs.)	1500

*** INSTALL FORGED SPEARS AND READY TO USE * MAIN SPEARS HAVE 3500 LB. CAPACITY AT 23 1/2"**

*** STABILIZING SPEARS ARE CUT ON ANGLE FOR EASIER PENETRATION * FRAME IS MADE FROM**

HEAVY WALL HIGH STRENGTH TUBING * ANTI-SKID FLOOR PLATE ON TOP FOR STEP



A&B EQUIPMENT INC.

EAGLE LINE

2315 U.S. Highway 11 S. Sweetwater, TN. 37874-5059

PHONE: (423) 337-2390

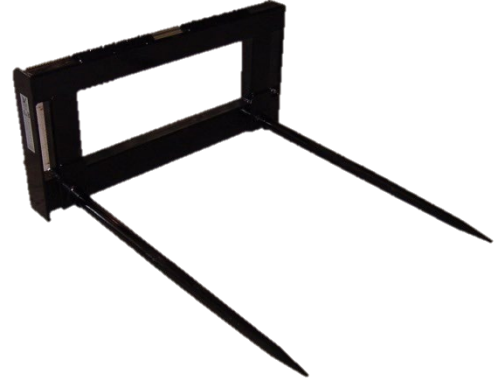
FAX: (423) 337-2338

EMAIL: sales@ab-eagleline.com WEBSITE: www.ab-eagleline.com



FRONT SPEAR: SKIDSTEER STYLE - DOUBLE

	FSF44
Spear with Sleeve and Nut	Yes
Useable Length	42"
No. Main Spears	2
Weight (lbs.)	251
Capacity of Bales (lbs.)	3000



* INSTALL FORGED SPEARS AND READY TO USE * MAIN SPEARS HAVE 3500 LB. CAPACITY AT 23 1/2"

* FRAME IS MADE FROM HEAVY WALL HIGH STRENGTH TUBING * ANTI-SKID FLOOR PLATE ON TOP

FOR STEP

FRONT SPEAR: SKIDSTEER STYLE - TRIPLE

	FSF30
Spear with Sleeve and Nut	Yes
Useable Length	42"
No. Main Spears	3
Weight (lbs.)	297
Capacity of Bales (lbs.)	3000



* INSTALL FORGED SPEARS AND READY TO USE * MAIN SPEARS HAVE 3500 LB. CAPACITY AT 23 1/2"

* FRAME IS MADE FROM HEAVY WALL HIGH STRENGTH TUBING * ANTI-SKID FLOOR PLATE ON TOP

FOR STEP



A&B EQUIPMENT INC.

EAGLE LINE

2315 U.S. Highway 11 S. Sweetwater, TN. 37874-5059

PHONE: (423) 337-2390

FAX: (423) 337-2338

EMAIL: sales@ab-eagleline.com WEBSITE: www.ab-eagleline.com



FRONT SPEAR: J D STYLE

	FSJD70
Spear with Sleeve and Nut	Yes
Useable Length	42"
No. Main Spears	1
Weight (lbs.)	151
Capacity of Bales (lbs.)	1500



* INSTALL FORGED SPEARS AND READY TO USE * MAIN SPEARS HAVE 3500 LB. CAPACITY AT 23 1/2"

* STABILIZING SPEARS ARE CUT ON ANGLE FOR EASIER PENETRATION * FRAME IS MADE FROM

HEAVY WALL HIGH STRENGTH TUBING * ANTI-SKID FLOOR PLATE ON TOP FOR STEP

REAR SPEAR



	RSO10	RSO20
Category	1	2
Spear with Sleeve and Nut	Yes	Yes
Useable Length	42"	42"
No. Main Spears	1	1
Weight (lbs.)	84	90
Capacity of Bales (lbs.)	1500	1500

* INSTALL FORGED SPEARS AND READY TO USE * MAIN SPEARS HAVE 3500 LB. CAPACITY AT 23 1/2"

* STABILIZING SPEARS ARE CUT ON ANGLE FOR EASIER PENETRATION * REPLACEABLE CAT. 1 OR 2

LIFT ARM PINS



A&B EQUIPMENT INC.

EAGLE LINE

2315 U.S. Highway 11 S. Sweetwater, TN. 37874-5059

PHONE: (423) 337-2390 FAX: (423) 337-2338

EMAIL: sales@ab-eagleline.com WEBSITE: www.ab-eagleline.com



HIJACKER

	HIS60
Category	1
Weight (lbs.)	145
Capacity of Bales (lbs.)	1500



- * INCREASES TRACTOR LIFT MORE THAN 3 FEET * NEEDS TOP LINK OR HYDRAULIC CYLINDER INSTALLED FOR PROPER OPERATION * MADE FROM HEAVY WALL HIGH STRENGTH TUBING
- * REPLACEABLE CAT. 1 LIFT ARM PINS * REAR SPEAR (RSO10) SOLD SEPARATELY

PALLET FORKS



	PF300	PF300W	PF500	PF700
Style	Skidsteer	Skidsteer Walk Thru	Euro	J D
Useable Length of Forks	48"	48"	48"	48"
Safety Guard	Welded	Welded	Welded	Welded
Weight (lbs.)	404	404	404	404
Capacity (lbs.)	4400	4400	4400	4400

- * INSTALL FORKS AND READY TO USE * FORKS SLIDE AND LOCK IN 3" INCREMENTS * FRAME IS REINFORCED HEAVY ANGLE * 3/8" THICK SIDE PLATES * FORKS ARE 1 3/8" THICK X 4 1/4" WIDE



A&B EQUIPMENT INC.

EAGLE LINE

2315 U.S. Highway 11 S. Sweetwater, TN. 37874-5059

PHONE: (423) 337-2390

FAX: (423) 337-2338

EMAIL: sales@ab-eagleline.com WEBSITE: www.ab-eagleline.com



REAR HAY FORKS



	RHF15	RHF30
Category	1	1 & 2
Weight (lbs.)	150	190
Capacity of Bales (lbs.)	1500	3000

RHF15

RHF30

*** INSTALL STABILIZER SPIKE AND LIFT ARM PINS, READY TO USE * FRAMES ARE MADE FROM HEAVY WALL HIGH STRENGTH TUBING * STABILIZER SPIKE IS CUT ON ANGLE FOR EASIER PENETRATION * REPLACEABLE LIFT ARM PINS**

WAGON – RUNNING GEAR

	RG-8TLW
Hitch	Pull Type
Adjustable Base	85" - 124"
Tread Stance	72"
King Pin	1" Solid Steel
Capacity (lbs.)	16,000
Weight (lbs.)	527



Optional
Optional

Wheels & Tires
Wood Deck

- * Fifth Wheel Type * 15" Square, 3/8" Fifth Wheel Plate * Less Tires & Wheels * 20" Axle Clearance
- * Bolster Stakes Adjustable from 40" – 48" * Rugged Weld Rear Hitch



A&B EQUIPMENT INC.

EAGLE LINE



2315 U.S. Highway 11 S. Sweetwater, TN. 37874-5059
 PHONE: (423) 337-2390 FAX: (423) 337-2338
 EMAIL: sales@ab-eagleline.com WEBSITE: www.ab-eagleline.com

LANDSCAPE RAKE – ECONOMY

	RLE40	RLE50	RLE60	RLE70	RLE80
Category	1	1	1	1	1
Width	48"	60"	72"	84"	96"
No. Tines	24	30	36	42	48
Weight (lbs.)	139	173	208	229	249
HP	15 - 25	15 - 25	25 - 40	25 - 40	25 - 40
Pivot Bolt	1"	1"	1"	1"	1"
Positions Forward & Reverse	3	3	3	3	3

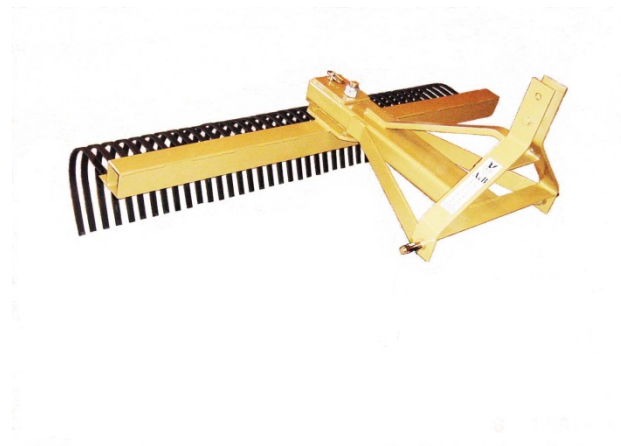


- * COMES ASSEMBLED, ADD A-FRAME AND READY TO USE * QUICK HITCH READY * TEETH ARE HEAT TREATED SPRING STEEL * LOCKING CLAMP TO PREVENT SIDE MOVEMENT OF RAKE TEETH * ALL BOLTS HAVE STEEL LOCK NUTS TO REDUCE LOOSENING FROM VIBRATION * COMPACT 3 POINT HITCH A-FRAME AND REPLACEABLE CAT. 1 LIFT ARM PINS

LANDSCAPE RAKE

	RLO40	RLO50	RLH60	RLH70	RLH80
--	-------	-------	-------	-------	-------

Category	1	1	1	1	1
Width	48"	60"	72"	84"	96"
No. Tines	24	30	36	42	48
Weight (lbs.)	180	200	245	276	316
HP	15 - 25	15 - 25	25 - 40	25 - 40	25 - 40
Pivot Bolt	1"	1"	1 1/4"	1 1/4"	1 1/4"
Positions Forward & Reverse	3	3	5	5	5
Optional	RGWPR - Gauge Wheels				



*** COMES ASSEMBLED, ADD A-FRAME AND READY TO USE * QUICK HITCH READY * TEETH ARE HEAT TREATED SPRING STEEL * LOCKING CLAMP TO PREVENT SIDE MOVEMENT OF RAKE TEETH * ALL BOLTS HAVE STEEL LOCK NUTS TO REDUCE LOOSENING FROM VIBRATION * 3 POINT HITCH A-FRAME AND REPLACEABLE LIFT ARM PINS**



A&B EQUIPMENT INC.

EAGLE LINE



2315 U.S. Highway 11 S. Sweetwater, TN. 37874-5059
 PHONE: (423) 337-2390 FAX: (423) 337-2338
 EMAIL: sales@ab-eagleline.com WEBSITE: www.ab-eagleline.com

PULVERIZER

Single Roller	P400SR	P500SR	P600SR	P700SR
Category	1	1	1	1
Width	48"	60"	72"	84"
No. Spikes	21	26	31	36
Weight (lbs.)	441	551	624	704
Double Roller	P400DR	P500DR	P600DR	P700DR
Category	1	1	1	1
Width	48"	60"	72"	84"
No. Spikes	21	26	31	36
Weight (lbs.)	542	678	767	861



*** COMES ASSEMBLED, READY TO USE * QUICK HITCH READY * ALL WELDED FRAME IS HEAVY DUTY 10" X 10" WIDE FLANGE BEAM * ROLLER ROTATES ON A 1" SHAFT ON FLANGED REGREASABLE PILLOW BLOCK BEARINGS * SPRING LOADED ROLLER HAS 1 3/8" LONG PINS WELDED TO A 6" TUBE * 3 POINT CLEVIS TYPE HITCH WITH CAT. 1 REPLACEABLE LIFT ARM PINS**

ROLLER

	R300	R400	R500	R600	R700
Category	1	1	1	1	1
Width	36"	48"	60"	72"	84"
Empty Weight (lbs.)	174	232	290	348	406
Full Weight (lbs.)	300	400	500	600	700
Optional	APWK01 Gauge Wheel Kit				



- * COMES ASSEMBLED, INSTALL HITCH, AND READY TO USE * QUICK HITCH READY * PULL TYPE HITCH INCLUDED * CAN BE FILLED WITH WATER * HAS 2 DRAIN PLUGS TO EMPTY WATER FASTER
- * COMES WITH STAND



A&B EQUIPMENT INC. EAGLE LINE



2315 U.S. Highway 11 S. Sweetwater, TN. 37874-5059
 PHONE: (423) 337-2390 FAX: (423) 337-2338
 EMAIL: sales@ab-eagleline.com WEBSITE: www.ab-eagleline.com

AERATOR

	AL330	AL340	AL350	AL360	AL370
Category	1	1	1	1	1
Width	36"	48"	60"	72"	84"
Empty Weight (lbs.)	237	316	395	474	553
Full Weight (lbs.)	363	484	605	726	847
Optional	APWK01 Gauge Wheel Kit				



- * COMES ASSEMBLED, INSTALL HITCH, AND READY TO USE * QUICK HITCH READY * PULL TYPE

HITCH INCLUDED * CAN BE FILLED WITH WATER * HAS 2 DRAIN PLUGS TO EMPTY WATER FASTER

*** COMES WITH STAND**

AERATOR – PLUGGER



	APL330	APL340	APL350	APL360	APL370
Category	1	1	1	1	1
Width	36"	48"	60"	72"	84"
Empty Weight (lbs.)	262	349	436	523	611
Full Weight (lbs.)	388	517	646	775	905
Optional	APWK01 Gauge Wheel Kit				

*** COMES ASSEMBLED, INSTALL HITCH, AND READY TO USE * QUICK HITCH READY * PULL TYPE**

HITCH INCLUDED * CAN BE FILLED WITH WATER * HAS 2 DRAIN PLUGS TO EMPTY WATER FASTER

*** COMES WITH STAND**



A&B EQUIPMENT INC.

EAGLE LINE

2315 U.S. Highway 11 S. Sweetwater, TN. 37874-5059

PHONE: (423) 337-2390

FAX: (423) 337-2338

EMAIL: sales@ab-eagleline.com WEBSITE: www.ab-eagleline.com



PASTURE RENOVATOR

	PR666	PR778
Category	1	1
Width	66"	78"
No. Shanks	6	7
Weight (lbs.)	180	210
HP	25 - 40	25 - 40



*** COMES ASSEMBLED, INSTALL SHANKS, AND READY TO USE * RAKES ROOTS AND BRANCHES**

*** REVERSE SHANKS AND USE TO PILE BRUSH * SCARIFIER SHANKS HAVE 3 DEPTH SETTINGS AND**

ONE ROW CULTIVATOR



	RC650
Category	1
Width	50"
No. Shanks	6
Shank Locks	Yes
Weight (lbs.)	136
HP	15 - 25

- * COMES ASSEMBLED, INSTALL SHANKS, AND READY TO USE * SHANKS HAVE 3 MOUNTING POSITIONS ON FRAME TO ADJUST ROW SPACING * SHANK LOCKS KEEP SHANKS ALIGNED AS SET
- * 2 1/2" REVERSIBLE POINTS * CAN MOUNT A ONE ROW COVINGTON OR COLE PLANTER TO UNIT
- * HIGH CLEARANCE * ALL WELDED FRAME * REPLACEABLE CAT. 1 LIFT ARM PINS



A&B EQUIPMENT INC.

EAGLE LINE

2315 U.S. Highway 11 S. Sweetwater, TN. 37874-5059

PHONE: (423) 337-2390

FAX: (423) 337-2338

EMAIL: sales@ab-eagleline.com WEBSITE: www.ab-eagleline.com



SUBSOILER

	SS003
Category	1
No. Shanks	1
Weight (lbs.)	138
HP	20 - 35
Optional	15" Middlebuster Shovel



- * COMES ASSEMBLED AND READY TO USE * 3" WIDE REVERSIBLE POINT * HEAVY DUTY SHANK
- * SHEAR BOLT PROTECTION ON TOP LINK * 3 POINT HITCH WITH REPLACEABLE LIFT ARM PINS

MIDDLEBUSTER



	MBO15
Category	1
No. Shovels	1
Weight (lbs.)	74
HP	20 - 30

- * COMES ASSEMBLED READY TO USE * 15" WIDE SHOVEL * HEAVY DUTY SHANK * ALL WELDED HEAVY DUTY FRAME * 3 POINT HITCH WITH REPLACEABLE CAT. 1 LIFT ARM PINS



A&B EQUIPMENT INC.

EAGLE LINE

2315 U.S. Highway 11 S. Sweetwater, TN. 37874-5059

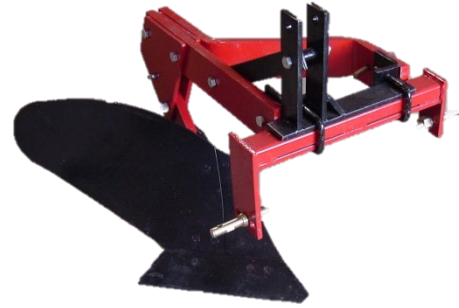
PHONE: (423) 337-2390 FAX: (423) 337-2338

EMAIL: sales@ab-eagleline.com WEBSITE: www.ab-eagleline.com



ONE BOTTOM PLOW - COMPACT

	1BP12CT
Category	1
Bottom	12"
Width of Cut	Adjustable
Shear Bolt	Yes
HP	15 - 25
Weight (lbs.)	217
Optional	1BPGW - Gauge Wheel with Ball Bearings



*** COMES ASSEMBLED, INSTALL A-FRAME AND READY TO USE * AVAILABLE WITH 12" BOTTOM ONLY**
*** 5/8" X 4" FRAME MEMBERS * 5/8" X 3" VERTICAL BEAMS * 3/8" X 2 1/2" WELDED A-FRAME**
ASSEMBLY * REPLACEABLE SHIN, SHARE, AND MOLDBOARD * 3 POINT HITCH WITH REPLACEABLE
CAT. 1 LIFT ARM PINS

ONE BOTTOM PLOW



	1BP12	1BP14	1BP16
Category	1	1	1
Bottom	12"	14"	16"
Width of Cut	Adjustable	Adjustable	Adjustable
Shear Bolt	Yes	Yes	Yes
HP	15 - 30	15 - 30	15 - 30
Weight (lbs.)	256	256	262
Optional	1BPCL - Coulter		
Optional	1BPGW - Gauge Wheels with Ball Bearings		

*** COMES ASSEMBLED, INSTALL A-FRAME AND READY TO USE * 1" X 4" FRAME MEMBERS * 1" X 3"**
VERTICAL BEAMS * 1/2" X 2 1/2" A-FRAME * REPLACEABLE SHIN, SHARE, AND MOLDBOARD
*** 3 POINT HITCH WITH REPLACEABLE CAT. 1 LIFT ARM PINS**



A&B EQUIPMENT INC.
EAGLE LINE



2315 U.S. Highway 11 S. Sweetwater, TN. 37874-5059
 PHONE: (423) 337-2390 FAX: (423) 337-2338
 EMAIL: sales@ab-eagleline.com WEBSITE: www.ab-eagleline.com

TWO BOTTOM PLOW

	2BP12	2BP14	2BP16
Category	1	1	1
Bottom	12"	14"	16"
Width of Cut	Adjustable	Adjustable	Adjustable
Shear Bolt	Yes	Yes	Yes
HP	25 - 40	25 - 40	25 - 40
Weight (lbs.)	411	411	423
Optional	1BPCL - Coulters		
Optional	1BPGW - Gauge Wheel with Ball Bearings		



- * COMES ASSEMBLED, INSTALL A-FRAME AND READY TO USE * 1" X 4" FRAME MEMBERS * 1" X 3" VERTICAL BEAMS * 1/2" X 2 1/2" A-FRAME * REPLACEABLE SHIN, SHARE, AND MOLDBOARD
- * 3 POINT HITCH WITH REPLACEABLE CAT. 1 LIFT ARM PINS

THREE BOTTOM PLOW



	3BP14	3BP16
Category	2	2
Bottom	14"	16"
Width of Cut	Adjustable	Adjustable
Shear Bolt	Yes	Yes
HP	35 - 50	35 - 50
Weight (lbs.)	695	713
Optional	1BPCL - Coulters	
Optional	1BPGW - Gauge Wheel with Ball Bearings	

- * COMES ASSEMBLED, INSTALL A-FRAME AND READY TO USE * 1" X 4" FRAME MEMBERS * 1" X 3" VERTICAL BEAMS * 1/2" X 2 1/2" A-FRAME * REPLACEABLE SHIN, SHARE, AND MOLDBOARD
- * 3 POINT HITCH WITH REPLACEABLE CAT. 1 LIFT ARM PINS



A&B EQUIPMENT INC.

EAGLE LINE

2315 U.S. Highway 11 S. Sweetwater, TN. 37874-5059

PHONE: (423) 337-2390

FAX: (423) 337-2338

EMAIL: sales@ab-eagleline.com WEBSITE: www.ab-eagleline.com



GARDEN HARROW

	GH121477CT	GH121677	GH161677
Category	1 Compact	1	1
No. of Discs	12	12	16
Size of Disc Blades	14"	16"	16"
Gang Spacing on All Gangs	7 1/2"	7 1/2"	7 1/2"
Width of Cut	4'4"	4'4"	5'5"
HP	13 - 20	13 - 20	20- 25
Weight (lbs.)	258	320	360



*** COMES ASSEMBLED, INSTALL A-FRAME AND READY TO USE * AVAILABLE WITH COMPACT OR STANDARD HITCH * DISC GANGS ARE ADJUSTABLE * TRIPLE SEALED SELF-ALIGNING BALL BEARINGS * COMPACT STYLE IS ONLY AVAILABLE WITH 14" CUT-OUT DISC BLADES * AVAILABLE WITH 16" PLAIN, CUT-OUT, OR COMBINATION DISC BLADES**

EAGLE HARROW



	EH121877	EH161877	EH201877	EH241877
Category	1	1	1	1
No. of Discs	12	16	20	24
Size of Disc Blades	16" or 18"	16" or 18"	16" or 18"	16" or 18"
Gang Spacing on All Gangs	7 1/2"	7 1/2"	7 1/2"	7 1/2"
Width of Cut	4'4"	5'5"	6'6"	7'7"
HP	25 - 30	30 - 25	35 - 40	40 - 45
Weight (lbs.)	530	591	660	740
Optional: Disc Scrapers	LTS12	LTS16	LTS20	LTS24

*** COMES ASSEMBLED, INSTALL A-FRAME AND READY TO USE * QUICK HITCH READY * SINGLE PIN ADJUSTS FRONT OR REAR GANGS * GANGS HAVE TRIPLE SEALED BALL BEARINGS AND CAST IRON BUMPER WASHERS AND SPACERS * WELDED 3 POINT HITCH AND REPLACEABLE CAT. 1 LIFT ARM PINS * AVAILABLE WITH 16" OR 18" PLAIN, CUT-OUT OR COMBINATION BLADES**



A&B EQUIPMENT INC.

EAGLE LINE

2315 U.S. Highway 11 S. Sweetwater, TN. 37874-5059

PHONE: (423) 337-2390

FAX: (423) 337-2338

EMAIL: sales@ab-eagleline.com WEBSITE: www.ab-eagleline.com



FIELD HARROW

	FH201877	FH241877	FH161899	FH201899	FH181897	FH221897
Category	1	1	1	1	1	1
No. of Disc Blades	20	24	16	20	18	22
Disc Blade Size	18" or 20"					
Style Disc Blade	All Plain, All Cut-Out, or Cut-Out Front and Plain Rear					
Axle Size	1" Square with Upset Head					
Bearings	Triple Sealed Ball Bearings					
Disc Blade Spacing	7 ½"	7 ½"	9"	9"	9" Front and 7 ½" Rear	
Width of Cut	6'6"	7'7"	5'5"	7'4"	6'6"	7'7"
HP	30 - 40	40 - 45	30 - 35	30 - 40	30 - 40	40 - 45
Weight (lbs.)	791	892	743	827	767	859
Optional: Disc Scrapers	LTS20	LTS24	LTS16	LTS20	LTS18	LTS22



*** COMES ASSEMBLED, INSTALL A-FRAME AND READY TO USE * QUICK HITCH READY * REMOVE 2 BOLTS TO ADJUST FRONT OR REAR GANGS * GANGS HAVE TRIPLE SEALED BALL BEARINGS AND CAST IRON BUMPER WASHERS AND SPACERS * 3" X 3" WELDED TUBE FRAME * THE HITCH IS WELDED AND HAS REPLACEABLE CAT. 1 LIFT ARM PINS * AVAILABLE WITH 18" OR 20" PLAIN, CUT-OUT OR COMBINATION BLADES**



A&B EQUIPMENT INC.

EAGLE LINE

2315 U.S. Highway 11 S. Sweetwater, TN. 37874-5059

PHONE: (423) 337-2390

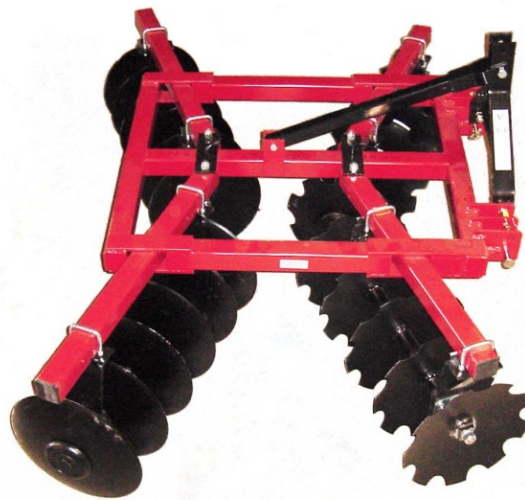
FAX: (423) 337-2338

EMAIL: sales@ab-eagleline.com WEBSITE: www.ab-eagleline.com



HEAVY FIELD HARROW

	HFH161877	HFH201877	HFH241877	HFH161899	HFH201899	HFH181897	HFH221897
Category	1	1	1	1	1	1	1
No. of Disc Blades	16	20	24	16	20	18	22
Disc Blade Size	18" or 20"						
Style Disc Blade	All Plain, All Cut-Out, or Cut-Out Front and Plain Rear						
Axle Size	1" Square with Upset Head						
Bearings	Triple Sealed Ball Bearings						
Disc Blade Spacing	7 1/2"	7 1/2"	7 1/2"	9"	9"	9" Front and 7 1/2" Rear	
Width of Cut	5'5"	6'6"	7'7"	5'5"	7'4"	6'6"	7'7"
HP	30 - 35	30 - 40	40 - 45	30 - 35	30 - 40	30 - 40	40 - 45
Weight (lbs.)	794	867	940	807	895	840	918
Optional: Disc Scrapers	LTS16	LTS20	LTS24	LTS16	LTS20	LTS18	LTS22



*** COMES ASSEMBLED, INSTALL A-FRAME AND READY TO USE * QUICK HITCH READY * SINGLE PIN ADJUSTS FRONT OR REAR GANGS * GANGS HAVE TRIPLE SEALED BALL BEARINGS AND CAST IRON BUMPER WASHERS AND SPACERS * 3" X 3" WELDED TUBE FRAME * THE HITCH IS WELDED AND HAS REPLACEABLE CAT. 1 LIFT ARM PINS * AVAILABLE WITH 18" OR 20" PLAIN, CUT-OUT OR COMBINATION BLADES**



A&B EQUIPMENT INC.

EAGLE LINE

2315 U.S. Highway 11 S. Sweetwater, TN. 37874-5059

PHONE: (423) 337-2390

FAX: (423) 337-2338

EMAIL: sales@ab-eagleline.com WEBSITE: www.ab-eagleline.com



SCREW CRANK HARROW

	SCH201877	SCH241877	SCH161899	SCH201899	SCH181897	SCH221897
Category	1	1	1	1	1	1
No. of Disc Blades	20	24	16	20	18	22
Disc Blade Size and Style	18" or 20" All Plain, All Cut-Out or Cut-Out Front and Plain Rear					
Axle Size	1" Square with Upset Head					
Bearings	Triple Sealed Ball Bearings					
Disc Blade Spacing	7 1/2"	7 1/2"	9"	9"	9" Front and 7 1/2" Rear	
Width of Cut	6'6"	7'7"	5'5"	7'4"	6'6"	7'7"
HP	30 - 40	40 - 45	30 - 35	30 - 40	30 - 40	40 - 45
Weight (lbs.)	878	945	824	904	854	925
Optional: Disc Scrapers	LTS20	LTS24	LTS16	LTS20	LTS18	LTS22



*** COMES ASSEMBLED, INSTALL A-FRAME AND READY TO USE * HEAVY DUTY BUSH & BOG OR A FLEXIBLE TANDEM HARROW * ONE SCREW CRANK ADJUSTS FRONT OR REAR GANGS * GANGS HAVE TRIPLE SEALED BALL BEARINGS AND CAST IRON BUMPER WASHERS AND SPACERS * 3" X 3" WELDED TUBE FRAME * THE HITCH IS WELDED AND HAS REPLACEABLE CAT. 1 LIFT ARM PINS**



A&B EQUIPMENT INC.

EAGLE LINE

2315 U.S. Highway 11 S. Sweetwater, TN. 37874-5059

PHONE: (423) 337-2390

FAX: (423) 337-2338

EMAIL: sales@ab-eagleline.com WEBSITE: www.ab-eagleline.com



FLEXIBLE HITCH HARROW

	FHH242088	FHH282088	FHH322088	FHH202099	FHH242099	FHH282099
Category	2	2	2	2	2	2
No. of Disc Blades	24	28	32	20	24	28
Disc Blade Size and Style	20" OR 22" All Plain, All Cut-out, or Cut-Out Front and Plain Rear					
Axle Size	1 1/8" Square – High Carbon					
Bearings	Regreaseable Self-Aligning Ball Bearings					
Disc Blade Spacing	8"	8"	8"	9"	9"	9"
Width of Cut	8'8"	10'0"	11'4"	8'2"	9'8"	11'3"
HP	30 - 40	40 - 45	30 - 35	30 - 40	30 - 40	40 - 45
Weight (lbs.)	1249	1372	1496	1217	1403	1589
Optional: Disc Scrapers	WHS24	WHS28	WHS32	WHS20	WHS24	WHS28



*** INSTALL DISC GANGS & A-FRAME, THEN READY TO USE * FLEXIBLE HITCH ALLOWS HARROW TO FLOAT ON UNEVEN TERRAIN * SINGLE PIN ADJUSTS FRONT OR REAR GANGS * GANGS ANGLE UP TO 18 DEGREES * HEAVY CAST IRON SPACERS AND BUMPER WASHERS * FRAME IS MADE FROM 1/2" ANGLE, AND HEAVY SQUARE TUBING * 3 POINT HITCH IS WELDED WITH REPLACEABLE CAT. 2 LIFT ARM PINS**