

HYDRAULIC MULCHERS

For excavators from
1.5 to 35 Ton.



For skid steers and
loaders from 20 to 120 HP.



INDEX

Excavator Mulch Heads.....	3
Green/SB.....	3
NKR/SB	4
GKR/SB.....	5
CKT/SB.....	6
PARK/SB	7
RA/SB.....	8
CKT/FX.....	9
PARK/FM.....	10
PARK/FX.....	11
LAND/SB.....	12
TFX/SB.....	14
EFXMD/SB.....	15
EXF/SB.....	16
Skid Steer Mulchers	17
MINI/SSL.....	17
AF/SSL.....	18
KX/SSL.....	19
MX/SSL	20

GREEN/SB



1,5-2 tons

Ø 0,8"



STRENX®
HARDOX®



The drain line is **recommended**

Hydraulic mulching head for mini-excavators of 1.5-2 tons, suited for mulching grass and small bushes up to 0.8".

STANDARD EQUIPMENTS



Hydraulic gear motor with integrated hydr. valves block.



Self-levelling support with under plate for mount hitch.



Protective cover for motor



Side skids with wear undershoes



Berti "G" Hammer flail

OPTIONAL:

- Mount hitch & pins, made to measure

MOD.												
	A	B	C								Lbs	
	in	in	in	in	n°	n°	gpm	psi	rotor rpm	Lbs	min	max
GREEN/SB 60	36	24	20	24	10	20	7-9	2400-3000	2200-2550	44	220	270
GREEN/SB 80	44	24	20	31	14	28	7-9	2400-3000	2200-2550	44	240	290

NKR/SB



2-4 tons



1.2"



STRENX®

The drain line is **recommended**

Hydraulic mulching head for mini-excavators of 2-4 tons, suited for mulching grass and small bushes up to 1.2" .

STANDARD EQUIPMENTS



Hydraulic gear motor with integrated hydr. valves block.



Self-levelling support with under plate for mount hitch.



Protective cover for motor



Side skids with wear undershoes



Berti "Y" blades

OPTIONAL:

- Mount hitch & pins, made to measure

MOD.											
	A	B	C							in	n°
NKR/SB 60	36	30	24	22	20	8-10	2400-3000	2350-2550	55	330	385
NKR/SB 80	43	30	24	30	28	8-10	2400-3000	2350-2550	55	375	430
NKR/SB 100	51	30	24	38	36	8-10	2400-3000	2350-2550	55	420	475

GKR/SB



2,5-4 tons

Ø 1.6"



STRENX®



The drain line is **recommended**

Hydraulic mulching head for mini-excavators of 2.5-4 tons, suited for mulching grass and small bushes up to 1.6".

STANDARD EQUIPMENTS



Hydraulic gear motor with integrated hydr. valves block.



Self-levelling support with under plate for mount hitch.



Protective cover for motor



Side skids with wear undershoes



Berti "B" hammer-flail

OPTIONAL:

- Mount hitch & pins, made to measure

MOD.											
	A	B	C							Lbs	
	in	in	in	in	n°	gpm	psi	rotor rpm	Lbs	min	max
GKR/SB 60	36	30	24	22	8	8-10	2400-3000	2350-2550	55	400	470
GKR/SB 80	44	30	24	30	12	10-12	2400-3000	2350-2550	55	470	530

CKT/SB



4,5-5,5 tons

Ø 2"



STRENX®



The drain line is **recommended**

Hydraulic mulching head for mini-excavators of 4.5-5.5 tons, suited for mulching grass and bushes up to 2".

STANDARD EQUIPMENTS



Hydraulic gear motor



Self-levelling support with under plate for mount hitch.



Hydr. valves block, "Berti Fluid Box"



Side skids with wear undershoes



Belts transmission (2x) and protective cover for motor



Berti "B" hammer-flail

OPTIONAL:

- Mount hitch & pins, made to measure

MOD.											Lbs	
	A	B	C								min	max
	in	in	in	in	n°	n°	gpm	psi	rotor rpm	Lbs		
CKT/SB 80	38	38	25	30	12	36	11-13	2400-3000	2200-2370	55	570	630
CKT/SB 100	45	38	25	36	16	48	11-13	2400-3000	2200-2370	55	640	700

PARK/SB



6-8 tons



2.5"



STRENX®



The drain line is **recommended**

Hydraulic mulching head for excavators of 6-8 tons, suited for mulching grass, canes and bushes up to 2.5".

STANDARD EQUIPMENTS



Hydraulic gear motor



Self-levelling support with under plate for mount hitch.



Hydr. valves block, "Berti Fluid Box"



Side skids with wear undershoes



Belts transmission (2x) and protective cover for motor



Berti "D" hammer-flail

OPTIONAL:

- Mount hitch & pins, made to measure

MOD.											Lbs	
	A	B	C								in	n°
PARK/SB 90	42	36	36	35	12	36	16-18	3100-3300	2200-2470	110	900	1050
PARK/SB 110	50	36	36	40	16	48	16-18	3100-3300	2200-2470	110	1000	1140

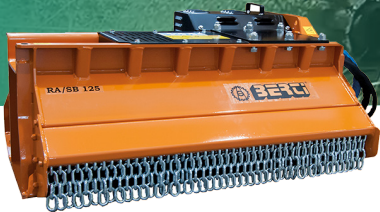
RA/SB



7.5-9 tons



2.8"



STRENX®



The drain line is **recommended**

Hydraulic mulching head for excavators of 7.5-9 tons, suited for mulching grass, canes and bushes up to 2.8".

STANDARD EQUIPMENTS



Hydraulic gear motor



Under plate for mount hitch.



Hydr. valves block, "Berti Fluid Box"



Side skirts with wear undershoes



Belts transmission (3x) and protective cover for motor



Berti "A" hammer-flail

OPTIONAL:

- Mount hitch & pins, made to measure
- Self-levelling support with under plate for mount hitch.

MOD.												
	A	B	C								in	n°
RA/SB 95	45	37	27	35	8	24	20-22	3100-3300	2350-2550	110	890	1150
RA/SB 115	53	37	27	35	10	30	20-22	3100-3300	2350-2550	110	990	1250
RA/SB 125	57	37	27	35	12	36	20-22	3100-3300	2350-2550	110	1050	1300

CKT/FX



7.5-9 tons

Ø 3.5"



HARDOX®

The drain line is **mandatory**



Hydraulic forestry mulching head for excavators of 7.5-9 tons, suited for mulching vegetable residue, branches and standing plants up to 3.5".

STANDARD EQUIPMENTS



Hydraulic piston motor with hydr. valves block, "Berti Fluid Box"



Under plate for mount hitch.



Side skids with wear undershoes



Belts transmission (3x) and protective cover for motor.



Forestry rotor with fixed teeth



Berti "XF2" fixed tooth with tungsten-carbide tips

OPTIONAL:

- Mount hitch & pins, made to measure
- Automatic Variable Torque piston motor (13-20 gpm)

MOD.											
	A	B	C							in	n°
CKT/FX 80	40	38	22	29	29	12-15	3400-3600	2500-2600	55	770	885
CKT/FX 100	48	38	22	37	37	12-15	3400-3600	2500-2600	55	880	995

PARK/FM



7-11 tons



4"



STRENX[®]



The drain line is **mandatory**

Hydraulic forestry mulching head for excavators of 7-11 tons, suited for mulching vegetable residue, branches and standing plants up to 4".

STANDARD EQUIPMENTS



Hydraulic piston motor with hydr. valves block, "Berti Fluid Box"



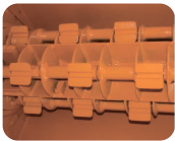
Under plate for mount hitch.



Side skids with wear undershoes



Belts transmission (3x) and protective cover for motor.



Forestry rotor of cage type, with swinging hammers



Double edge 360° swinging hammer-flail

OPTIONAL:

- Mount hitch & pins, made to measure
- Automatic Variable Torque piston motor (18-26 gpm)
- Hydraulic adjustment of rear hood.

MOD.										Lbs	
	A	B	C							min	max
PARK/FM 80	40	34	31	28	16	20-23	3600-3800	2500-2700	110	955	1215
PARK/FM 100	48	34	31	36	18	20-23	3600-3800	2500-2700	110	1045	1305

PARK/FX



7-11 tons

∅ 5"



STRENX®

The drain line is **mandatory**



Hydraulic forestry mulching head for excavators of 7-11 tons, suited for mulching vegetable residue, branches and standing plants up to 5".

STANDARD EQUIPMENTS



Hydraulic piston motor with hydr. valves block, "Berti Fluid Box"



Under plate for mount hitch.



Side skids with wear undershoes



Belts transmission (3x) and protective cover for motor.



Berti "SMOOTH CUT" Forestry rotor, with fixed teeth



Berti "XF2" fixed tooth with tungsten-carbide tips

OPTIONAL:

- Mount hitch & pins, made to measure
- Automatic Variable Torque piston motor (18-26 gpm)
- Hydraulic adjustment of rear hood.

MOD.										Lbs	
	A	B	C							in	n°
PARK/FX 100	48	34	31	37	37	20-23	3600-3800	2500-2700	110	1150	1415
PARK/FX 120	56	34	31	45	45	20-23	3600-3800	2500-2700	110	1300	1570

LAND/SB



12-20 tons



4.5"



STRENX®

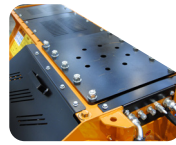
The drain line is **mandatory**

Hydraulic forestry mulching head for excavators of 12-20 tons, suited for mulching vegetation, branches and standing plants up to 4.5".

STANDARD EQUIPMENTS



Hydraulic piston motor with hydr. valves block, "Berti Fluid Box"



Under plate for mount hitch.



Side skids with wear undershoes



Belts transmission (4x) and protective cover for motor.



Forestry rotor of cage type, with swinging hammers



Berti "TI" hammer or "YTI" blades

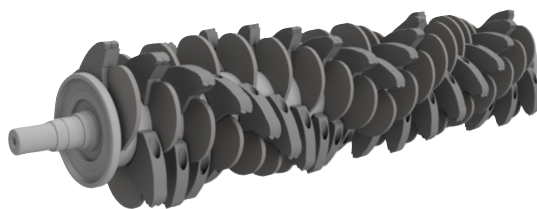
OPTIONAL:

- Mount hitch & pins, made to measure
- Automatic Variable Torque piston motor (30-50 gpm)
- Hydraulic adjustment of rear hood.

MOD.											Lbs	
	A	B	C								min	max
	in	in	in	in	n°	n°	gpm	psi	rotor rpm	Lbs		
LAND/SB 120	58	43	35	47	12	24	30-33	3990-4135	2000-2300	175	1720	2270
LAND/SB 160	74	43	35	63	16	32	30-33	3990-4135	2000-2300	220	1985	2735
LAND/SB 200	89	43	35	78	20	40	37-42	4205-4350	2000-2300	220	2425	2980

SMOOTH CUT FORESTRY ROTOR

Maximum performance, high operating speed.



The new Berti "Smooth Cut" forestry rotor is built with wear-resistant steel profiles, with a rounded shape and an exclusive design. They allow the tooth to have a progressive and smooth impact on the vegetation.

The result is a significant increase in the performance of the machine, less stress on the transmission parts, less wear on the cutting teeth.



THE ADVANTAGES OF THE "SMOOTH CUT" ROTOR

- Lower power absorbing during the working phases.
- Strong reduction of working vibrations, while mulching of heavy trunks/stumps.
- Increased stability of the machine.
- Extends the lifespan of cutting teeth.
- Strong reduction of stress on the transmission line.
- Reduction of fuel consumption.

"SMOOTH CUT" ROTOR IS AVAILABLE ON THESE MODELS:

- Forestry mulchers PTO driven:
KX, EFX/MD, EFX/DT, FOREST PRO
- Forestry mulchers for excavators:
TFX/SB, TFX/SB AVT, EFX MD/SB, EFX MD/SB AVT,
EFX/SB, EFX/SB AVT
- Forestry mulchers for skid-steers:
KX/SSL, KX/SSL AVT, MX/SSL, MX/SSL AVT



TFX/SB



12-16 tons



7.5"



HARDOX®

The drain line is **mandatory**

Hydraulic forestry mulching head for excavators of 12-16 tons, suited for mulching vegetation, branches and standing plants up to 7.5".

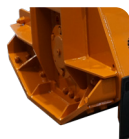
STANDARD EQUIPMENTS



Hydraulic piston motor with hydr. valves block, "Berti Fluid Box"



Under plate for mount hitch.



Side skids with wear undershoes



Belts transmission (4x) and protective cover for motor.



Berti "SMOOTH CUT" Forestry rotor, with fixed teeth



Berti "XF1" fixed tooth with tungsten-carbide tips

OPTIONAL:

- Mount hitch & pins, made to measure
- Automatic Variable Torque piston motor (30-42 gpm)
- Hydraulic adjustment of rear hood.

MOD.											
	A	B	C							in	n°
TFX/SB 100	50	40	32	39	24	30-33	3988-4135	2200-2400	175	1680	2045
TFX/SB 120	58	40	32	47	30	30-33	3988-4135	2200-2400	175	1900	2340
TFX/SB 140	66	40	32	55	36	30-33	3988-4135	2200-2400	175	2095	2535

EFX MD/SB



15-20 tons



12"



STRENX® HARDOX®

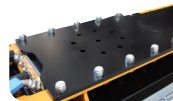
The drain line is **mandatory**

Hydraulic forestry mulching head for excavators of 15-20 tons, suited for mulching vegetation, branches and standing plants up to 12".

STANDARD EQUIPMENTS



Hydraulic piston motor with hydr. valves block, "Berti Fluid Box"



Under plate for mount hitch.



Side skids with wear undershoes



Belts transmission (4x) and protective cover for motor.



Berti "SMOOTH CUT" Forestry rotor, with fixed teeth



Berti "XF1" fixed tooth with tungsten-carbide tips

OPTIONAL:

- Mount hitch & pins, made to measure
- Automatic Variable Torque piston motor (35-50 gpm)
- Hydraulic adjustment of rear hood.

MOD.											
	A	B	C							in	n°
EFX MD/SB 120	60	43	38	47	30	34-37	4205-4350	2200-2400	220	2545	2910
EFX MD/SB 140	68	43	38	55	36	34-37	4205-4350	2200-2400	220	2775	3130

EFX/SB



20-35 tons

Ø 16"



STRENX® HARDOX®

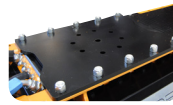
The drain line is **mandatory**

Hydraulic forestry mulching head for excavators of 20-35tons, suited for mulching vegetation, branches and standing plants up to 16".

STANDARD EQUIPMENTS



Hydraulic piston motor with hydr. valves block, "Berti Fluid Box"



Under plate for mount hitch.



Side skids with wear undershoes



Belts transmission (4x) and protective cover for motor.



Berti "SMOOTH CUT" Forestry rotor, with fixed teeth



Berti "XF" fixed tooth with tungsten-carbide tips

OPTIONAL:

- Mount hitch & pins, made to measure
- Automatic Variable Torque piston motor (50-60 gpm)
- Hydraulic adjustment of rear hood.

MOD.										Lbs	
	A	B	C							in	n°
EFX/SB 120	63	50	43	47	30	50-55	4205-4350	2400-2700	220	3150	3595
EFX/SB 140	71	50	43	55	36	50-55	4205-4350	2400-2700	220	3420	3860
EFX/SB 160	79	50	43	63	42	50-55	4205-4350	2400-2700	220	3680	4125

MINI/SSL



20-50 HP



0.8"



STRENX®

The drain line is **mandatory**

Hydraulic mulcher for skid steers and loaders from 20 to 50 HP, suited for mulching grass, bushes, scrub and brushwood up to 0.8".

STANDARD EQUIPMENTS



Belts transmission



Height adjustable rear roller



Hydraulic valves block "Berti Fluid Box"



Side skids with wear undershoes



Berti "G" hammer-flail

OPTIONAL:

- Universal skid-steer mount (SAE J2513)

MOD.											
	A	B	C							in	n°
MINI/SSL 115	50	26	26	44	32	64	11-13	2800-3000	2200-2370	400	600
MINI/SSL 125	54	26	26	47	34	68	11-13	2800-3000	2200-2370	420	620
MINI/SSL 145	62	26	26	55	40	80	11-13	2800-3000	2200-2370	450	650

AF/SSL



50-90 HP

Ø 2.5"



STRENX®



The drain line is **mandatory**

Hydraulic mulcher for skid steers and loaders from 50 to 90 HP, suited for mulching grass, bushes scrub and brushwood up to 2.5".

STANDARD EQUIPMENTS



Floating self-levelling support frame with skid-steers mount (SAE J2513)



Height adjustable rear roller



Hydraulic valves block "Berti Fluid Box"



Side skids with wear undershoes



Belts transmission (3x) and protective cover for motor



Berti "A" hammer-flail

OPTIONAL:

- Hydraulic side shift with hoses.
- Diverter valve ON/OFF to operate the hydr. side shift. with unique hydr. outlet

MOD.										 Lbs	
	A	B	C							in	n°
AF/SSL 145	67	57	31	55	14	42	16-18	2800-3000	2000-2300	1460	1500
AF/SSL 160	72	57	31	61	14	42	23-25	2800-3000	2000-2450	1500	1600
AF/SSL 180	80	57	31	69	16	48	23-25	2800-3000	2000-2450	1600	1700
AF/SSL 200	88	57	31	76	18	54	27-31	2800-3000	2000-2450	1700	1800

KX/SSL



50-90 HP

Ø 6"



STRENX®
HARDOX®

The drain line is **mandatory**

Hydraulic forestry mulcher for skid steers and loaders from 50 to 90 HP, suited for mulching grass, vegetable residues, branches and standing plants up to 6".

STANDARD EQUIPMENTS



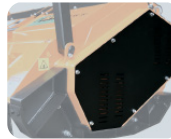
Universal skid-steer mount (SAE J2513)



Hydraulic piston motor with Berti Fluid Box valves block



Side skids with wear undershoes



Belts transmission (3x) with full automatic tensioner.



Hydraulic adjustment of rear hood



Berti XF2 fixed tooth with tungsten carbide tips

OPTIONAL:

- Automatic variable displacement motor (22-29 gpm)
- Diverter valve ON/OFF to operate the hood control with unique hydr. outlet

MOD.										
	A	B	C						in	n°
KX/SSL 150	70	41	28	59	57	23-27	3300-3800	2200-2500	1450	1750
KX/SSL 170	78	41	28	67	65	23-27	3300-3800	2200-2500	1600	1880

MX/SSL



80-120 HP



8"



STRENX®
HARDOX®



The drain line is
mandatory

Hydraulic forestry mulcher for skid steers and loaders from 80 to 120 HP, suited for mulching grass, vegetable residues, branches and standing plants up to 8".

STANDARD EQUIPMENTS



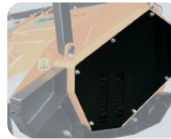
Universal skid-steer mount
(SAE J2513)



Hydraulic piston motor with
Berti Fluid Box valves block



Side skids with wear
undershoes



Belts transmission (3x) with
full automatic tensioner.



Hydraulic adjustment of rear
hood



Berti XF1 fixed tooth with
tungsten carbide tips

OPTIONAL:

- Automatic variable displacement motor (30-42 gpm)
- Diverter valve ON/OFF to operate the hood control with unique hydr. outlet

MOD.										
	A	B	C						in	n°
MX/SSL 140	68	47	61	51	36	26-35	3300-3800	2000-2300	2500	2550
MX/SSL 160	76	47	61	59	42	26-35	3300-3800	2000-2300	2650	2730
MX/SSL 180	84	47	61	67	42	26-35	3300-3800	2000-2300	2850	2900



HYDRAULIC MULCHING

*for excavators from 1.5 to 35 tons
for skid steers and loaders from 20 to 120 HP*



www.bertima.it

follow us:



BERTI MACCHINE AGRICOLE SPA
VIA MUSI 1/A-3-4 - CALDIERO (VR) - 37042 - ITALY
TEL: +39 045 6139 711 - info@bertima.it
www.bertima.it