



**PRODUCT & PRICE
GUIDE
2026**

TOUGH JOBS. TOUGHER EQUIPMENT.

BELLTEC.NET | 800.242.9410

April 2026 - REV05 - Printed in USA
© 2026 Belltec Industries, Inc. All Rights Reserved





GUIDE CONTENTS

AG & CONSTRUCTION AUGER TOOLS

Auger Bit Series Overview	4
DCA Dirt Auger Bits	5
SDA Dirt Auger Bits	6
BHD Dirt Auger Bits	7
Bullet Rock Auger Bits	8
Spiral Rock Auger Bits	9
Tree Auger Bits / Puff Auger Bits	10
Auger Extensions and Adapters	11
Auger Service Kits	12

AUGER DRIVE ATTACHMENTS

Auger Drive Overview & Performance	14-15
MC Series Auger Drives	16
LC Series Auger Drives	17
H Series Auger Drives	18
HTLS Series Auger Drives	19
Auger Drive Accessories	20

MOUNTING KITS

Auger Drive Mounting Kits	22-23
Mounting Kits, Back Plates	24

STUMP BUCKET ATTACHMENT

Stump Bucket Attachments	25
--------------------------------	----

POST DRIVER ATTACHMENT

HP Series Post Drivers	26
HP Series Drive Tools	27
HP Series Spare Parts	28

TM48 DIGGER

TM-48 Digger & Auger Bits	30
---------------------------------	----

UTILITY & FOUNDATION TOOLS

Utility & Foundation Tools Overview	31
---	----

Warranty

Belltec Warranty Policy	32
-------------------------------	----

Belltec does not warrant the accuracy and completeness of the content listed in this publication. Belltec reserves the right to correct any errors at any time. All prices are in US Dollars - freight not included.



GENERAL TERMS AND CONDITIONS

- 1. General Terms.** These Terms and Conditions of Sale ("Terms of Sale") are applicable to the person, firm, company or other purchasing entity ("Customer"), and Belltec Industries, Inc. ("Belltec"), for items ordered by Customer from Belltec in whatever form or quantity ("Goods") within the United States. Any other document(s) containing terms and/or conditions that are in addition to or inconsistent with these Terms of Sale listed herein, including but not limited to penalties or liquidated damages for Belltec's failure to meet delivery dates or any other reason, are rejected by, and shall not be binding upon, Belltec. Belltec's failure to object to any additional, inconsistent, or other provisions contained in any other order or form of communication from Customer shall not be construed as either a waiver or acceptance of such provisions. Belltec reserves the right to correct any clerical or typographical errors at any time.
- 2. Acceptance.** These Terms and Conditions constitute the entire agreement between Belltec and the Customer, superseding all prior agreements, understandings, and communications. Amendments must be in writing and signed by authorized representatives of both parties.
- 3. Pricing.** All prices are in US Dollars. The purchase price of the Goods shall be those in effect on the date of Order Acknowledgment, unless otherwise specified by Belltec.
- 4. Governing Law and Jurisdiction.** All agreements, sales, and transactions between Belltec Industries, Inc. ("Belltec") and any customer (the "Customer") shall be governed by and construed in accordance with the laws of the State of Texas. The parties agree that any dispute arising from these Terms shall be subject to the exclusive jurisdiction of the courts located in Bell County, Texas.
- 5. Invoices and Payment Terms.** Goods will be invoiced at the time of dispatch. Payment is due within the agreed-upon term period of the invoice date. Late payments may incur finance charges at a rate of 1.5% per month, not exceeding the maximum permitted by Texas usury law. Belltec reserves the right to apply payments against any outstanding balance at its discretion.
- 6. Credit Approval and Security Interest.** All orders are subject to credit approval. Customers shall provide annual financial statements and execute any required security agreements as specified by the Company. Belltec retains a security interest in all goods until payment is received in full and may file a UCC-1 financing statement to perfect this interest under Texas law.
- 7. Retention of Title (Security Interest)**
 - (a) Title to goods remains with Belltec until full payment is received.
 - (b) Risk of loss transfers to Customer upon shipment from Belltec's facility (FOB Origin).
 - (c) The relationship between Belltec and Customer is fiduciary in nature, with the Customer holding goods as bailee until paid in full.
 - (d) Belltec authorizes Customers to resell the goods as agents, provided they do not represent themselves as agents of Belltec to third parties.
 - (e) In the event of default, bankruptcy, or insolvency, Belltec may reclaim any unpaid goods as permitted by the Texas Business & Commerce Code.
- 8. Delivery and Risk of Loss.** Belltec ships all goods FOB Origin, Belton, Texas. Risk of loss passes to the Customer at the time of delivery to the carrier. Belltec will make reasonable efforts to meet delivery dates but shall not be liable for delays, including those caused by supply chain disruptions or unforeseen circumstances.
- 9. Returns and Restocking Fee.** All returns require prior written authorization and are subject to a twenty percent (20%) restocking fee. Goods must be returned in new, unused, and saleable condition, in the original packaging (if applicable), within thirty (30) days of delivery, freight prepaid. Special orders, custom-manufactured products, or non-standard items are non-returnable. Acceptance of returns constitutes acceptance of these terms.
- 10. Right to Refuse Supply.** Belltec reserves the right, at its sole discretion, to accept or decline any order as a whole or in part.
- 11. Liability and Warranty Disclaimer**
 - (a) Belltec shall not be liable for any indirect, special, consequential, or incidental damage, including but not limited to lost profits, lost business opportunities, or business interruption.
 - (b) All implied warranties, including but not limited to merchantability and fitness for a particular purpose, are disclaimed to the fullest extent permitted by Texas law.
 - (c) Where Belltec is liable, remedies shall be limited, at Belltec's sole discretion, to:
 - (i) replacement of goods
 - (ii) supply of equivalent goods
 - (iii) refund of the purchase price
 - (iv) repair of goods
 - (v) cost of resupply
 - (d) To the extent permitted by Texas law, the Customer waives all rights under the Texas Deceptive Trade Practices Act (DTPA) unless the Customer qualifies as a consumer under the DTPA.
- 12. Credit Card Transactions.** Belltec accepts payments by wire transfer, ACH, or other agreed-upon methods. Credit card payments may be accepted at Belltec's discretion.
- 13. Default and Remedies.** In the event of default on any payment or other obligation, all sums owed become immediately due and payable. The Customer agrees to indemnify Belltec for all costs incurred in enforcing collection, including reasonable attorney fees, as permitted by Texas law.
- 14. Force Majeure.** Belltec shall not be liable for delays or non-performance due to causes beyond its reasonable control, including but not limited to acts of God, labor disputes, supply chain disruptions, or governmental actions.
- 15. Design Improvements.** Goods sold by Belltec are periodically updated with changes intended to enhance the design and construction of the Goods. As such, any illustrations, specifications, or other descriptive material submitted to the Customer may not depict an exact replica of the Goods at the time of delivery, are merely intended as a general description of the Goods, and are not deemed to constitute a part of this proposal or a warranty as to the specifications of the Goods.

Belltec does not warrant the accuracy and completeness of the content listed in this publication. Belltec reserves the right to correct any errors at any time. All prices are in US Dollars - freight not included.



AG & CONSTRUCTION AUGER TOOLS

Belltec delivers the industry's most complete lineup of auger bits. Designed to elevate your drilling performance in any ground condition. Built with premium components like A500 structural steel center shafts, full-length heavy-duty flighting, and heat-treated alloy steel teeth, every Belltec auger is designed for durability and lasting value.

DCA SERIES | DIRT BIT - EASY GROUND

DCA-Series Augers offer reliable performance at a practical price point. Designed for displaceable soils like sand, silt, and clay. Featuring a durable cast boring head built to handle repeated use and consistent drilling performance.

SDA SERIES | DIRT BIT - MODERATE GROUND

SDA-Series Augers deliver dependable performance where it counts. Built for routine drilling in displaceable soils and fractured rock, they feature a boring head with compound angles and robust 4.5-inch pilot engineered for lasting strength and smooth drilling operation.

BHD SERIES | DIRT BIT - DIFFICULT GROUND

BHD-Series Augers come standard with a 4.5-inch pilot and a patented severe-duty head, they power through gravel, cobble, and fractured rock, reducing hang-ups and letting you focus on the job, not the soil.

BULLET SERIES | ROCK BIT - MODERATE ROCK

Bullet Series Augers are built to conquer rock. Whether it's cobble, boulders, or solid formations, the robust boring head features C1HD carbide teeth set at optimized angles for maximum cutting force and rock-crushing performance.

SPIRAL SERIES | ROCK BIT - DIFFICULT ROCK

Spiral Series Augers turn tough ground into progress. With a conical cutting profile and aggressive layout of C1HD carbide teeth, they grind through concrete, fractured, and solid rock, boosting productivity where others stall.

SPECIALTY AUGER BITS

Tree and Shrub Augers - A variant of DCA-Series Augers, Belltec Tree and Shrub Augers are a cost-effective solution for mechanically digging holes to plant trees or shrubs. Options are available in diameters from 18 to 48 inches.

Belltec Puff Augers - Belltec Puff Augers are specially designed to bore holes into hard ground for installing T-posts. Belltec Puff Augers feature a 1-5/8 inch solid steel shaft and a replaceable 2-inch carbide head that efficiently cuts through hard dirt and rock.



DCA SERIES | DIRT AUGER BITS

DCA-Series Augers offer a budget-friendly solution for efficient drilling in displaceable soils such as sand, silt, and clay.

Designed for durability, each DCA auger features a hardened cast boring head built to handle the rigors of repeated use without compromising performance.



Semi-Double Flight Auger

Double flighting at the head with single flighting along the shaft.



Double Flight Auger

Continuous double flighting along the entire shaft.

DCA SERIES SPARE PARTS		
Part No.	Description	List Price
112087	Tooth Dirt Bolt-On	\$9.05
112087HF	Tooth Dirt Bolt-On Hard Face	\$14.65
115323	Tooth Dirt Bolt-On Carbide	\$32.95
112250	Pilot Bit SB35-SQ	\$36.75

Tooth Bucket Qty
- Bucket qty is 75 pcs for item 112087

DCA SERIES 48" OAL, SEMI-DOUBLE FLIGHT				
Diameter	2" Rnd	2-9/16" Rnd	2" Hex	List Price
6" (152mm)	A06061A	A06061B	A06061C	\$390
9" (228mm)	A09061A	A09061B	A09061C	\$540
12" (305mm)	A12061A	A12061B	A12061C	\$556
15" (381mm)	A15061A	A15061B	A15061C	\$735
18" (457mm)	A18061A	A18061B	A18061C	\$790
24" (609mm)	A24061A	A24061B	A24061C	\$900

DCA SERIES 54" OAL, SEMI-DOUBLE FLIGHT				
Diameter	2" Rnd	2-9/16" Rnd	2" Hex	List Price
9" (228mm)	A09063A	A09063B	A09063C	\$570
12" (305mm)	A12063A	A12063B	A12063C	\$640
15" (381mm)	A15063A	A15063B	A15063C	\$765
18" (457mm)	A18063A	A18063B	A18063C	\$1,015
24" (609mm)	A24063A	A24063B	A24063C	\$1,055

DCA SERIES 48" OAL, DOUBLE FLIGHT				
Diameter	2" Rnd	2-9/16" Rnd	2" Hex	List Price
9" (228mm)	A09060A	A09060B	A09060C	\$550
12" (305mm)	A12060A	A12060B	A12060C	\$605
15" (381mm)	A15060A	A15060B	A15060C	\$785
18" (457mm)	A18060A	A18060B	A18060C	\$920
24" (609mm)	A24060A	A24060B	A24060C	\$1,220
30" (762mm)	A30060A	A30060B	A30060C	\$1,540
36" (914mm)	A36060A	A36060B	A36060C	\$1,950

DCA SERIES 54" OAL, DOUBLE FLIGHT				
Diameter	2" Rnd	2-9/16" Rnd	2" Hex	List Price
9" (228mm)	A09062A	A09062B	A09062C	\$605
12" (305mm)	A12062A	A12062B	A12062C	\$675
15" (381mm)	A15062A	A15062B	A15062C	\$850
18" (457mm)	A18062A	A18062B	A18062C	\$985
24" (609mm)	A24062A	A24062B	A24062C	\$1,265
30" (762mm)	A30062A	A30062B	A30062C	\$1,605
36" (914mm)	A36062A	A36062B	A36062C	\$2,015

Belltec does not warrant the accuracy and completeness of the content listed in this publication. Belltec reserves the right to correct any errors at any time. All prices are in US Dollars - freight not included.



SDA SERIES | DIRT AUGER BITS

SDA-Series Augers deliver dependable performance where it counts. Built for routine drilling in displaceable soils and fractured rock.

Featuring a boring head with compound angles and robust 4.5-inch pilot engineered for lasting strength and smooth drilling operation.



Single Flight Auger

Double flighting at the head with single flighting along the shaft.



Double Flight Auger

Continuous double flighting along the entire shaft.

SDA SERIES SPARE PARTS		
Part No.	Description	List Price
112008	Tooth 35	\$7.25
112026	Tooth 35 Gauge	\$7.25
112009	Tooth 35 Hardface	\$12.90
112027	Tooth 35 Gauge Hardface	\$12.90
112012	Tooth 35 Rock Flat 1336 Carbide	\$32.95
112067A	Rubber Clip Lock Keeper	\$0.80
112252	Pilot Bit SB45-SQ	\$47.25
112253	Pilot Bit SB45-SQ Hardface	\$94.50

Tooth Bucket Qty

- Bucket qty is 75 pcs for items 112008 and 112026

Belltec does not warrant the accuracy and completeness of the content listed in this publication. Belltec reserves the right to correct any errors at any time. All prices are in US Dollars - freight not included.

SDA SERIES 48" OAL, SINGLE FLIGHT				
Diameter	2" Rnd	2-9/16" Rnd	2" Hex	List Price
4.5" (114mm)	A04531A	A04531B	A04531C	\$380
6" (152mm)	A06031A	A06031B	A06031C	\$480
8" (203mm)	A08031A	A08031B	A08031C	\$520
9" (228mm)	A09031A	A09031B	A09031C	\$530
10" (254mm)	A10031A	A10031B	A10031C	\$615
12" (305mm)	A12031A	A12031B	A12031C	\$625
15" (381mm)	A15031A	A15031B	A15031C	\$875
18" (457mm)	A18031A	A18031B	A18031C	\$950
24" (609mm)	A24031A	A24031B	A24031C	\$1,195
30" (762mm)	A30031A	A30031B	A30031C	\$1,480
36" (914mm)	A36031A	A36031B	A36031C	\$1,745

SDA SERIES 48" OAL, DOUBLE FLIGHT				
Diameter	2" Rnd	2-9/16" Rnd	2" Hex	List Price
8" (203mm)	A08011A	A08011B	A08011C	\$655
9" (228mm)	A09011A	A09011B	A09011C	\$710
10" (254mm)	A10011A	A10011B	A10011C	\$780
12" (305mm)	A12011A	A12011B	A12011C	\$795
15" (381mm)	A15011A	A15011B	A15011C	\$920
18" (457mm)	A18011A	A18011B	A18011C	\$1,055
24" (609mm)	A24011A	A24011B	A24011C	\$1,495
30" (762mm)	A30011A	A30011B	A30011C	\$1,995
36" (914mm)	A36011A	A36011B	A36011C	\$2,240

SDA SERIES 54" OAL, SINGLE FLIGHT				
Diameter	2" Rnd	2-9/16" Rnd	2" Hex	List Price
4.5" (114mm)	A04530A	A04530B	A04530C	\$415
6" (152mm)	A06030A	A06030B	A06030C	\$510
8" (203mm)	A08030A	A08030B	A08030C	\$550
9" (228mm)	A09030A	A09030B	A09030C	\$560
10" (254mm)	A10030A	A10030B	A10030C	\$645
12" (305mm)	A12030A	A12030B	A12030C	\$655
15" (381mm)	A15030A	A15030B	A15030C	\$905
18" (457mm)	A18030A	A18030B	A18030C	\$983
24" (609mm)	A24030A	A24030B	A24030C	\$1,230
30" (762mm)	A30030A	A30030B	A30030C	\$1,515
36" (914mm)	A36030A	A36030B	A36030C	\$1,775



BHD SERIES | DIRT AUGER BITS

BHD-Series Augers utilize a patented severe-duty head, capable of powering through gravel, cobble, and fractured rock.

The contoured cast head reduces hang-ups while drilling, letting you focus on the job, not the soil.



Single Flight Auger

Double flighting at the head with single flighting along the shaft.



Double Flight Auger

Continuous double flighting along the entire shaft.

BHD SERIES 48" OAL, SINGLE FLIGHT				
Diameter	2" Rnd	2-9/16" Rnd	2" Hex	List Price
6" (152mm)	A06036A	A06036B	A06036C	\$618
8" (203mm)	A08036A	A08036B	A08036C	\$635
9" (228mm)	A09036A	A09036B	A09036C	\$660
10" (254mm)	A10036A	A10036B	A10036C	\$705
12" (305mm)	A12036A	A12036B	A12036C	\$740
15" (381mm)	A15036A	A15036B	A15036C	\$920
18" (457mm)	A18036A	A18036B	A18036C	\$1,125
20" (508mm)	A20036A	A20036B	A20036C	\$1,425
24" (609mm)	A24036A	A24036B	A24036C	\$1,505
30" (762mm)	A30036A	A30036B	A30036C	\$2,010
36" (914mm)	A36036A	A36036B	A36036C	\$2,120
42" (1066mm)	A42036A	A42036B	A42036C	\$2,800
48" (1219mm)	A48036A	A48036B	A48036C	\$4,025

BHD SERIES 48" OAL, DOUBLE FLIGHT				
Diameter	2" Rnd	2-9/16" Rnd	2" Hex	List Price
8" (203mm)	A08038A	A08038B	A08038C	\$730
9" (228mm)	A09038A	A09038B	A09038C	\$755
10" (254mm)	A10038A	A10038B	A10038C	\$815
12" (305mm)	A12038A	A12038B	A12038C	\$855
15" (381mm)	A15038A	A15038B	A15038C	\$1,060
18" (457mm)	A18038A	A18038B	A18038C	\$1,295
20" (508mm)	A20038A	A20038B	A20038C	\$1,645
24" (609mm)	A24038A	A24038B	A24038C	\$1,730
30" (762mm)	A30038A	A30038B	A30038C	\$2,305
36" (914mm)	A36038A	A36038B	A36038C	\$2,440

BHD SERIES SPARE PARTS		
Part No.	Description	List Price
112008	Tooth 35	\$7.25
112026	Tooth 35 Gauge	\$7.25
112009	Tooth 35 Hardface	\$12.90
112027	Tooth 35 Gauge Hardface	\$12.90
112012	Tooth 35 Rock Flat 1336 Carbide	\$32.95
115362	Pilot Bit FD475	\$89.25

Tooth Bucket Qty

- Bucket qty is 75 pcs for items 112008 and 112026

Belltec does not warrant the accuracy and completeness of the content listed in this publication. Belltec reserves the right to correct any errors at any time. All prices are in US Dollars - freight not included.



BULLET SERIES | ROCK AUGER BITS

Developed for demanding ground conditions, including tough cobble, boulders, fractured formations, and solid rock.

The Bullet Series features C1HD Plus Bullet Teeth along with convenient wear indicator strips on the boring head, and is built with reinforced 3/4-inch flighting for extended service life.



Single Flight Auger

Double flighting at the head with single flighting along the shaft.



Double Flight Auger

Continuous double flighting along the entire shaft.

BULLET SERIES | 48" OAL, SINGLE FLIGHT

Diameter	2" Rnd	2-9/16" Rnd	2" Hex	List Price
4.5" (114mm)	A04518A	A04518B	A04518C	\$995
6" (152mm)	A06018A	A06018B	A06018C	\$1,105
8" (203mm)	A08005A	A08005B	A08005C	\$1,335
9" (228mm)	A09005A	A09005B	A09005C	\$1,405
10" (254mm)	A10005A	A10005B	A10005C	\$1,540
12" (305mm)	A12005A	A12005B	A12005C	\$1,530
15" (381mm)	A15005A	A15005B	A15005C	\$2,415
18" (457mm)	A18005A	A18005B	A18005C	\$2,520
24" (609mm)	A24005A	A24005B	A24005C	\$3,115
30" (762mm)	A30005A	A30005B	A30005C	\$3,465
36" (914mm)	A36005A	A36005B	A36005C	\$4,005

BULLET SERIES | 48" OAL, DOUBLE FLIGHT

Diameter	2" Rnd	2-9/16" Rnd	2" Hex	List Price
8" (203mm)	A08008A	A08008B	A08008C	\$1,570
9" (228mm)	A09008A	A09008B	A09008C	\$1,540
10" (254mm)	A10008A	A10008B	A10008C	\$1,640
12" (305mm)	A12008A	A12008B	A12008C	\$2,025
15" (381mm)	A15008A	A15008B	A15008C	\$2,575
18" (457mm)	A18008A	A18008B	A18008C	\$2,705
24" (609mm)	A24008A	A24008B	A24008C	\$3,215
30" (762mm)	A30008A	A30008B	A30008C	\$3,565
36" (914mm)	A36008A	A36008B	A36008C	\$4,110

BULLET SERIES | SPARE PARTS

Part No.	Description	List Price
115185	Tooth C1HDLRS	\$8.85**
115052	Pilot Bit BT500S	\$446.25

Tooth Bucket Qty

- Bucket qty is 75 pcs for item 115185

** 115185 is NET PRICE, no additional discount on this item.



SPIRAL SERIES | ROCK AUGER BITS

Spiral Series Augers turn tough ground into progress. Designed specifically to drill in concrete, fractured rock, and solid rock conditions.

With a conical cutting profile and aggressive layout of C1HD carbide teeth, this auger series boasts productivity where others stall.



Single Flight Auger
Single flighting at the head with single flighting along the shaft.

SPIRAL SERIES 48" OAL, SINGLE FLIGHT				
Diameter	2" Rnd	2-9/16" Rnd	2" Hex	List Price
9" (228mm)	A09040A	A09040B	A09040C	\$1,715
12" (305mm)	A12040A	A12040B	A12040C	\$2,325
15" (381mm)	A15040A	A15040B	A15040C	\$2,850
18" (457mm)	A18040A	A18040B	A18040C	\$3,245
24" (609mm)	A24040A	A24040B	A24040C	\$3,830
30" (762mm)	A30040A	A30040B	A30040C	\$4,790
36" (914mm)	A36040A	A36040B	A36040C	\$5,745

SPIRAL SERIES SPARE PARTS		
Part No.	Description	List Price
115185	Tooth C1HDLRS	\$8.85**
115052	Pilot Bit BT500S	\$446.25

Tooth Bucket Qty
- Bucket qty is 75 pcs for item 115185

** 115185 is NET PRICE, no additional discount on this item.



All Belltec Auger Bits are Proudly manufactured in Belton, Texas, home of Belltec Industries.

Belltec has been designing, patenting, and producing innovative construction attachments for the mobile construction and off-highway equipment industry for over thirty years.

Belltec does not warrant the accuracy and completeness of the content listed in this publication. Belltec reserves the right to correct any errors at any time. All prices are in US Dollars - freight not included.



TREE AUGER SERIES | DIRT AUGER BITS

Belltec Tree Augers are a specialized adaptation of our trusted DCA-Series Augers, engineered with a two-stage, variable-diameter design that creates the perfect ground socket for planting trees and shrubs.

Built for longevity, each Tree Auger is equipped with a hardened cast boring head, delivering reliable performance across a wide range of soil conditions.

FEATURES:

- Two-stage variable diameter flighting
- Bolt-on tooth design for a secure fit
- Available in 48" overall lengths
- 5/16-in flighting and a 3.5" diameter pilot

TREE AUGER SERIES SPARE PARTS		
Part No.	Description	List Price
112087	Tooth Dirt Bolt-On	\$9.05
112250	Pilot Bit SB35-SQ	\$36.75

Tooth Bucket Qty
- Bucket qty is 75 pcs for item 112087

TREE SERIES 48" DAL, DOUBLE FLIGHT				
Diameter	2" Rnd	2-9/16" Rnd	2" Hex	List Price
18" (457mm)	A09027A	A09027B	A09027C	\$1,025
24" (609mm)	A12027A	A12027B	A12027C	\$1,065
30" (762mm)	A15027A	A15027B	A15027C	\$1,510
36" (914mm)	A18027A	A18027B	A18027C	\$1,765
42" (1066mm)	A20027A	A20027B	A20027C	\$2,370
48" (1219mm)	A24027A	A24027B	A24027C	\$2,995



PUFF AUGER SERIES | ROCK AUGER BITS

Belltec Puff Augers are purpose-built for driving holes into tough ground conditions perfect for quick and efficient T-post installation.

Each Puff Auger features a rugged 1-5/8" solid steel shaft and a durable, replaceable 2" carbide cutting head designed to power through hard soil and rocky terrain with ease.

PUFF AUGER SERIES SPARE PARTS		
Part No.	Description	List Price
115316	Pilot Bit CP-16	\$165.50

PUFF AUGER SERIES 48" DAL				
Diameter	2" Rnd	2-9/16" Rnd	2" Hex	List Price
2" (50mm)	A02005A	A02005B	A02005C	\$562



Belltec does not warrant the accuracy and completeness of the content listed in this publication. Belltec reserves the right to correct any errors at any time. All prices are in US Dollars - freight not included.



EXTENSIONS & ADAPTERS | ACCESSORIES

Belltec offers a comprehensive selection of Auger Bit Extensions in both telescopic and fixed styles. Telescopic extensions slide inside the auger bit, enabling adjustable reach when extra depth is needed. Fixed extensions deliver an instant length increase and are ideal for equipment with sufficient operating height. All extensions are available in the most commonly used connection sizes to ensure a secure fit with your setup.



2" HEX FIXED EXT.		
Part No.	Length	List Price
EH200024F	24" (609mm)	\$275
EH200036F	36" (914mm)	\$340
EH200048F	48" (1219mm)	\$405
EH200060F	60" (1524mm)	\$485
EH200072F	72" (1828mm)	\$520



2" ROUND FIXED EXT.		
Part No.	Length	List Price
ER200024F	24" (609mm)	\$220
ER200036F	36" (914mm)	\$265
ER200048F	48" (1219mm)	\$299



2-9/16" RND FIXED EXT.		
Part No.	Length	List Price
ER250024F	24" (609mm)	\$265
ER250036F	36" (914mm)	\$278
ER250048F	48" (1219mm)	\$350
ER250060F	60" (1524mm)	\$395
ER250072F	72" (1828mm)	\$510



2" HEX VARIABLE EXT.		
Part No.	Length	List Price
EH200024	24" (609mm)	\$315
EH200036	36" (914mm)	\$375
EH200048	48" (1219mm)	\$450
EH200060	60" (1524mm)	\$530
EH200072	72" (1828mm)	\$598



2" RND VARIABLE EXT.		
Part No.	Length	List Price
ER200024	24" (609mm)	\$230
ER200036	36" (914mm)	\$265
ER200048	48" (1219mm)	\$295



2-9/16" RND VARIABLE EXT.		
Part No.	Length	List Price
ER250024	24" (609mm)	\$315
ER250036	36" (914mm)	\$360
ER250048	48" (1219mm)	\$395



2" HEX HD-TUBULAR EXT.		
Part No.	Length	List Price
EHHD200024	24" (609mm)	\$465
EHHD200036	36" (914mm)	\$565
EHHD200048	48" (1219mm)	\$600
EHHD200060	60" (1524mm)	\$645
EHHD200072	72" (1828mm)	\$695
EHHD200084	84" (2133mm)	\$745
EHHD200096	96" (2438mm)	\$845
EHDD200120	120" (3048mm)	\$895
EHHD200144	144" (3657mm)	\$945



DRIVE SHAFT ADAPTERS		
Part No.	Type / Description	List Price
AH200R200	2" Hex Female to 2" Round Male	\$252
AH200R250	2" Hex Female to 2.5" Round Male	\$285
AH200R250D	2" Hex Female to 2.5" Round Male with 1/2" Bolt Hole	\$275
AH200SQ200	2" Hex Female to 2" Square Male	\$375
AH250H200	2.5" Hex Female to 2" Hex Male with Shear bolt Protection	\$600
AR200R250	2" Round Male to 2.5" Round Male	\$232
AR200H200	2" Round Female to 2" Hex Male	\$232
AR256R200	2.5" Round Female to 2" Round Male	\$245
AR256H200	2.5" Round Female to 2" Hex Male	\$245
AH250H200WC	2.5" Hex Female to 2" Hex Male with Welded Coupler	\$602

Belltec does not warrant the accuracy and completeness of the content listed in this publication. Belltec reserves the right to correct any errors at any time. All prices are in US Dollars - freight not included.



AUGER SERVICE KITS | CONSTRUCTION AUGERS

Belltec's complete Auger Bit Service Kits provide a smarter, simpler solution. Everything you need to fully restore your auger bit, packaged in one convenient user friendly kit.

Each kit contains all wear components need to outfit the auger bit and return it to new condition. Correct number of teeth, pilot bit and replacement hardware.



DCA SERIES | SERVICE KITS

Part No.	Description	List Price
302100	Auger Bit Service Kit DCA 6, 9"	\$65
302101	Auger Bit Service Kit DCA 12, 15"	\$90
302102	Auger Bit Service Kit DCA 18"	\$104
302103	Auger Bit Service Kit DCA 24"	\$128
302104	Auger Bit Service Kit DCA 30"	\$148
302105	Auger Bit Service Kit DCA 36"	\$174

DCA Kits Include

- Correct number of auger teeth (112087)
- Replacement pilot bit (112250)
- Replacement hardware (nuts & bolts)

SDA SERIES | SERVICE KITS

Part No.	Description	List Price
302106	Auger Bit Service Kit SDA 4.5"	\$50
302107	Auger Bit Service Kit SDA 6"	\$66
302108	Auger Bit Service Kit SDA 8, 9, 10, 12"	\$84
302109	Auger Bit Service Kit SDA 15, 18"	\$99
302110	Auger Bit Service Kit SDA 24"	\$114
302111	Auger Bit Service Kit SDA 30"	\$130
302112	Auger Bit Service Kit SDA 36"	\$145

SDA Kits Include

- Correct number of auger teeth (112008 & 112026)
- Replacement pilot bit (112252)
- Replacement rubber clip keepers (112067A)

BHD SERIES | SERVICE KITS

Part No.	Description	List Price
302113	Auger Bit Service Kit BHD 6, 8"	\$109
302114	Auger Bit Service Kit BHD 9, 10, 12"	\$134
302115	Auger Bit Service Kit BHD 15"	\$154
302116	Auger Bit Service Kit BHD 18, 20"	\$175
302117	Auger Bit Service Kit BHD 24"	\$197
302118	Auger Bit Service Kit BHD 30"	\$218
302119	Auger Bit Service Kit BHD 36"	\$260
302120	Auger Bit Service Kit BHD 42"	\$279
302121	Auger Bit Service Kit BHD 48"	\$345

BHD Kits Include

- Correct number of auger teeth (112008 & 112026)
- Replacement pilot bit (115362)
- Replacement hardware (nuts & bolts)

Belltec does not warrant the accuracy and completeness of the content listed in this publication. Belltec reserves the right to correct any errors at any time. All prices are in US Dollars - freight not included.



THE COMPLETE PACKAGE

The powerful and modular H300 Auger Drive shown, mounted to the QT100 SSL Mount with full swivel, outfitted with the rock crushing Bullet Series Auger Bit.

Belltec does not warrant the accuracy and completeness of the content listed in this publication. Belltec reserves the right to correct any errors at any time. All prices are in US Dollars - freight not included.



AUGER DRIVE ATTACHMENT OVERVIEW

Belltec offers a complete lineup of hydraulic auger drives to meet the demanding needs of modern equipment operators. Constructed with the highest-quality components, expect years of top performance and reliability backed with the best warranty on the market.



MC SERIES | AUGER DRIVES

MC Series features a unique gimbal system and delivers the performance of our popular LC series in a compact mounting frame. The unique center gimbal allows the drive unit to be locked in position or free-float, enabling use on uneven ground and providing ample ground clearance.



LC SERIES | AUGER DRIVES

LC Series Auger Drives are compact, lightweight, and robust, providing an ideal weight-to-power ratio. Designed to operate at lower auxiliary flow rates, the LC Series is well-suited for smaller prime movers and will maximize any machine's drilling capability.



H SERIES | AUGER DRIVE

H Series Auger Drives are built for pros who expect serious performance in all drilling applications. Featuring an interchangeable output shaft allowing for a 2" Hex or 2-9/16" round. The output shaft is covered by our lifetime part replacement program. If the shaft breaks, we'll replacement it. Free.



HTLS SERIES | AUGER DRIVE

HTLS Series Auger Drives are the most powerful models in the Belltec lineup, developed for the toughest drilling conditions. Torque ranges from 6,000 to 10,000 ft-lbs and can be outfitted to a wide range of prime movers. The HTLS provides maximum torque and does not require a case drain.

DESIGNED TO MAXIMIZE YOUR EQUIPMENT

Belltec offers versatile mounting kit options that turn prime movers into powerful drilling machines. Ideal for ranching, agriculture, rental, and construction jobs in tough environments.





AUGER DRIVE PERFORMANCE SPECIFICATIONS

MC SERIES

DRIVE MODEL	TORQUE Ft-Lbs	SPEED RPM	PRESSURE PSI	MAX FLOW GPM	OUTPUT SHAFT	MAX AUGER DIA. DIRT / ROCK
MC-150	1,840	87	3,500	15	2" Hex	18" / 18"
MC-200	2,038	105	3,500	20	2" Hex	30" / 24"
MC-300	2,929	110	3,500	30	2" Hex	36" / 36"

1. Continuous hydraulic pressure is 3,000 PSI. Intermittent pressure rating is 3,500 PSI.
2. MC Series Warranty - 3 Year Limited.

LC SERIES

DRIVE MODEL	TORQUE Ft-Lbs	SPEED RPM	PRESSURE PSI	MAX FLOW GPM	OUTPUT SHAFT	MAX AUGER DIA. DIRT / ROCK
LC-150	1,840	87	3,500	15	2" Hex	18" / 18"
LC-200	2,038	105	3,500	20	2" Hex	30" / 24"
LC-300	2,929	110	3,500	30	2" Hex	36" / 36"
LC-350	3,529	106	3,500	35	2" Hex	36" / 36"

1. Continuous hydraulic pressure is 3,000 PSI. Intermittent pressure rating is 3,500 PSI.
2. LC Series Warranty - 4 Year Limited.

H SERIES

DRIVE MODEL	TORQUE Ft-Lbs	SPEED RPM	PRESSURE PSI	MAX FLOW GPM	OUTPUT SHAFT	MAX AUGER DIA. DIRT / ROCK
H-200	2,486	86	3,500	20	2" Hex / 2-9/16" Rnd	30" / 24"
H-300	3,572	90	3,500	30	2" Hex / 2-9/16" Rnd	36" / 36"
H-350	4,303	87	3,500	35	2" Hex / 2-9/16" Rnd	36" / 36"

1. Continuous hydraulic pressure is 3,000 PSI. Intermittent pressure rating is 3,500 PSI.
2. All H-Series models include two replaceable output shaft - a 2" Hex and a 2-9/16" Round.
3. H Series Warranty - 6 Year Limited - Lifetime Warranty on Replaceable Shaft.

HTLS SERIES

DRIVE MODEL	TORQUE Ft-Lbs	SPEED RPM	PRESSURE PSI	MAX FLOW GPM	OUTPUT SHAFT	MAX AUGER DIA. DIRT / ROCK
HTLS-6K	6,722	24	3,500	15	2" Hex	36" / 36"
HTLS-7K	7,767	28	3,500	20	2" Hex	36" / 36"
HTLS-10K	12,216	26	3,500	30	2-1/2" Hex	48" / 48"

1. Continuous hydraulic pressure is 3,000 PSI. Intermittent pressure rating is 3,500 PSI.
2. All H-Series models include two replaceable output shaft - a 2" Hex and a 2-9/16" Round.
3. HTLS Series Warranty - 3 Year Limited.

Note - All performance values are theoretical.

MC SERIES | AUGER DRIVES (MINI TRACK LOADER)

Developed specifically for Mini Track Loaders, the MC Series features a unique gimbal system and delivers the performance of our popular LC series in a compact mounting frame.

The center gimbal allows the drive unit to be locked in position or free-float, enabling use on uneven ground and providing ample ground clearance.



RECOMMENDED PRIME MOVERS



MC-150		Imperial	Metric
Max Continuous Hydraulic Pressure		3000 PSI	207 Bar
Max Intermittent Hydraulic Pressure		3500 PSI	241 Bar
Min/Max Hydraulic Flow		6-15 GPM	23-56 LPM
Max Torque @ 3500 PSI		1764 ft-lbs	2391 Nm
Max Speed @ 15 GPM		91 RPM	
Output Shaft		2" Hex	
Dirt Auger Max Diameter		18"	457mm
Rock Auger Max Diameter		18"	457mm
Part No.	Model	Weight	List Price
302261	MC-150 MTL Univ.	148 lbs (68 Kg)	N/A
302262	MC-150 MT Series	206 lbs (93 Kg)	N/A

MC-200		Imperial	Metric
Max Continuous Hydraulic Pressure		3000 PSI	207 Bar
Max Intermittent Hydraulic Pressure		3500 PSI	241 Bar
Min/Max Hydraulic Flow		10-20 GPM	37-75 LPM
Max Torque @ 3500 PSI		2038 ft-lbs	2763 Nm
Max Speed @ 20 GPM		105 RPM	
Output Shaft		2" Hex	
Dirt Auger Max Diameter		30"	762mm
Rock Auger Max Diameter		24"	609mm
Part No.	Model	Weight	List Price
302263	MC-200 MTL Univ.	148 lbs (68 Kg)	N/A
302264	MC-200 MT Series	206 lbs (93 Kg)	N/A

Includes:

- Auger Drive, selected mounting kit and 60" hose kit.

Includes:

- Auger Drive, selected mounting kit and 60" hose kit.

MC-300		Imperial	Metric
Max Continuous Hydraulic Pressure		3000 PSI	207 Bar
Max Intermittent Hydraulic Pressure		3500 PSI	241 Bar
Min/Max Hydraulic Flow		15-30 GPM	56-113 LPM
Max Torque @ 3500 PSI		2629 ft-lbs	3971 Nm
Max Speed @ 30 GPM		110 RPM	
Output Shaft		2" Hex	
Dirt Auger Max Diameter		36"	914mm
Rock Auger Max Diameter		36"	914mm
Part No.	Model	Weight	List Price
302265	MC-300 MTL Univ.	148 lbs (68 Kg)	N/A
302266	MC-300 MT Series	206 lbs (93 Kg)	N/A

Includes:

- Auger Drive, selected mounting kit and 60" hose kit.

Torque and speed values are theoretical, actual performance may vary.

Belltec does not warrant the accuracy and completeness of the content listed in this publication. Belltec reserves the right to correct any errors at any time. All prices are in US Dollars - freight not included.



LC SERIES | COMPACT AUGER DRIVES

The LC Series Auger Drives combine a compact and durable design with an optimal balance of weight and power.

Engineered for efficient performance at lower auxiliary flow rates, the LC Series is an excellent match for smaller prime movers, unlocking the full drilling potential of your equipment.



AUGER DRIVE ATTACHMENT

RECOMMENDED PRIME MOVERS



LC-150		Imperial	Metric
Max Continuous Hydraulic Pressure		3000 PSI	207 Bar
Max Intermittent Hydraulic Pressure		3500 PSI	241 Bar
Min/Max Hydraulic Flow		6-15 GPM	23-56 LPM
Max Torque @ 3500 PSI		1764 ft-lbs	2391 Nm
Max Speed @ 15 GPM		91 RPM	
Output Shaft		2" Hex	
Dirt Auger Max Diameter		18"	457mm
Rock Auger Max Diameter		18"	457mm
Part No.	Model	Weight	List Price
113130	LC-150 (Drive)	150 lbs (68Kg)	\$2,272
113130-Kit	LC-150 (Kit)	277 lbs (125 Kg)	\$3,115

113130 Includes:

- Auger Drive only, mounting kit and hoses are not included.

113130-Kit Includes:

- LC-150 Auger Drive (113130), Univ. SSL Mount (QT100), 1/2" x 96" Hose Kit (111385)

LC-200		Imperial	Metric
Max Continuous Hydraulic Pressure		3000 PSI	207 Bar
Max Intermittent Hydraulic Pressure		3500 PSI	241 Bar
Min/Max Hydraulic Flow		10-20 GPM	37-75 LPM
Max Torque @ 3500 PSI		2038 ft-lbs	2763 Nm
Max Speed @ 20 GPM		105 RPM	
Output Shaft		2" Hex	
Dirt Auger Max Diameter		30"	762mm
Rock Auger Max Diameter		24"	609mm
Part No.	Model	Weight	List Price
113131	LC-200 (Drive)	150 lbs (68Kg)	\$2,360
113131-Kit	LC-200 (Kit)	277 lbs (125 Kg)	\$3,205

113131 Includes:

- Auger Drive only, mounting kit and hoses are not included.

113131-Kit Includes:

- LC-200 Auger Drive (113131), Univ. SSL Mount (QT100), 1/2" x 96" Hose Kit (111385)

LC-300		Imperial	Metric
Max Continuous Hydraulic Pressure		3000 PSI	207 Bar
Max Intermittent Hydraulic Pressure		3500 PSI	241 Bar
Min/Max Hydraulic Flow		15-30 GPM	56-113 LPM
Max Torque @ 3500 PSI		2929 ft-lbs	3971 Nm
Max Speed @ 30 GPM		110 RPM	
Output Shaft		2" Hex	
Dirt Auger Max Diameter		36"	914mm
Rock Auger Max Diameter		36"	914mm
Part No.	Model	Weight	List Price
113132	LC-300 (Drive)	150 lbs (68Kg)	\$2,450
113132-Kit	LC-300 (Kit)	277 lbs (125 Kg)	\$3,290

113132 Includes:

- Auger Drive only, mounting kit and hoses are not included.

113132-Kit Includes:

- LC-300 Auger Drive (113132), Univ. SSL Mount (QT100), 1/2" x 96" Hose Kit (111385)

LC-350		Imperial	Metric
Max Continuous Hydraulic Pressure		3000 PSI	207 Bar
Max Intermittent Hydraulic Pressure		3500 PSI	241 Bar
Min/Max Hydraulic Flow		20-35 GPM	75-132 LPM
Max Torque @ 3500 PSI		3529 ft-lbs	4784 Nm
Max Speed @ 35 GPM		106 RPM	
Output Shaft		2" Hex	
Dirt Auger Max Diameter		36"	914mm
Rock Auger Max Diameter		36"	914mm
Part No.	Model	Weight	List Price
113133	LC-200 (Drive)	151 lbs (69Kg)	\$2,590
113133-Kit	LC-200 (Kit)	278 lbs (126 Kg)	\$3,435

113133 Includes:

- Auger Drive only, mounting kit and hoses are not included.

113133-Kit Includes:

- LC-200 Auger Drive (113133), Univ. SSL Mount (QT100), 1/2" x 96" Hose Kit (111385)

Torque and speed values are theoretical, actual performance may vary.

Belltec does not warrant the accuracy and completeness of the content listed in this publication. Belltec reserves the right to correct any errors at any time. All prices are in US Dollars - freight not included.



H SERIES | HEAVY DUTY AUGER DRIVES

The H Series Auger Drives are designed for professionals who demand high-performance drilling across a wide range of applications.

Each H Series model comes equipped with an interchangeable output shaft, giving you the flexibility to switch between a 2" hex and a 2-9/16" round configuration.

RECOMMENDED PRIME MOVERS



H-200		Imperial	Metric
Max Continuous Hydraulic Pressure		3000 PSI	207 Bar
Max Intermittent Hydraulic Pressure		3500 PSI	241 Bar
Min/Max Hydraulic Flow		10-20 GPM	37-75 LPM
Max Torque @ 3500 PSI		2486 ft-lbs	3370 Nm
Max Speed @ 20 GPM		86 RPM	
Output Shaft		2" Hex or 2-9/16" Round	
Dirt Auger Max Diameter		30"	762mm
Rock Auger Max Diameter		24"	609mm
Part No.	Model	Weight	List Price
113001	H-200 (Drive)	183 lbs (83Kg)	\$2,980
113083	H-200 (Kit)	310 lbs (140 Kg)	\$3,815

113001 Includes:

- Auger Drive only, mounting kit and hoses are not included.

113083-Kit Includes:

- H-200 Auger Drive (113001), Univ. SSL Mount (QT100), 1/2" x 96" Hose Kit (111385)

H-350		Imperial	Metric
Max Continuous Hydraulic Pressure		3000 PSI	207 Bar
Max Intermittent Hydraulic Pressure		3500 PSI	241 Bar
Min/Max Hydraulic Flow		20-35 GPM	75-132 LPM
Max Torque @ 3500 PSI		4303 ft-lbs	5834 Nm
Max Speed @ 35 GPM		87 RPM	
Output Shaft		2" Hex or 2-9/16" Round	
Dirt Auger Max Diameter		36"	914mm
Rock Auger Max Diameter		36"	914mm
Part No.	Model	Weight	List Price
113016	H-350 (Drive)	216 lbs (98 Kg)	\$3,290
113085	H-350 (Kit)	343 lbs (155 Kg)	\$4,125

113016 Includes:

- Auger Drive only, mounting kit and hoses are not included.

113085-Kit Includes:

- H-350 Auger Drive (113016), Univ. SSL Mount (QT100), 1/2" x 96" Hose Kit (111385)

H-300		Imperial	Metric
Max Continuous Hydraulic Pressure		3000 PSI	207 Bar
Max Intermittent Hydraulic Pressure		3500 PSI	241 Bar
Min/Max Hydraulic Flow		15-30 GPM	56-113 LPM
Max Torque @ 3500 PSI		3572 ft-lbs	4843 Nm
Max Speed @ 30 GPM		90 RPM	
Output Shaft		2" Hex or 2-9/16" Round	
Dirt Auger Max Diameter		36"	914mm
Rock Auger Max Diameter		36"	914mm
Part No.	Model	Weight	List Price
113014	H-300 (Drive)	185 lbs (84Kg)	\$3,085
113084	H-300 (Kit)	312 lbs (141 Kg)	\$3,920

113014 Includes:

- Auger Drive only, mounting kit and hoses are not included.

113084-Kit Includes:

- H-300 Auger Drive (113014), Univ. SSL Mount (QT100), 1/2" x 96" Hose Kit (111385)

FIELD-SERVICEABLE OUTPUT SHAFT

LIFETIME WARRANTY

Each H Series ships with a 2" hex and a 2-9/16" round replaceable shaft.

With our lifetime replacement guarantee, if the shaft ever breaks, simply send it back—we'll replace it at no cost.



Torque and speed values are theoretical, actual performance may vary.

Belltec does not warrant the accuracy and completeness of the content listed in this publication. Belltec reserves the right to correct any errors at any time. All prices are in US Dollars - freight not included.



HTLS SERIES | HIGH TORQUE AUGER DRIVES

The HTLS Series represents the highest performing Drives in the Belltec lineup and are purpose-built for the most demanding drilling environments.

Designed for maximum torque without the need for a case drain, the HTLS Series combines power and simplicity for peak drilling performance.



AUGER DRIVE ATTACHMENT

RECOMMENDED PRIME MOVERS



HTLS-6K		Imperial	Metric
Max Continuous Hydraulic Pressure		3000 PSI	207 Bar
Max Intermittent Hydraulic Pressure		3500 PSI	241 Bar
Min/Max Hydraulic Flow		6-15 GPM	23-56 LPM
Max Torque @ 3500 PSI		6722 ft-lbs	9113 Nm
Max Speed @ 15 GPM		24 RPM	
Output Shaft		2" Hex	
Dirt Auger Max Diameter		36"	914mm
Rock Auger Max Diameter		36"	914mm
Part No.	Model	Weight	List Price
113078	HTLS-6K (Drive)	232 lbs (105 Kg)	\$4,675
113092	HTLS-6K (Kit)	359 lbs (163 Kg)	\$5,510

113078 Includes:

- Auger Drive only, mounting kit and hoses are not included.

113092 Includes:

- HTLS-6K Auger Drive (113078), Univ. SSL Mount (QT100), 1/2" x 96" Hose Kit (111385)

HTLS-7K		Imperial	Metric
Max Continuous Hydraulic Pressure		3000 PSI	207 Bar
Max Intermittent Hydraulic Pressure		3500 PSI	241 Bar
Min/Max Hydraulic Flow		10-20 GPM	37-75 LPM
Max Torque @ 3500 PSI		7767 ft-lbs	10530 Nm
Max Speed @ 20 GPM		28 RPM	
Output Shaft		2" Hex	
Dirt Auger Max Diameter		36"	914mm
Rock Auger Max Diameter		36"	914mm
Part No.	Model	Weight	List Price
113082	HTLS-7K (Drive)	236 lbs (107 Kg)	\$4,960
113093	HTLS-7K (Kit)	363 lbs (165 Kg)	\$5,790

113082 Includes:

- Auger Drive only, mounting kit and hoses are not included.

113093 Includes:

- HTLS-7K Auger Drive (113082), Univ. SSL Mount (QT100), 1/2" x 96" Hose Kit (111385)

HTLS-10K		Imperial	Metric
Max Continuous Hydraulic Pressure		3000 PSI	207 Bar
Max Intermittent Hydraulic Pressure		3500 PSI	241 Bar
Min/Max Hydraulic Flow		15-30 GPM	56-113 LPM
Max Torque @ 3500 PSI		12216 ft-lbs	3971 Nm
Max Speed @ 30 GPM		26 RPM	
Output Shaft		2-1/2" Hex	
Dirt Auger Max Diameter		48"	1219mm
Rock Auger Max Diameter		48"	1219mm
Part No.	Model	Weight	List Price
113077	HTLS-10K (Drive)	299 lbs (135Kg)	\$5,695
113094	HTLS-10K (Kit)	426 lbs (193 Kg)	\$6,530

113077 Includes:

- Auger Drive only, mounting kit and hoses are not included.

113094-Kit Includes:

- HTLS-10K Auger Drive (113077), Univ. SSL Mount (QT100), 1/2" x 96" Hose Kit (111385)

Torque and speed values are theoretical, actual performance may vary.

Belltec does not warrant the accuracy and completeness of the content listed in this publication. Belltec reserves the right to correct any errors at any time. All prices are in US Dollars - freight not included.



AUGER DRIVE ACCESSORIES | HOSE KITS

Auger Drive Kits come complete with hose kits, but when additional hoses are required, chose from the following options:



HOSE KIT | 10MB

Part No.	Description	List Price
111383	1/2" X 96" Hose Kit with 10MB Fittings	\$190

Hose kit includes two 1/2-in x 96-in hydraulic hoses fitted with 10MB hose fittings, constructed with seamless heat and oil resistant synthetic rubber tubing, and wrapped with an abrasion and weather-resistant nylon cover.

Each hose is reinforced with two braids of high tensile steel wire and has a working pressure of 4000 psi.



HOSE KIT | PIONEER [25']

Part No.	Description	List Price
111381	1/2" X 25' Hose Kit - Pioneer Fittings	\$485

Hose kit This hydraulic hose kit includes two 1/2-in x 25 feet of hydraulic hoses fitted with Pioneer style couplings, constructed with seamless heat and oil resistant synthetic rubber tubing, and wrapped with an abrasion and weather resistant nylon cover.

Each hose is reinforced with two braids of high tensile steel wire and has a working pressure of 4000 psi.



HOSE KIT | FLAT FACE COUPLERS

Part No.	Description	List Price
111385	1/2" X 96" Hose Kit with FF Couplers	\$245

Hose kit includes two 1/2-in x 96-in hydraulic hoses fitted with Faster Flat-Face Couplings, constructed with seamless heat and oil resistant synthetic rubber tubing, and wrapped with an abrasion and weather-resistant nylon cover.

Each hose is reinforced with two braids of high tensile steel wire and has a working pressure of 4000 psi.



111387



111386

HOSE KIT | SPARE PARTS

Part No.	Description	List Price
111387	Flat Face Coupler - Male (Faster)	\$45
111386	Flat Face Coupler - Female (Faster)	\$80

Couplers offer a maximum working pressure of 35Mpa with zinc finish.



HEAVYWEIGHT

Belltec offers three different heavy hitch skid loader mounts to assist your LC or H series Auger Drives power through the toughest rock conditions.

Belltec does not warrant the accuracy and completeness of the content listed in this publication. Belltec reserves the right to correct any errors at any time. All prices are in US Dollars - freight not included.



MOUNTING KITS | AUGER DRIVES



Belltec offers a wide range of equipment mounts to outfit most prime movers. Custom mounts such as excavator and backhoe loader mounts are also available upon request.



QT-200 | MINI SSL LOADER MOUNT

Part No.	Description	List Price
QT200	Universal Mini SSL Mount	\$438

- For use with mini skid loaders with the universal quick attach plate.
- Connection pin and swivel are included.

QT-100 | UNIVERSAL SSL MOUNT

Part No.	Description	List Price
QT100	Universal SSL Mount	\$585

- For use with full-size skid loaders with the universal quick attach plate.
- Connection pin and swivel are included.



QT-101 | OFFSET SSL MOUNT

Part No.	Description	List Price
QT101	Offset Universal SSL Mount	\$590

- For use with full-size skid loaders with the universal quick attach plate.
- Connection pin and swivel are included.

QT-103 | OFFSET EURO MOUNT

Part No.	Description	List Price
QT103	Offset Euro/Global Mount	\$705

- For use with machines that have the euro/global mount.
- Connection pin and swivel are included.



QT-108 | OFFSET JOHN DEERE MOUNT

Part No.	Description	List Price
QT108	Offset John Deere Mount	\$765

- For use with Deere machines (wheel loaders 200 to 500 series models)
- Connection pin and swivel are included.

LB-410 | LOADER BUCKET MOUNT

Part No.	Description	List Price
LB410	Loader Bucket Mount	\$415

- For use with Tractor and TLB machines. Bolt or welds to the front bucket.
- Connection pin and swivel are included.

Belltec does not warrant the accuracy and completeness of the content listed in this publication. Belltec reserves the right to correct any errors at any time. All prices are in US Dollars - freight not included.



MOUNTING KITS | AUGER DRIVES

PRIME MOVERS

SUPPORTED INCLUDE:



Ballasted to add 1400 lbs to increase drilling down pressure.

QT-1400 | WEIGHTED SSL MOUNT

Part No.	Description	List Price
QT1400	Ballasted Univ. SSL Mnt 1400	\$5,140

- For use with full-size skid loaders with the universal quick attach plate.
- Connection pin and swivel are included.

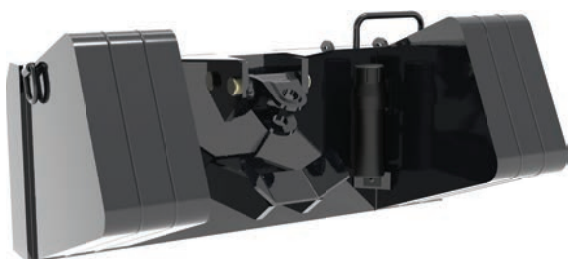


Ballasted to add 1900 lbs to increase drilling down pressure.

QT-1900 | WEIGHTED SSL MOUNT

Part No.	Description	List Price
QT1900	Ballasted Univ. SSL Mnt 1900	\$6,790

- For use with full-size skid loaders with the universal quick attach plate.
- Connection pin and swivel are included.



Ballasted to add 2400 lbs to increase drilling down pressure.

QT-2400 | WEIGHTED SSL MOUNT

Part No.	Description	List Price
QT2400	Ballasted Univ SSL Mnt 2400	\$8,230

- For use with full-size skid loaders with the universal quick attach plate.
- Connection pin and swivel are included.

Top ears are NOT included with this mount.

Machine interface ears are provided by Customer.

Professional installation is recommended.



The telescoping boom facilitates the use of longer auger bits or extensions, and it improves the operator's visibility by extending the drive out an additional 65 or 102 inches away from the cab.

Max torque rating is 6,000 ft-lbs.



QH-100 | EXCAVATOR & TBL MOUNT

Part No.	Description	List Price
QH100	Weld-On Universal Mount	\$460

- For use with compact Excavators and Tractor Loaders / Backhoes.
- Connection pin and swivel are included.

TH-100 | TELESCOPIC SSL MOUNT

Part No.	Description	List Price
TH100	Telescopic Univ. SSL Mount	\$4,115

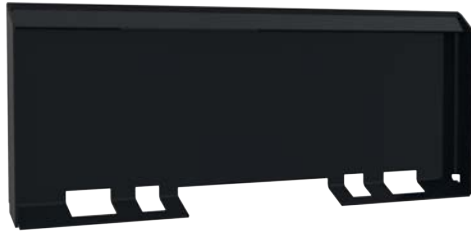
- For use with full-size skid loaders with the universal quick attach plate.
- Connection pin and swivel are included.

Belltec does not warrant the accuracy and completeness of the content listed in this publication. Belltec reserves the right to correct any errors at any time. All prices are in US Dollars - freight not included.



MOUNTING KITS | QUICK ATTACH BACK PLATES

Belltec offers two styles of blank quick attach back plates - open plate and solid plate.



SOLID BACK PLATE | FULL SIZE UNIVERSAL SSL MOUNT

Part No.	Description	List Price
117876	Universal SSL Plate 1/4" Thk Solid Back	\$195
117878	Universal SSL Plate 5/16" Thk Solid Back	\$235
117880	Universal SSL Plate 3/8" Thk Solid Back	\$260
117885	Universal SSL Plate 1/2" Thk Solid Back	\$295

- For use with skid loaders with the universal quick attach plate.
- Plate has a solid one piece back, no opening.
- Plates are unpainted.

Contact your Belltec sales representative to learn more about volume discounts for the Back Plates.

Typical Volume Discount Structure:

- 30%: Qty 1
- 35%: Qty 5 +
- 40%: Qty 10 +
- 43%: Qty 25 +
- 45%: Qty 50 +

Discount structure is the same for both styles of plates.



OPEN BACK PLATE | FULL SIZE UNIVERSAL SSL MOUNT

Part No.	Description	List Price
117877	Universal SSL Plate 1/4" Thk Open Back	\$195
117879	Universal SSL Plate 5/16" Thk Open Back	\$235
117881	Universal SSL Plate 3/8" Thk Open Back	\$260
117886	Universal SSL Plate 1/2" Thk Open Back	\$295

- For use with skid loaders with the universal quick attach plate.
- Plate has opening in the center to reduce weight.
- Plates are unpainted.



STUMP BUCKET ATTACHMENTS

Belltec Stump Buckets transform your skid-steer or compact track loader into a powerful, purpose-built tool for removing stumps, prying out rocks, and clearing debris with ease. Engineered for tough jobs and built to last, they're offered in three models to fit your exact needs.



STUMP BUCKET GENERAL PURPOSE		
Part No.	Description	List Price
117111	Stump Bucket - GP	\$1,395

The General Purpose Stump Bucket is the smallest model available, which makes it ideal for moderate digging conditions like uprooting stumps, digging, and carrying smaller loads.

- Three Replaceable Excavator-Style Teeth
- 25" wide bucket tapered down to a 13.5" profile
- 3/8" thick serrated side plates
- 39.5" deep bucket



STUMP BUCKET HEAVY DUTY		
Part No.	Description	List Price
117341	Stump Bucket - HD	\$1,695

With a longer profile and a wider bucket than the General Purpose model, the Heavy Duty Stump Bucket allows you to dig deeper and carry larger loads easily.

- Three Replaceable Excavator-Style Teeth
- 26-3/4" wide bucket tapered down to 13.5" profile
- 1/2" thick serrated side plates
- 56.5" deep bucket



STUMP BUCKET SEVERE DUTY		
Part No.	Description	List Price
117147	Stump Bucket - SD	\$1,995

The Severe Duty model is our most aggressive design featuring a 4" x 4" steel backplate and serrated side plates constructed out of AR400 steel so you can tackle the most challenging conditions confidently.

- Three Replaceable Excavator-Style Teeth
- 26-3/4" wide bucket tapered down to 13.5" profile
- 4" x 4" steel tube frame
- 1/2" thick AR400/500 serrated side plates
- 56.5" deep bucket



Belltec does not warrant the accuracy and completeness of the content listed in this publication. Belltec reserves the right to correct any errors at any time. All prices are in US Dollars - freight not included.

HP SERIES | POST DRIVER ATTACHMENTS

The HP Series delivers powerful performance across a wide range of post-driving applications. Powered by a nitrogen power cell, this rugged attachment is low-maintenance and long-lasting. Available in three models, the HP Series maximizes machine efficiency and job site productivity.

The HP Series is highly adaptable, designed to drive both wood and steel posts with ease.



RECOMMENDED PRIME MOVERS



HP-350	Imperial	Metric
Energy Class	350 ft. lb	475 Joule
Min Hydraulic Pressure	1300 PSI	89 Bar
Max Hydraulic Pressure	1500 PSI	103 Bar
Required Hydraulic Flow	5 - 18 GPM	19 - 68 LPM
Nitrogen Pressure	230 PSI	16 Bar
Drive Tool Shank Diameter	1.95"	49.5mm
Blow Count / Minute	700 - 1200	
Prime Mover Weight Class	1 - 3 T	
Weight - Skid Loader Configuration	-	
Weight - Excavator Configuration	-	
Model	Part No.	List Price
HP350 w/ Univ. MTL Mount	-	N/A
HP350 w/ MT Bobcat Mount	-	N/A
HP350 w/ Univ. MTL Tele-Side Mnt	-	N/A
HP350 w/ MT Bobcat Tele-Side Mnt	-	N/A
HP-350 w/ Univ. SSL Mount	-	N/A
HP-350 w/ Univ. SSL Tele-Side Mnt	-	N/A
HP-350 w/ X-Change Mount	-	N/A

HP-750	Imperial	Metric
Energy Class	750 ft. lb	1016 Joule
Min Hydraulic Pressure	2000 PSI	138 Bar
Max Hydraulic Pressure	3000 PSI	207 Bar
Required Hydraulic Flow	11-18 GPM	41-68 LPM
Nitrogen Pressure	230 PSI	16 Bar
Drive Tool Shank Diameter	2.7"	68.5mm
Blow Count / Minute	500 - 900	
Prime Mover Weight Class	4 - 6 T	
Weight - Skid Loader Configuration	1236 lbs	573 Kg
Weight - Excavator Configuration	800 lbs	363 Kg
Model	Part No.	List Price
HP-750 w/ Excavator Mount (Blank)	-	N/A
HP-750 w/ Univ. SSL Mount	801001	\$7,200

HP-1200	Imperial	Metric
Energy Class	1200 ft. lb	1627 Joule
Min Hydraulic Pressure	2200 PSI	150 Bar
Max Hydraulic Pressure	3500 PSI	240 Bar
Required Hydraulic Flow	13-24 GPM	50-90 LPM
Nitrogen Pressure	230 PSI	16 Bar
Drive Tool Shank Diameter	3"	75mm
Blow Count / Minute	400 - 800	
Prime Mover Weight Class	6 - 9 T	
Weight - Skid Loader Configuration	-	-
Weight - Excavator Configuration	-	-
Model	Part No.	List Price
HP-1200 w/Excavator Mount (Blank)	-	N/A
HP-1200 w/ Univ. SSL Mount	-	N/A

Each Unit Includes:

- Power cell assy with selected mounting kit
- 1/2" Hose Kit with flat face couplers
- One Drive Tool (type and size varies depending on model)
- Post Setting/Pulling Chain
- Toolbox (301405) Includes:
 - Nitrogen Charging Kit,
 - Combo Wrenches (set of 4),
 - Tool Pin Punch, and
 - Top-Bolt Hammer Wrench

Belltec does not warrant the accuracy and completeness of the content listed in this publication. Belltec reserves the right to correct any errors at any time. All prices are in US Dollars - freight not included.



HP SERIES | DRIVE TOOLS

Belltec offers a wide range of Drive Tools to outfit the three HP Series models.

HP SERIES DRIVE TOOLS		Part No.	Description	List Price	Weight	Size (inch)	Shank Dia	Tool ID
	UNDERSIZE FLAT CUP DRIVE TOOLS							
	301325	HP750 US Flat Drive Tool	\$450	60 lbs	6x6x17	2.7"	7"	
	302220	HP1200 US Flat Drive Tool	\$450	69 lbs	9x9x17	3.0"	8"	
	UNDERSIZE DOME CUP DRIVE TOOLS							
	301322	HP750 US Dome Drive Tool	\$450	40 lbs	6x6x17	2.7"	5"	
	302221	HP1200 US Dome Drive Tool	\$450	44 lbs	6x6x17	3.0"	5"	
	STANDARD FLAT CUP DRIVE TOOLS							
	301326	HP750 Std Flat Drive Tool	\$550	60 lbs	8x8x17	2.7"	7"	
	302216	HP1200 Std Flat Drive Tool	\$600	69 lbs	9x9x17	3.0"	8"	
	STANDARD DOME CUP DRIVE TOOLS							
	301801	HP350 Std Dome Drive Tool	\$100	8 lbs	5x5x5	1.95"	4.38"	
	301323	HP750 Std Dome Drive Tool	\$550	53 lbs	8x8x17	2.7"	7"	
	302217	HP1200 Std Dome Drive Tool	\$600	69 lbs	9x9x17	3.0"	8"	
	OVERSIZE FLAT CUP DRIVE TOOLS							
	301327	HP750 OS Flat Drive Tool	\$650	69 lbs	9x9x17	2.7"	8"	
	302218	HP1200 OS Flat Drive Tool	\$750	84 lbs	10x10x17	3.0"	9.5"	
	302222	HP1200 OS Railroad Tool	\$850	84 lbs	12x12x17	3.0"	11"	
	OVERSIZE DOME CUP DRIVE TOOLS							
	301324	HP750 OS Dome Drive Tool	\$650	63 lbs	9x9x17	2.7"	8"	
	302219	HP1200 OS Dome Drive Tool	\$750	88 lbs	10x10x17	3.0"	9.5"	
	STANDARD ROCK SPIKE DRIVE TOOLS							
	301328	HP750 Rock Spike Tool	\$450	42 lbs	48" Long	2.7"	-	
	302223	HP1200 Rock Spike Tool	\$450	42 lbs	48" Long	3.0"	-	
	CONCRETE CONICAL (MOIL) DRIVE TOOLS							
	301329	HP750 Conical Tool	\$250	38 lbs	28" Long	2.7"	-	
	302224	HP1200 Conical Tool	\$275	50 lbs	30" Long	3.0"	-	
	CONCRETE CHISEL [V-WEDGE] DRIVE TOOLS							
	301330	HP750 V-Wedge Tool	\$250	38 lbs	28" Long	2.7"	-	
	302225	HP1200 V-Wedge Tool	\$275	50 lbs	30" Long	3.0"	-	
	CONCRETE CHISEL [H-WEDGE] DRIVE TOOLS							
	301331	HP750 H-Wedge Tool	\$250	38 lbs	28" Long	2.7"	-	
	302226	HP1200 H-Wedge Tool	\$275	50 lbs	30" Long	3.0"	-	



All Drive Tools have a one year limited warranty.

Belltec does not warrant the accuracy and completeness of the content listed in this publication. Belltec reserves the right to correct any errors at any time. All prices are in US Dollars - freight not included.



HP SERIES | SPARE PARTS

POST DRIVER ATTACHMENT

HP350 SPARE PARTS		
Part No.	Description	List Price
301405	Tool Kit HP Series (complete tool box)	\$165.00
-	Though Bolt HP350	N/A
-	Seal Kit HP350	N/A
-	Pin Locking Tool HP350	N/A
-	Pin Stop HP350 (Tool Pin)	N/A
301454	Air Valve HP Series	\$4.00
301455	Valve Nitro Charging HP Series	\$19.00
-	Valve Main HP350	N/A

HP750 & HP1200 SPARE PARTS		
Part No.	Description	List Price
301405	Tool Kit HP Series (complete tool box)	\$165.00
301450	Though Bolt HP750	\$56.00
301451	Seal Kit HP750	\$153.00
301452	Pin Locking Tool HP750	\$20.00
301453	Pin Stop HP750 (Tool Pin)	\$5.00
301454	Air Valve HP Series	\$4.00
301455	Valve Nitro Charging HP Series	\$19.00
301456	Valve Main HP750	\$59.00



Belltec does not warrant the accuracy and completeness of the content listed in this publication. Belltec reserves the right to correct any errors at any time. All prices are in US Dollars - freight not included.



TM-48 DIGGER TRACTOR ATTACHMENT

For more than 30 years, the legendary TM-48 Belltec Digger has been the trusted choice for tractor owners needing to dig post holes with speed and precision.

The TM-48 securely mounts to any three-point tractor with over 28 horsepower. The unique system turns your tractor into a high-performance drilling rig—capable of drilling straight, accurate holes up to 60” deep with a single auger, even through tough materials like solid rock and concrete.

TM-48 models are compatible with category 1, 2, and 3 hitch systems.

TM-48 DIGGER CATEGORY ONE		
Part No.	Description	List Price
TM48 HTL-C1	TM-48 Digger Category 1	\$7,295
TM48 HTL-GRS-C1	TM-48 Digger Category 1 w/Leveling Cylinders	\$7,995

TM-48 DIGGER CATEGORY TWO		
Part No.	Description	List Price
TM48 HTL-C2	TM-48 Digger Category 2	\$7,295
TM48 HTL-GRS-C2	TM-48 Digger Category 2 w/Leveling Cylinders	\$7,995
100320	Category 2 Hitch Spacer Kit	\$208

TM-48 DIGGER CATEGORY THREE		
Part No.	Description	List Price
TM48 HTL-C3	TM-48 Digger Category 3	\$7,295
TM48 HTL-GRS-C3	TM-48 Digger Category 3 w/Leveling Cylinders	\$7,995



SSA SERIES DIRT AUGERS		
Diameter	Part No.	List Price
6" (152mm)	A06010	\$940
8" (203mm)	A08010	\$1,026
9" (228mm)	A09010	\$1,060
10" (254mm)	A10010	\$1,070
12" (305mm)	A12010	\$1,215
15" (381mm)	A15010	\$1,430
18" (457mm)	A18010	\$1,630

RAD SERIES ROCK AUGERS		
Diameter	Part No.	List Price
8" (203mm)	A08006	\$1,095
9" (228mm)	A09006	\$1,195
10" (254mm)	A10006	\$1,295
12" (305mm)	A12006	\$1,395
15" (381mm)	A15006	\$1,595
18" (457mm)	A18006	\$1,895

SPIRAL SERIES ROCK AUGERS		
Diameter	Part No.	List Price
9" (228mm)	A09040	\$1,415
12" (305mm)	A12040	\$1,985
15" (381mm)	A15040	\$2,550
18" (457mm)	A18040	\$3,120

SRA SERIES CLUSTER HEAD		
Diameter	Part No.	List Price
6" (152mm)	A06016	\$880
9" (228mm)	A09016	\$1,065

PUFF SERIES CARBIDE AUGERS		
Diameter	Part No.	List Price
2" (50mm)	A02005	\$490



TM-48 and Auger Bits

Belltec does not warrant the accuracy and completeness of the content listed in this publication. Belltec reserves the right to correct any errors at any time. All prices are in US Dollars - freight not included.



UTILITY TOOLING

Belltec's Utility Auger Tools are built to perform in the toughest drilling conditions. Recent upgrades include a recessed hub connection for added stability, high-yield center shafts, and heat-treated cast heads and shank plates deliver enhanced strength and durability where it matters most.

With a wide range of flight lengths, diameters, and head configurations, Belltec offers custom auger solutions tailored to your exact drilling needs.

Contact your Belltec sales representative to learn more about the Utility Tools.



FOUNDATION TOOLING

Belltec builds tough and reliable drilling tools that deliver when it counts. From Augers and Core Barrels to premium accessories and supplies, our equipment is designed to perform in the most demanding drilling environments, offering strength, efficiency, and durability.

We support your operation beyond the sale, offering service and repairs for all brands, along with a full inventory of parts to keep you running with minimal downtime.

Contact your Belltec sales representative to learn more about the wide offering of Tools.



Belltec does not warrant the accuracy and completeness of the content listed in this publication. Belltec reserves the right to correct any errors at any time. All prices are in US Dollars - freight not included.



WARRANTY POLICY

BELLTEC GENERAL PRODUCT LIMITED WARRANTY

Belltec warrants its products to be free from defects in materials and workmanship for ONE YEAR from the original purchase date. Extended coverage applies to certain product groups as outlined in this policy. This warranty does not cover misuse, accidents, unauthorized modifications, non-Belltec parts, or normal wear items such as auger teeth, pilot bits, chains, bearings, drive tools, and blades.

To make a claim, return the COMPLETE product, freight prepaid by user, for inspection. If the issue is confirmed to be a defect in materials or workmanship, Belltec will, at its discretion, repair, modify, or replace the product at no charge.

LIMITATIONS OF RESPONSIBILITY

This warranty replaces all other warranties, expressed or implied, and excludes merchantability or fitness for a particular purpose. Belltec is not liable for special or consequential damages, transportation costs, or damage to prime mover equipment. Liability will not exceed the purchase price of the product. Unauthorized repairs or parts, as well as operation outside recommended procedures, void the warranty.

This warranty is void if repairs or disassembly of hydraulic motors, gearboxes, or controls are performed without written approval. The COMPLETE product must be returned in its original, allegedly failed condition for inspection. Belltec reserves the right to update designs or specifications at any time without obligation.

WARRANTY PROCEDURE

Upon notification of a problem/failure on a component, please advise a Belltec associate of the following:

1. Part number and serial number of the attachment.
2. Description of specific component failure.
3. Details of the prime mover the attachment is being used on:
- *machine type, make, and model, and hydraulic system specifications.*
4. Comments pertaining to issue and or failure.

If a defective product/component is deemed necessary to be returned to Belltec, a Return Materials Authorization (RMA) number will be issued. All shipping documents MUST show this RMA number. Return the complete unit (freight prepaid by user) to Belltec for inspection and repair. If the problem is confirmed to be a manufacturing defect, Belltec will, at its option, repair, modify, or replace the unit at no charge.

PRODUCT SPECIFIC EXTENDED WARRANTY

Hydraulic Auger Drive Attachments Limited Warranty - Belltec warrants every Hydraulic Auger Drive Attachment against defects in materials and workmanship per the period outlined below by series from the original purchase date. If an issue occurs, return the complete unit (freight prepaid by user) to Belltec for inspection and repair. If the problem is confirmed to be a manufacturing defect, Belltec will, at its option, repair, modify, or replace the unit at no charge.

- MC-Series Hydraulic Auger Drive: 3-Year Limited Warranty
- LC-Series Hydraulic Auger Drive: 5-Year Limited Warranty
- M-Series Hydraulic Auger Drive: 5-Year Limited Warranty
- H-Series Hydraulic Auger Drive: 6-Year Limited Warranty
- H-Series Replaceable Output Shaft: Lifetime Limited Warranty
- HTLS-Series Hydraulic Auger Drive: 3-Year Limited Warranty

Belltec does not warrant the accuracy and completeness of the content listed in this publication. Belltec reserves the right to correct any errors at any time. All prices are in US Dollars - freight not included.



Belltec Industries Inc.

2057 Commerce Street

Belton, Texas 76513

800.242.9410 | belltec.net | sales@belltec.net

© 2026 Belltec Industries Inc. All Rights Reserved