

# *Mighty·Minis*

## Mini Skidsteer Attachments



[hlaattachments.com](http://hlaattachments.com)



# Attachments for Mini Skidsteers

Mighty Minis is HLA's answer to the increased demand for versatility in smaller power units. An extension of HLA's durable line of attachments, Mighty Minis uses the same engineering principals to ensure you get the efficiency and results your customers expect regardless of the power unit size.

Mighty Minis have all the capability of the larger models in a smaller package.

For more information visit us online or contact your local dealer.

**Series 2**






hlaattachments.com

**Compact**

- High dump height up to 28"
- Exclusive design for easy use
- 28" dump height
- Soft grip handles
- Drilled for easy attachment
- Available in multiple colors



**Mighty • Minis**



Part Number	Inside Width	Struck Capacity (cu yd)
HR3C36	36"	5.3
HR3C42	42"	6.4
HR3C48	48"	7.4
HR3C54	54"	8.4
HR3C60	60"	9.5

**SEE THEM ALL!**



Compact Brush Grapple



Adaptors . . . . . 6

Weld on Kits . . . . . 7

Trailer Hitch 2" Receiver . . . . . 8

Pallet Forks . . . . . 9

Bucket Pallet Fork . . . . . 12

Single Arm Log Grapple . . . . . 13

Options for Hydraulic Attachments . . . . . 14

Compact Utility Bucket . . . . . 15

Compact Utility Bucket w/ Grapple . . . . . 16

Compact Low Profile Bucket. . . . . 17

High Reach Bucket. . . . . 18

Bucket Accessories (Edges & Toothbars) . . . . . 19

Stone Fork (Retainer Style) . . . . . 21

Stone Fork (Retainer Style) w/ Grapple . . . . . 22

Compact Utility Grapple (weld on). . . . . 23

Compact Scrap Grapple Bucket . . . . . 24

Light Duty Root Rake w/ Grapple . . . . . 25

Compact Brush Grapple . . . . . 26



1000 Series Snow Blade . . . . .	28
2000 Series Snow Blade . . . . .	29
1500 Series Snow Pusher . . . . .	30
1500 Series Turf Snow Pusher . . . . .	31
1800 Series Snow Pusher . . . . .	32
V-Blade . . . . .	33

This attachment catalogue is for quick product reference, and may not contain all features and options available.

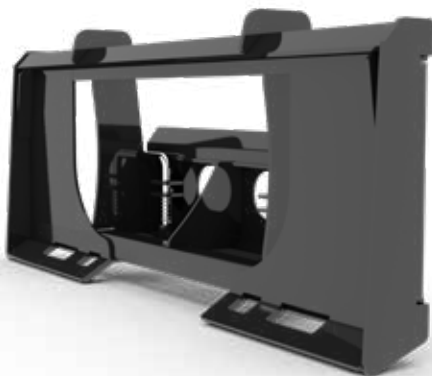
For more detail and complete listing of features and options available see your dealer or visit [www.hlaattachments.com](http://www.hlaattachments.com)



PICTURED: BOQF10RR880

### **BOQF10RR880**

- Regular duty universal skidsteer plate to fit CII quick attach
- 3,500 lb. capacity
- Compatible to universal skidsteer attachments
- Spring-loaded over-centre lever lock



PICTURED: ADRR800B0500

### **ADRR800B0500**

- Allows use of CII attachments with universal skidsteer carrier
- 2,000 lb. capacity
- Spring-loaded lock pin



PICTURED: WOKB0463

## **Bobcat Compact Quick Attach Weld-On-Kit**



PICTURED: WOKRR800

## **WOKRR800**

- CII Weld-on kit



PICTURED: TH2

## Trailer Hitch 2" Receiver

- 2" Receiver
- Ideal for moving light trailers around the yard
- Ball mount hitch on top of frame for moving goose neck trailers
- Max gross trailer weight: 9,000 lb.
- Max tongue weight: 800 lb.
- Approx. weight: 165 lb.

Part Number	Description	Weight
TH2	Trailer Hitch 2" Receiver	165 lbs



PICTURED: HD0936

## **Light Duty Pallet Fork (900 lbs.)**

- 1-3/16" x 3-1/8" Class II hook type solid fork lift tines
- 36", 42", or 48" tine lengths
- 900 lb. capacity @ 21" L.C.
- Sliding adjustable
- Tines can be locked in any position
- Carriage width 32" - 50"

<b>Part Number</b>	<b>Description</b>	<b>Tine Length</b>	<b>Weight</b>
HD0936	Light Duty Pallet Fork c/w Tines	36"	190 lbs
HD0942	Light Duty Pallet Fork c/w Tines	42"	205 lbs
HD0948	Light Duty Pallet Fork c/w Tines	48"	215 lbs
HD09	Carriage Only Less Tines		



PICTURED: HD1242

### Light Duty Pallet Fork (1,200 lbs.)

- 1-3/16" x 3 1/8" Class II hook type solid fork lift tines
- 36", 42", or 48" tine lengths
- 1,200 lb. capacity @ 24" L.C.
- Sliding adjustable
- Tines can be locked in any position
- Carriage width 32" - 50"

Part Number	Description	Tine Length	Weight
HD1236	Light Duty Pallet Fork c/w Tines	36"	285 lbs
HD1242	Light Duty Pallet Fork c/w Tines	42"	315 lbs
HD1248	Light Duty Pallet Fork c/w Tines	48"	325 lbs
HD12	Carriage Only Less Tines		

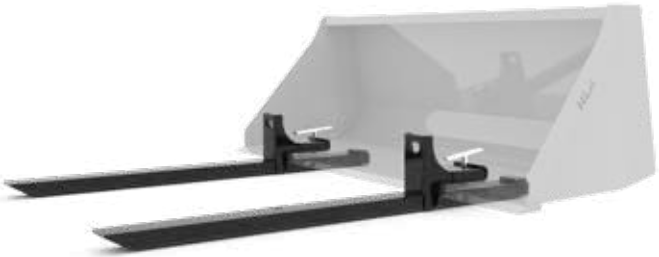


PICTURED: HD2036

## **Light Duty Pallet Fork (2,000 lbs.)**

- 1½" x 3 1/8" Class II hook type solid fork lift tines
- 2000 lbs capacity @ 24" L.C.
- C/w guard
- Carriage width 32" - 50"

<b>Part Number</b>	<b>Description</b>	<b>Tine Length</b>	<b>Weight</b>
HD2036	Light Duty Pallet Fork c/w Tines	36"	310 lbs
HD2042	Light Duty Pallet Fork c/w Tines	42"	340 lbs
HD2048	Light Duty Pallet Fork c/w Tines	48"	350 lbs
HD20	Carriage Only c/w Guard Less Tines		



PICTURED: BFT6544 (bucket not included)

## **Bucket Pallet Fork**

- Adaptable to most buckets
- No tools or bolts needed
- 1,000 lb. capacity (3" x 2" x 32" long)
- 2,000 lb. capacity (4" x 2" x 44" long)

<b>Part Number</b>	<b>Description</b>	<b>Size</b>	<b>Weight</b>
BFT3532	1000 Lb. Bucket Pallet Fork	3" x 2" x 32" Usable length	78 lbs (set)
BFT6544	2000 Lb. Bucket Pallet Fork	4" x 2" x 44" Usable length	143 lbs (set)



PICTURED: LGSA

## Single Arm Log Grapple

- Removable log grapple for pallet forks
- Clamps onto Class II fork frame (walk through guards only)
- C/w Hydraulic cylinder

Part Number	Description	Weight
LGSA	Single Arm Log Grapple To Fit Class II Rail (HD12, HD20)	195 lbs

## Hydraulic Attachment Options

The following options help to ensure the best placement of your hydraulic lines for your hydraulic powered attachments.

The HK90 90” hose is ideal for most loader applications and is available with either straight or 90° flat faced couplers.

The spring hose mount kit holds your hydraulic line keeping it away from pinch points.

Part Number	Description
HK90	Optional 90" Hose Kit c/w Flat Faced Couplers
HK9090	Optional 90" Hose Kit c/w 90° Flat Faced Couplers
SHMK	Optional Spring Hose Mount Kit



PICTURED: SBC60

## Compact Utility Bucket

- 1/8" material, 3/16" end plates
- 1/2 x 4 bevelled cutting edge
- 21" deep, 18" high
- 65° slope on back of bucket
- Reinforced round back and end plates for strength, easy filling & clean out
- Flat top acts as level indicator
- Drilled for standard bolt on cutting edge

Part Number	Inside Width (in.)	Struck Capacity (cu. ft.)	SAE Heaped Capacity (cu. ft.)	Weight
SBC36	36"	4.3	5.3	210 lbs
SBC42	42"	4.9	6.1	230 lbs
SBC48	48"	5.7	7.2	245 lbs
SBC54	54"	6.4	8.1	260 lbs
SBC60	60"	7.1	9.0	275 lbs
SBC66	66"	7.8	10.0	285 lbs



PICTURED: SBC48GRC48

## Compact Utility Bucket w/ Grapple

- Bucket specifications are the same as SBC Compact Utility Buckets
- Heavy duty welded cylinder
- Opens up to 37.5”

Part Number	Description	Weight
SBC36GRC36	SBC36 Bucket w/ GRC36 Grapple	325 lbs
SBC42GRC42	SBC42 Bucket w/ GRC42 Grapple	360 lbs
SBC48GRC48	SBC48 Bucket w/ GRC48 Grapple	380 lbs
SBC54GRC48	SBC54 Bucket w/ GRC48 Grapple	400 lbs
SBC60GRC48	SBC60 Bucket w/ GRC48 Grapple	420 lbs



PICTURED: SBC481828

## Compact Low Profile Bucket

- 1/8" material, 3/16" end plates
- 1/2 x 4 bevelled cutting edge
- 26" deep, 17" high
- 65° slope on back of bucket
- Reinforced round back and end plates for strength, easy filling & clean out
- Longer base enables operator to see cutting edge of bucket
- Flat top acts as level indicator
- Drilled for standard bolt on cutting edge

Part Number	Inside Width (in.)	Struck Capacity (cu. ft.)	SAE Heaped Capacity (cu. ft.)	Weight
SBC361828	36"	4.9	6.0	180 lbs
SBC421828	42"	5.6	7.1	220 lbs
SBC481828	48"	6.5	8.2	240 lbs
SBC541828	54"	7.3	9.2	255 lbs
SBC601828	60"	8.1	10.3	270 lbs

## High Dump Bucket



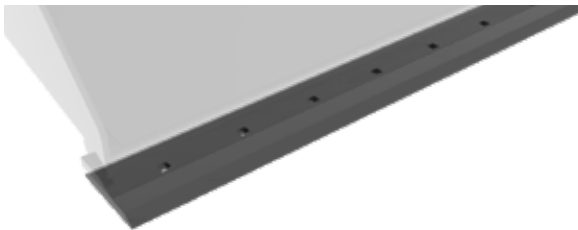
PICTURED: HRBC60

## High Dump Bucket

- High dump bucket increases dump out height up to 30"
- Exclusive flat bottom bucket design allows for easier clean out & no capacity sacrifice
- 28" deep, 21" high
- Soft stop cylinder for reduced vibration
- Drilled for standard bolt on cutting edge

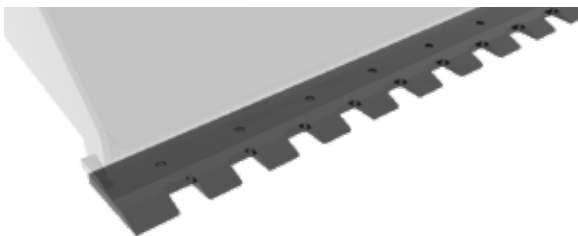
Part Number	Inside Width	Struck Capacity (cu. ft.)	SAE Heaped Capacity (cu. ft.)	Weight
HRBC36	36"	5.3	6.7	530 lbs
HRBC42	42"	6.4	8.2	565 lbs
HRBC48	48"	7.4	9.6	595 lbs
HRBC54	54"	8.4	11	625 lbs
HRBC60	60"	9.5	12.5	655 lbs

## **3/4 x 6 Double Bevel Bolt-On Cutting Edge c/w Bolts & Nuts**



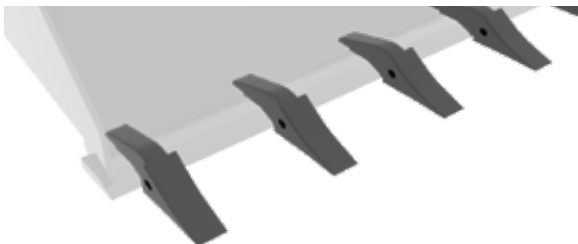
PICTURED: 346CEB

## **3/4 x 6 Single Bevel Serrated Bolt-On Cutting Edge c/w Bolts & Nuts**



PICTURED: 346CESB

## **Knock On Ripper Teeth c/w Weld-On Adapter & Flex Pin**



PICTURED: RTMBK

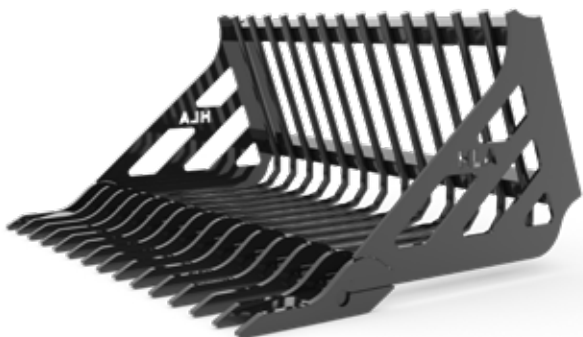


PICTURED: TBC60 (bucket not included)

## Tooth Bar Bolt-On

- Designed to fit HLA compact buckets (straight sided buckets)
- Easy to remove replaceable teeth

Part Number	Outside Width	Fit Buckets w/ Inside Width	Teeth Qty.	Weight
TBC36	35- <sup>3</sup> / <sub>4</sub> "	36"	5	43 lbs
TBC42	41- <sup>3</sup> / <sub>4</sub> "	42"	5	47 lbs
TBC48	47- <sup>3</sup> / <sub>4</sub> "	48"	5	53 lbs
TBC54	53- <sup>3</sup> / <sub>4</sub> "	54"	5	58 lbs
TBC60	59- <sup>3</sup> / <sub>4</sub> "	60"	6	70 lbs



PICTURED: SFRC48

## Stone Fork (Retainer Style Tine) Compact Duty

- 1" shaft diameter
- 2 1/2" spacing between tines
- Points are 5/8" thick, 400 Brinell high strength steel
- 23" high
- 35" deep
- 2,000 lb. capacity

Part Number	Description	Weight
SFRC38	38" Stone Fork Retainer Tine Compact Duty	320 lbs
SFRC42	42" Stone Fork Retainer Tine Compact Duty	345 lbs
SFRC48	48" Stone Fork Retainer Tine Compact Duty	410 lbs
SFRC55	55" Stone Fork Retainer Tine Compact Duty	450 lbs



PICTURED: SFRC55

## Stone Fork (Retainer Style Tine) Compact Duty w/ Grapple

- Stone fork Specifications same as SFRC
- Compact Duty Stone Fork
- Overall height 28"
- Heavy duty welded cylinder
- Opens to 33.5"

Part Number	Description	Weight
SFRC38GRC36	38" Stone Fork Retainer Tine Compact Duty w/GRC36 Grapple	410 lbs
SFRC42GRC36	42" Stone Fork Retainer Tine Compact Duty w/GRC36 Grapple	450 lbs
SFRC48GRC42	48" Stone Fork Retainer Tine Compact Duty w/GRC42	520 lbs
SFRC55GRC48	55" Stone Fork Retainer Tine Compact Duty w/GRC48	600 lbs



PICTURED: GRC42 (fork not included)

## Compact Utility Grapple

- To be fitted on SBC models
- Comes with heavy duty welded cylinder
- Opens up to 37-½"

Part Number	Description	Width	Weight
GRC36	36" Grapple Only To Fit 36" Bucket c/w Cylinder	36"	122 lbs
GRC42	42" Grapple Only To Fit 42" Bucket c/w Cylinder	42"	129 lbs
GRC48	48" Grapple Only To Fit 48" Bucket c/w Cylinder	48"	136 lbs



PICTURED: SGBC48

## Compact Scrap Grapple Bucket

- 3/16" material, 1/4" end plates
- 3/4 X 4 bevelled cutting edge
- Single grapple arm
- 26" overall height
- 26" overall depth
- Opens to 36"
- Comes with 2½" x 8" cylinder
- Drilled for standard bolt on cutting edge

Part Number	Inside Width	Struck Capacity (cu. ft.)	SAE Heaped Capacity (cu. ft.)	Weight
SGBC36	36"	5.4	6.9	440 lbs
SGBC42	42"	6.3	8.0	445 lbs
SGBC48	48"	7.2	9.2	450 lbs
SGBC54	54"	8.1	10.4	465 lbs
SGBC60	60"	9.0	11.6	480 lbs

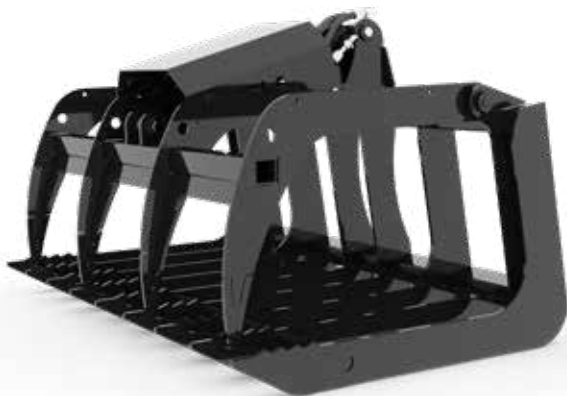


PICTURED: RRGLD48

## Light Duty Root Rake c/w Grapple

- Light weight with rugged design for compact loaders
- 28" overall height when closed
- 7-3/8" centre to centre tine spacing
- Points are 1/2" thick, AR400 material
- Opens up to 33-1/2"
- Comes with 2-1/2"x 8" cylinder

Part Number	Description	Weight
RRGLD42	42" Light Duty Root Rake c/w Hydraulic Grapple	350 lbs
RRGLD48	48" Light Duty Root Rake c/w Hydraulic Grapple	365 lbs
RRGLD54	54" Light Duty Root Rake c/w Hydraulic Grapple	380 lbs
RRGLD60	60" Light Duty Root Rake c/w Hydraulic Grapple	405 lbs
RRGLD66	66" Light Duty Root Rake c/w Hydraulic Grapple	425 lbs



PICTURED: BRGC54

## Compact Brush Grapple

- Opens to 38" wide from ground to point of grapple
- Tine tips and grapple tips are AR400 material
- Tine spacing 6" on center
- Single grapple arm
- 28" overall height
- 33" overall depth
- Comes with 2-1/2" x 8" cylinder

Part Number	Description	Weight
BRGC36	36" Compact Brush Grapple	375 lbs
BRGC42	42" Compact Brush Grapple	390 lbs
BRGC48	48" Compact Brush Grapple	405 lbs
BRGC54	54" Compact Brush Grapple	420 lbs
BRGC60	60" Compact Brush Grapple	440 lbs
BRGC66	66" Compact Brush Grapple	455 lbs



## **Snow Equipment**

Combine your mini skidsteer or walk behind with with our 1000 and 2000 series snow tools. Engineered with the same standards as our larger models, they are matched to the suitable operating weight of the power unit ensuring the ideal balance and operating efficiency.

Contact your dealer or the HLA office for more information on matching your power unit to an HLA Snow blade, pusher, or V-blade.



PICTURED: SB100060

## 1000 Series Snow Blade

- Spring trip on mouldboard
- 20" high mouldboard
- Lateral float
- 35° manual angle either direction (hydraulic optional)
- Replaceable, reversible steel cutting edge
- Replaceable, reversible rubber cutting edge (Optional)
- Adjustable skid shoes

Part Number	Weight	Blade Width	Max. Operating Weight
SB100042	355 lbs	42"	3,000 lbs
SB100048	365 lbs	48"	3,000 lbs
SB100054	375 lbs	54"	3,000 lbs
SB100060	385 lbs	60"	3,000 lbs
SB100066	400 lbs	66"	3,000 lbs
SB100072	410 lbs	72"	3,000 lbs
SB100078	420 lbs	78"	3,000 lbs
SB100084	440 lbs	84"	3,000 lbs
SB100090	450 lbs	90"	3,000 lbs
SB100096	465 lbs	96"	3,000 lbs



PICTURED: SB200072

## 2000 Series Snow Blade

- Spring trip on mouldboard
- 24" high mouldboard
- Lateral float
- Hydraulic 35° angle either direction
- Replaceable, reversible steel cutting edge
- Replaceable, reversible rubber cutting edge (Optional)
- Adjustable skid shoes
- Cross-over relief valve protection

Part Number	Weight	Blade Width	Max. Operating Weight
SB200060	550 lbs	60"	5,000 lbs
SB200072	575 lbs	72"	5,000 lbs
SB200078	595 lbs	78"	5,000 lbs
SB200084	610 lbs	84"	5,000 lbs
SB200090	620 lbs	90"	5,000 lbs
SB200096	635 lbs	96"	5,000 lbs



PICTURED: SP150060

## 1500 Series Snow Pusher

- Double sidewall, slim brace design for reduced material build-up
- Bucket edge mount or Qtach available
- 20 " high mouldboard
- 18" deep fixed end plates
- Replaceable, reversible cutting edge
- Adjustable/ replaceable skid bars
- Available in rubber edge models
- Bolt-on attachment frame has 3 angle settings (80°, 90°, 100°)
- Optional back drag kit available for all models

Part Number	Weight	Blade Width	Max. Operating Weight
SP150048	185 lbs	48"	3,000 lbs
SP150054	195 lbs	54"	3,000 lbs
SP150060	205 lbs	60"	3,000 lbs
SP150066	220 lbs	66"	3,000 lbs
SP150072	230 lbs	72"	3,000 lbs



PICTURED: SP1500T54

## 1500 Series Turf Snow Pusher

- Smooth contact edge is ideal for clearing snow from turf sports fields
- Smooth round pipe replaces the cutting edge and runner
- Bucket edge mount or QTach available

Part Number	Weight	Blade Width	Max. Operating Weight
SP1500T48LF	185 lbs	48"	3,000 lbs
SP1500T54LF	195 lbs	54"	3,000 lbs
SP1500T60LF	205 lbs	60"	3,000 lbs
SP1500T66LF	220 lbs	66"	3,000 lbs
SP1500T72LF	230 lbs	72"	3,000 lbs



PICTURED: SP180060

## 1800 Series Snow Pusher

- Double sidewall, slim brace design for reduced material build-up
- Bucket edge mount or Qtach available
- 24" high mouldboard
- 21" deep fixed end plates
- Replaceable, reversible steel cutting edge
- Adjustable/ replaceable skid bars
- Available in rubber edge models
- Bolt-on attachment frame has 3 angle settings (80°, 90°, 100°)
- Optional back drag kit available for all models

Part Number	Weight	Blade Width	Max. Operating Weight
SP180060	470 lbs	60"	4,000 lbs
SP180072	510 lbs	72"	4,000 lbs
SP180084	555 lbs	84"	4,000 lbs
SP150072	230 lbs	72"	3,000 lbs



PICTURED: VP48

## V-Blade

- Replaceable 5/8" AR400 cutting edge
- QTach or direct fit to accept most makes of loaders
- 24" high mouldboard
- Sliding hinge allows blade to follow contour of surface
- Optional 6" side flares available
- Approx. weight: 560 lb. (60" w/ flares)
- Includes abrasion and wear-resistant AR400 nose and skid shoes

Part Number	Clearing Width	Weight	Mouldboard Height	Max. Operating Weight
VP48	48"	500 lbs	24"	10,000 lbs
VP54	54"	520 lbs	24"	10,000 lbs
VP60	60"	545 lbs	24"	10,000 lbs







**Righty Mini**



Tel. (519) 291-4162 | Toll Free (866) 567-4162

[www.hlaattachments.com](http://www.hlaattachments.com)