



“Good enough won’t do - it must be right.” - K.B. Danuser, Founder 1910

DRIVE LIKE A PRO...

...EVEN ON YOUR OWN

The Hornet is a quick and powerful post driver, featuring a jackhammer-style power cell for controlled, high-speed performance. Its hydraulic grapple enables one-person operation, making it a versatile all-in-one solution for post installation.

Standard flow control valve allows for use on a wider range of hydraulic systems, including high-flow machines, without accelerated wear on the driver. Additional weight kit option (skid-steer models only) helps fine tune the weight of the driver to match the operating capacity of the vehicle and increases driving speed up to 50%.

- 🔧 Tilt option allows 20° tilt left or right
- 🔧 Choose a domed, flat, or railroad tie flat (T8-RR only) driving tool
- 🔧 Tool-less quick change eliminates the need for hammer and punch when changing driving tools
- 🔧 Skid-steer mounted machine includes a post holder frame with tie down for transporting posts/pipe
- 🔧 1-Year Warranty



SPECIFICATIONS

For full specifications, visit danuser.com

Hornet	Model T7	Model T8-RR
Base Weight	Skid-Steer Mount: 1,290 lb. Backhoe & Excavator Mount: 975 lb.	Skid-Steer Mount: 1,485 lb. Backhoe & Excavator Mount: 1,150 lb.
Max. Strikes per Minute	500-900	400-800
Hydraulic Requirements	2,000 - 3,500 PSI 10-30 GPM	2,200 - 3,500 PSI 13-30 GPM
Driving Tool Inside Diameter (Max. Post Size)	Domed: 7.27" Flat: 7.27"	Domed: 8.27" Flat: 8.27" Railroad Tie (Flat): 12.3"
Excavator Weight*	9,000 lb. and over	13,500 lb. and over
Energy Class	750 ft.-lb.	1,150 ft.-lb.
Mounts	Skid-Steer, Backhoe & Excavator Quick Attach (not for front-end loaders)	

*Do not exceed the rated operating capacity of your vehicle. The addition of a Hornet and its mount adds up to 1,600 lb. of additional weight. Verify that the vehicle has sufficient lifting capacity in each of the different vehicle positions. On Hornets with a grapple, the post weight will need to be considered as additional weight for lifting capacity considerations.



MODEL TYPES

T7: T-post to 7" O.D. post or pipe

T8-RR: T-post to 8" O.D. post, pipe, or railroad tie



ACCESSORIES / OPTIONS

Driving Tools

Domed: (T7: PN 196067 / T8-RR : PN 196074) Suitable for all types of posts and pipe.

Flat: (T7: PN 196067F / T8-RR: PN 196074F) Generally used for wood posts.

T8-RR Railroad Tie Flat: (PN 196074R) Generally used for 7"x9" railroad ties or other posts up to 12" diameter.



Grapple Option

May be added to any base model machine for one-person operation.

See danuser.com for part number.

Tilt Option

May be added to any base model machine for tilt up to 20° tilt left or right.

See danuser.com for part number.

Additional Weight Kit

With Tilt: PN 214201

Without Tilt: PN 200076

For skid-steer models only.



Wiring Harness

PN 21220

8-Pin or 14-Pin Pigtail

For skid-steer models only.

Allows control of tilt function from vehicle joystick.

Battery Connection Wiring Harness

PN 21253



*When storing skid-mounted Hornets, the driving tool must be re-installed.



T-Post Adapter

PN 21149

Required for driving T-posts. If using Domed Driving Tool, must order T-Post Adapter Domed Driving Tool Kit (PN 220011).



*Concrete Breaker

T7: PN 236080

T8-RR: PN 236082

Use to break rock and reinforced concrete. Tool has amoil style point.



*Rock Spike

PN 236090

For use on all versions of T8-RR only. Use to create pilot holes for posts in rocky areas. Overall length 60".

BACKHOE & EXCAVATOR MOUNTS



Tool-less quick-attach system

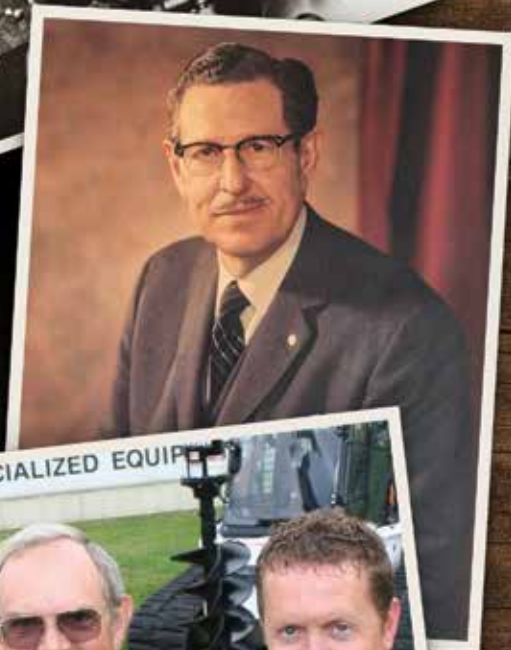
Three-hole adjustment for vehicle clearance

Mounts sold separately from base unit



PN 240289

Optional adapter allows excavator-mounted Hornet to be used on CTL/skid-steers



A HISTORY OF INNOVATION

Established in 1910, Danuser is a 4th generation family owned and operated company. With decades of design and manufacturing experience, we build our products with reliability that will last for generations. From our renowned auger system released in the mid-1940s to the more current designs, our commitment to our customers remains the same - to design and build products that are the benchmark of quality, reliability, and longevity.

In the words of our founder K.B. Danuser, "Good enough won't do - it must be right."

Danuser manufactures industrial and agricultural attachments for various applications, serving many industries worldwide. Please visit www.danuser.com to see our full line of attachments.



500 E 3rd St. • P.O. Box 368
Fulton, MO 65251

(573) 642-2246 • sales@danuser.com

www.danuser.com

