

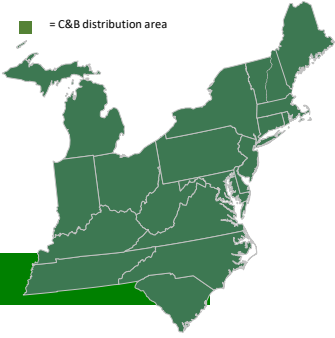


# CUMMINGS & BRICKER

www.cummingsandbricker.com  
support@cummingsandbricker.com

Effective: 10/20/2025

F.O.B. C&B



## ROTARY CUTTERS

FOB C&B Warehouse = 72" & under - \$300; 73" & over - \$500; Over 96" - Get quote.

ITEMNUMBER	DESCRIPTION	WEIGHT	PRICE
RC4LDIDSB	Rotary Cutter 48" - Shear Bolt, 18-32HP	350	\$1,995.00
RC4LDIDSC	Rotary Cutter 48" - Slip Clutch, 18-32HP	350	\$1,952.00
RC5SDIDSB	Rotary Cutter 60" - Shear Bolt, 20-50HP	530	\$2,223.00
RC5SDIDSC	Rotary Cutter 60" - Slip Clutch, 20-50HP	530	\$2,168.00
RC6SDIDSB	Rotary Cutter 72" - Shear Bolt, 25-65HP	623	\$2,551.00
RC6SDIDSC	Rotary Cutter 72" - Slip Clutch, 25-65HP	623	\$2,443.00
RC6MDIDSC	Rotary Cutter 72"- Slip Clutch, 28-65HP, Medium Duty, Chain Guards	761	\$3,536.00
RC7MDIDSC	Rotary Cutter 84" - Slip Clutch, 45-65HP, Medium Duty	1100	\$4,334.00

## ROTARY CUTTER ACCESSORIES

ITEMNUMBER	DESCRIPTION	PRICE
9000148	4' Front Rubber Guard W/ Hardware	\$61.00
9000149	5' Front Rubber Guard W/ Hardware	\$70.00
9000150	6' Front Rubber Guard W/ Hardware	\$86.00
9000151	4' Rear Metal Guard W/ Hardware	\$36.00
9000589	4' Front Chain W/ Hardware	\$124.00
9000590	4' Rear Chain W/ Hardware	\$108.00
9000591	5' Front Chain Guard W/ Hardware	\$148.00
9000592	5' Rear Chain Guard W/ Hardware	\$125.00
9000593	6' Front Chain Guard W/ Hardware	\$178.00
9000594	6' Rear Chain Guard W/ Hardware	\$135.00

### ROTARY CUTTER

3-Point rear attach cutter is ideal for grass, stalks & light brush. The round back design makes it great for mowing in tight corners.

- 540 RPM tractor PTO speed ONLY
- 45 HP heavy-duty cast iron gearbox
- 12 gauge deck construction
- Balanced stump jumper blade pan w/heavy duty 3" heat treated forged blades
- Series 4 shielded PTO w/shear pin
- Adjustable laminated, puncture resistant rear wheel
- Category 1 quick-hitch compatible hookup (Cat 1 pins included)
- Durable, corrosion-resistant powder coat yellow finish
- Available in 4', 5', 6' and 7' sizes



Standard Duty Cutter



Medium Duty Cutter



## BOX BLADES

ITEMNUMBER	DESCRIPTION	WEIGHT	PRICE
BB4LDID	Box Blade 4' Light Duty - 17-25HP	245	\$970.00
BB5SDID	Box Blade 5' Standard Duty - 18-35HP	445	\$1,190.00
BB6SDID	Box Blade 6' Standard Duty - 18-35	445	\$1,269.00
BB6MDID	Box Blade 6' Medium Duty - 20-50HP	474	\$1,508.00
BB7MDID	Box Blade 7' Medium Duty - 25-60HP	510	\$1,647.00
BB8MDID	Box Blade 8' Medium Duty - 25-65HP	611	\$1,838.00

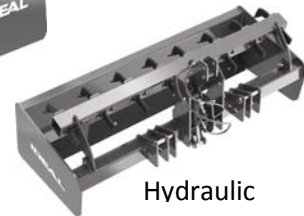
## Heavy Duty Box Blade

ITEMNUMBER	DESCRIPTION	WEIGHT	PRICE
BB406GU	Box Blade 6' Heavy Duty - 120HP, 6 Shanks	720	\$2,200.00
BB407GU	Box Blade 7' Heavy Duty - 120HP, 8 Shanks	800	\$2,400.00
BB408GU	Box Blade 8' Heavy Duty - 120HP, 8 Shanks	855	\$2,600.00
BBH406GU	Box Blade 6' Heavy Duty Hydraulic - 6 Shanks	885	\$3,600.00
BBH407GU	Box Blade 7' Heavy Duty Hydraulic - 8 Shanks	975	\$3,800.00
BBH408GU	Box Blade 8' Heavy Duty Hydraulic - 8 Shanks	1045	\$4,000.00

### BOX BLADES



### Heavy Duty Box Blades



Hydraulic

- **PERFORMS COUNTLESS JOBS.** Collects gravel, smooths rough spots, levels ruts, potholes, driveways, etc.
- **ALL SEASON.** Tough corrosion-resistant powder coat finish.
- **FOUR DEPTH LEVELS.** Adjustable ripper shanks allows for mixing loose soil to breaking up the toughest ground.
- Widths available from 4' - 8'
- ½" Thick Endplate
- Cat 1 & 2 Hitch
- High-Back Box Design
- Reversible & Replaceable Cutting Edge
- Available with hydraulic cylinder lifts or engages scarifier shanks.
- Widths available from 6' – 8'



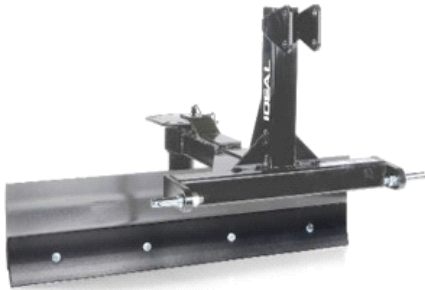
## REAR GRADER BLADE

ITEMNUMBER	DESCRIPTION	WEIGHT	PRICE
GB5SDID	Rear Grader Blade 5' Standard Duty - 20-45HP	197	\$623.00
GB6MDID	Rear Grader Blade 6' Medium Duty - 20-50HP	332	\$1,055.00
GB6SDID	Rear Grader Blade 6' Standard Duty - 20-45HP	213	\$672.00
GB7MDID	Rear Grader Blade 7' Medium Duty - 25-60HP	348	\$1,113.00
GB8MDID	Rear Grader Blade 8' Medium Duty - 25-65HP	534	\$1,383.00

## LAND GRADER

ITEMNUMBER	DESCRIPTION	WEIGHT	PRICE
LG6SDID	Land Grader 6' Standard Duty - 20-50HP	458	\$1,814.00
LG8MDID	Land Grader 8' Medium Duty - 30-65HP	569	\$2,415.00

### REAR GRADER BLADE



- Ideal for grading or scraping needs, such as sand, snow, or gravel
- For tractors rated from 20 - 45 HP
- Pull-pin design with 5 reversible blade angle adjustments
- ¼" blade with ½" thick replaceable cutting edge
- Category I quick-hitch hookup (Cat. I pins included)
- Durable, corrosion-resistant powder coat finish
- Widths available from 5' to 8' in standard or medium duty

### LAND GRADER

- Ideal for grading driveways, leveling land, filling potholes & ditches or reconditioning gravel roads
- Extra length for improved leveling
- 72" or 96" grading widths
- Two cutting edges for maximum grading
- Ideal for tractors from 18 to 55 horsepower
- Category 1 quick hitch compatible
- Durable, corrosion-resistant powder coat yellow finish only
- Widths available: 6' standard duty, 8' medium duty





## ROTARY TILLERS

ITEMNUMBER	DESCRIPTION	WEIGHT	PRICE
RT4LDID	Rotary Tiller 4' Light Duty - 15-35HP	470	\$2,869.00
RT5SDID	Rotary Tiller 5' Standard Duty - 25-50HP	638	\$3,232.00
RT6SDID	Rotary Tiller 6' Standard Duty - 30-55HP	718	\$3,619.00
RT7SDID	Rotary Tiller 7' Standard Duty - 30-50HP	808	\$4,595.00

### ROTARY TILLER

- Perfect for cultivating aerating, and stirring up soil for gardens, food plots and other tillage needs
- Available in 4', 5', 6' and 7' sizes
- Can be switched between forward or reverse rotation
- Oil bath lubrication with all gear driven driveline
- Self-sharpening heat treated cutting tines
- Adjustable runners allow for a tilling depth of up to 7"
- Category I hookup (Cat. I pins included)
- Comes with heavy-duty PTO shaft and slip clutch
- Durable, corrosion-resistant powder coat finish



## LANDSCAPE RAKE

ITEMNUMBER	DESCRIPTION	WEIGHT	PRICE
LR5SDID	Landscape Rake 5' Standard Duty - 19-40HP	195	\$813.00
LR6MDID	Landscape Rake 6' Medium Duty - 20-60HP	287	\$1,188.00
LR6SDID	Landscape Rake 6' Standard Duty - 19-40HP	215	\$843.00
LR7MDID	Landscape Rake 7' Medium Duty - 25-60HP	287	\$1,324.00
LR7SDID	Landscape Rake 7' Standard Duty - 25-40HP	238	\$930.00
LR8MDID	8' Landscape Rake Medium Duty - 25-50HP	483	\$1,618.00
LRWKID	Landscape Rake Wheel Kit		\$387.00

## BUCKET RAKE

ITEMNUMBER	DESCRIPTION	WEIGHT	PRICE
BR52SDID	Bucket Rake 52" Standard Duty	83	\$488.00
BR68SDID	Bucket Rake 68" Standard Duty	100	\$529.00

### LANDSCAPE RAKE



Curved steel tines clear roots, rocks, and other debris.

Widths available from 5' to 8' in standard and medium duty

Optional rake angles let you choose where the debris lands

Reverse option pushes away dirt and debris

### BUCKET RAKE



- Used to remove brush, rocks, small trees & vines
- Widths available: 52" & 68"
- Attaches to front-end loader bucket creating a multipurpose tool
- Maintain and level driveways, smooth gravel
- Prepare food plots and gardens
- Includes heavy-duty ratchet straps & steel cables for attaching
- Constructed from 1/2" thick grade 50 steel
- Durable, corrosion-resistant powder coat finish



## TILLAGE

### MIDDLE BUSTER

ITEMNUMBER	DESCRIPTION	WEIGHT	PRICE
MBSDID	Middle Buster Standard Duty - 25-45HP, CAT I/Quick Hitch	70	\$277.00

### MOLDBOARD PLOWS

ITEMNUMBER	DESCRIPTION	WEIGHT	PRICE
MP1SDID	Moldboard Plow One Bottom Standard Duty - 25-50HP	256	\$1,036.00
MP2SDID	Moldboard Plow Two Bottom Standard Duty - 25-50HP	479	\$1,649.00

#### MIDDLE BUSTER



- 3-Point rear attach plow is handy for planting or plowing up potatoes
- Recommended for tractors rated at 25-45 HP
- 15" double-wing cutting blade for single rows
- Cuts through even compacted soil with ease
- Category 1 quick-hitch compatible hookup (Cat. 1 hookup pins included)
- Durable corrosion-resistant powder coat yellow finish

#### MOLDBOARD PLOW



- 3-point rear attach plow is ideal for deep plowing and preparing soil for tilling and planting
- Plow provides maximum cutting through even compacted soil
- Available in single or two bottom units
- Replaceable 14" plow shares, shins, and landsides are available
- Category I hookup (Cat. I pins included)
- Durable, corrosion-resistant powder coat finish



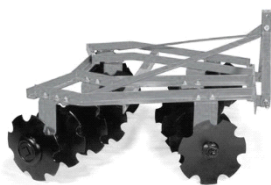
## TILLAGE DISC HARROW

ITEMNUMBER	DESCRIPTION	WEIGHT	PRICE
DH6SDID	Disc Harrow 6' Standard Duty, 22-40HP	553	\$1,820.00
DH7MDID	Disc Harrow 7' Medium Duty, 30-55HP	846	\$2,730.00

## FIELD CULTIVATOR

ITEMNUMBER	DESCRIPTION	WEIGHT	PRICE
FC1SDID	Field Cultivator One Row Standard Duty - 19-45HP	139	\$472.00
FC3SDID	Field Cultivator 3 Bar Standard Duty - 25-50HP	267	\$1,179.00

### DISC HARROW



#### 5' Light Duty Disc

- Heavy duty steel notched blades to perfectly prep and till vegetable plots and gardens.
- Adjustable angles to aggressively dig up dirt, cutting a 5' swath with each pass.
- Heavy duty frame

#### 6' Standard Duty Disc

- 3-point rear attach tillage disc used to prepare soil for planting
- Heavy-duty angle-iron frame with 10-18" x 3mm notched blades, 10-18" x 3mm smooth blades, and heavy-duty sealed bearings
- 6-1/2' cutting swath with each pass
- Category I quick-hitch hookup (Cat. I pins included)
- Features our durable, corrosion-resistant powder coat finish

#### 7' Medium Duty Disc

- 3-point rear attach tillage disc to prepare soil for planting
- Heavy-duty box frame with 10-18" x 3mm notched blades, 10-18" x 3mm smooth blades, and heavy-duty sealed bearings
- Front and rear disc gangs have adjustable angles and cut a 7' swath with each pass
- Category I quick-hitch hookup (Cat. I pins included)
- Durable, corrosion-resistant powder coat finish

### FIELD CULTIVATOR

- 3-Point rear attach cultivator designed for family gardens and smaller farming operations
- Useful when preparing garden soil, planting beds, and cultivating for weed control
- 6 cultivator tines with 1-3/4" x 10" long reversible curved points
- Category I quick-hitch hookup (Cat. I pins included)
- Recommended for tractors rated at 19-45 HP





## PALLET FORK

ITEMNUMBER	DESCRIPTION	WEIGHT	PRICE
PF342ID	42" Pallet Fork - Lifts 3000 lbs., Universal Quick-Attach	368	\$1,151.00

## BALE SPEARS

ITEMNUMBER	DESCRIPTION	WEIGHT	PRICE
HF1SDID	Single Bale Spear Standard Duty - 3-point, CAT I/Quick Hitch Compatible, Lifts 1500 lbs.	64	\$284.00
HF1MDID	Single Bale Spear Medium Duty - 3-point CAT I/Quick Hitch Compatible, Lifts 2000 lbs.	98	\$454.00
HFB1ID	Bucket Single Spear - Bolts To Bucket, Lifts 2000 lbs.	68	\$382.00
HFF1ID	Front Single Spear - Universal Quick-Hitch, Lifts 2000 lbs.	167	\$746.00

## BOOM POLE

ITEMNUMBER	DESCRIPTION	WEIGHT	PRICE
BPSDID	85.5" Long Boom Pole Standard Duty - CAT I, Multiple Welded Lifting Loops, Lifts 1000 lbs. (rear loop)/500 lbs. (front loop)	66	\$202.00
BPMDID	95" Long Boom Pole Medium Duty - CAT I & II/Quick Hitch, Multiple Welded Lifting Points, 2000 lbs. (Rear Points)/1000 lbs. (Front Loops)	150	\$481.00

## FERTILIZER SPREADER

ITEMNUMBER	DESCRIPTION	WEIGHT	PRICE
PFSID	Poly Fertilizer Spreader - Minimum 18 HP, CAT I, 500 lbs Tub Capacity, 37" Tub Diameter	75	\$927.00
FSID	Fertilizer Spreader - Minimum 24 HP, CAT I, 850 lbs. Tub Capacity, 40" Tub Diameter	135	\$880.00
619004I	Agitator Assembly		\$102.30
PFSIDHC	Hopper Cover For PFSID Fertilizer Spreaders		\$165.00

### PALLET FORKS

- **UNIVERSAL:** Compatible with most quick-attach loaders
- **FULLY ADJUSTABLE:** Spring-loaded latches allow fork spacing 0-37"
- **HEAVY LIFTER:** Replaceable ITA style heat-treated forks provide a maximum lift capacity of 3000 lbs.\*



\*based on load placement

### BALE SPEAR

Corrosion-resistant, powder coat finish. Heavy-duty replaceable heat-treated upper spear & two lower stabilizers

#### 3-POINT MOUNT

- 3-point rear attach, CAT I quick-hitch hookup (Cat. I pins included)
- Max bale capacity: 1,500 to 2,000 lbs.

#### FRONT MOUNT

- Universal Quick-Attach
- Max bale capacity of 2,200 lbs.

#### BUCKET MOUNT

- Mounts with a single bolt
- Max bale capacity of 2,000 lbs.



3-point Mount



Front Mount



Bucket Mount

### BOOM POLE

- For loading items on to trailers, pulling up old fence posts, or other chores - lifts up to 1,000 lbs. Heavy duty poles up to 2,000 lbs.
- 3-point rear attach lifting pole with Category I hookup (Category I pins included)
- Multiple lifting loops for extra capacity & heights
- Durable, corrosion-resistant powder coat finish



### FERTILIZER SPREADER

- Seamless, 1-piece, 850-lb. & 500-lb. capacity hoppers
- Reversible lift arm pins for different size tractors
- PTO-driven spin broadcast w/treated spreading disc & galvanized fins
- Side discharge hopper for accuracy & even spread
- Spreading width – 12-60 feet
- Broadcasts to each side
- Fully splined gearbox shaft
- Fully galvanized opening system kit
- CAT 1 quick-hitch (Cat. 1 pins included)





## Hydraulic Dump Trailer

ITEMNUMBER	DESCRIPTION	WEIGHT	PRICE
DT15ID	Utility Hydraulic Dump Trailer - 70" x 50" x 12" Bed, Swivel Clevis Hitch, 2" Coupler Optional	650	\$3,300.00

### Hydraulic Dump Trailer

Whether you're clearing fall leaves or cutting trails, updating your home's landscape or tackling farm chores, the Hydraulic Dump Trailer offers the versatility you need to get the job done.

**Robust Construction:** Built with a 12-gauge formed steel bed supported by a sturdy, 2" x 3" rectangular steel tube frame.

**Impressive Capacity:** A 1.5-ton load capacity and generous 24 cubic feet of space.

**Hydraulic Power:** The double-acting hydraulic hand pump, paired with a single-action 3" x 12" cylinder, allows for smooth and reliable dumping. A hydraulic remote hookup (hose included) for compact utility tractor use allows for even quicker dumping.

**Efficient Dumping:** The 45° dump angle ensures optimal unloading, making your tasks more efficient and less labor-intensive. The tailgate opens from the top or bottom for easy dumping or adjustable spreading.

**Enhanced Maneuverability:** The walking beam and tandem axle design enhance load distribution and stability, minimizing wear and tear while improving handling.

**Versatile Hitch Options:** Featuring a standard swivel clevis hitch, with an optional 2" coupler available.



#### Overall Dimensions

Length	100.5"
Width	54.5"
Height	33.5"

#### Bed Dimensions

Length	70"
Width	50"
Height	12"

#### Construction

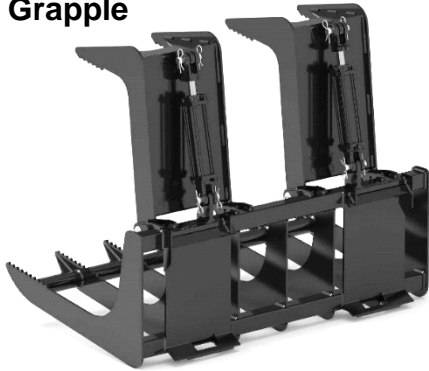
Bed	12 Ga Formed Steel Sides
Frame	1/8" Rectangular Steel Tubing 2" x 3"
Weight, Approx.	650 lbs.
Hitch	Swivel Clevis Standard, 2" Coupler Optional
Tires	18 x 8.5 x 8 4ply Turf-Style
Axle	Walking Beam Tandem
Capacity	1.5 Ton / 24 Cu. Ft.
Dumping Mechanism	Double Acting Hydraulic, Hand Pump, CUT Hydraulic Remote, Hookup (hose included)
Features	Fold Away Tongue Jack, Single Action 3" x 12" Cylinder, Dump Angle 45"



## TINE GRAPPLE

ITEMNUMBER	DESCRIPTION	WEIGHT	PRICE
TGQA254ID	55" Dual Clam Grapple - 7 Tines, 9" spacing, 30-55HP, SSL	445	\$2,375.00

### Tine Grapple



- Greaseable Flag Pins with Bushings at each Clam Pivot Point.
- 0.50" Thick Clam Pivot Mounts
- 0.375" Thick Tines with 0.25" Thick Gussets
- 0.75" Thick Cylinder Mounts

Dual Clam	
Overall Width	54.75"
Overall Depth	37"
Inside Depth	26"
Overall Height Closed	23.5"
Overall Height Open	42"
Grapple Inside Opening	32"
Clam Width	14.38"
Clam Number	2
Number of Tines	7
Tine Spacing	9"
Number of Cylinders	2
Cylinder Specs.	2" Bore, 8" ASAE Stroke
Mount Type	Universal Quick Attach
Weight	445 lbs.
Horsepower Range	30-55

## COMPACT GRAPPLE

ITEMNUMBER	DESCRIPTION	WEIGHT	PRICE
CRGQA154ID	Compact Root Grapple 54" - Up to 40 HP, Universal Q-Tach	240	\$1,250.00

### Compact Root Grapple

Built for versatility and ease of use, this single clam root grapple makes quick work of brush, roots, logs, and debris. The single upper jaw delivers strong clamping power for secure handling while maintaining excellent visibility and precision. A universal quick-attach hitch ensures easy compatibility with most compact tractors, while the open-bottom design allows dirt to fall away for faster, more efficient cleanup.



#### SPECIFICATIONS:

Approximate Weight	240 lbs.	Number of Tines (Upper/Lower)	4/7
Overall Width	54.25"	Tooth Spacing	9"
Top Clamp Width	27.2"	Tractor HP	Up to 40 HP
Closed Depth	16"	Bottom Tooth Working Length	12"
Closed Height	25.3"	Bottom Frame Steel Thickness	.25"
Hitch	Universal Quick-Attach	Hydraulic Cylinder	2" Bore x 6" ASAE Stroke
Open Height	40"	Max Hydraulic Pressure	2500 PSI
Grapple Opening	35.5"		



## TRAILER MOVER

ITEMNUMBER	DESCRIPTION	WEIGHT	PRICE
TMSDID	Trailer Mover Standard Duty - CAT I/Quick Hitch, Lifts 3000 lbs., 2 5/16" Gooseneck Ball, 2" Receiver	47	\$246.00

## QUICK HITCH

ITEMNUMBER	DESCRIPTION	PRICE
R		
QH1ID	Quick Hitch - CAT I	\$250.00



## CARRY ALL

ITEMNUMBER	DESCRIPTION	WEIGHT	PRICE
CASDID	Carry All Stanard Duty - CAT I/Quick Hitch, Lifts 1000 lbs., Pre-Drilled Holes For Platform Connection	86	\$211.00

### Trailer Mover

- 3-point rear attach trailer mover
- Conveniently move trailers without raising the landing gear
- Rated for trailers up to 3,000 lbs.
- 2" receiver accepts hitch for pin drop wagons or ball mount trailers
- 2-5/16" gooseneck ball included with purchase



### Carry All

- deal for small moving and carrying needs up to 1,000 lbs
- 3 point rear attach platform frame
- Pre-drilled holes throughout frame for easy platform installation
- Construct and attach your own custom platform



**NOTE:** For moving unloaded/empty trailers ONLY. Do not exceed lift capacity of tractor.



## SNOW PUSHER

ITEMNUMBER	DESCRIPTION	WEIGHT	PRICE
SP6SDID	Snow Pusher 6' Standard Duty - 30-60HP Skid Steer & 30-75HP Tractor, 30" Moldboard Height	448	\$1,926.00
SP7SDID	Snow Pusher 7' Standard Duty - 40-80HP Skid Steer & 55-100 HP Tractor, 37" Moldboard Height	575	\$2,237.00
SP8SDID	Snow Pusher 8' Standard Duty - 40-80HP Skid Steer & 55-100 HP Tractor, 37" Moldboard Height	605	\$2,307.00
SP7BDK	7' Back Drag - Rubber Edge		\$995.00
SP8BDK	8' Back Drag - Rubber Edge		\$1,076.00

### SNOW PUSHER

- Universal Quick-Attach; works great on utility tractors outfitted with compatible front-end loaders, can also be used with skid steer and compact track loaders\*
- Manages snow quickly and efficiently
- 8" rubber replaceable and adjustable wear edge
- 33" blade depth
- 6' - Compatible with 30-75 HP tractors and 30-60 HP skid steer and track loaders\*
- 7' - Compatible with 55-100 HP tractors and 40-80 HP skid steer and track loaders\*
- 8' - Compatible with 55-100 HP tractors and 40-80 HP skid steer and track loaders\*
- Skid shoes are replaceable and reversible
- Durable, corrosion-resistant powder coat finish

*\*May not be compatible w/skid steer loader outfitted w/forward opening door.*





## FINISHING MOWER

ITEMNUMBER	DESCRIPTION	WEIGHT	PRICE
FM5SDID	Finish Mower 5' Standard Duty - 20-60HP, CAT I/Quick Hitch W/Floating Top Link	628	\$2,904.00
FM6SDID	Finish Mower 6' Standard Duty - 20-60HP, CAT I/Quick Hitch W/Floating Top Link	670	\$3,302.00

### FINISHING MOWER

- Available in 5' and 6' models
- Free-floating flex hitch system allows the mower to follow the contour of the ground to mow evenly over uneven terrain
- Heavy-duty steel deck and cast-iron gearbox
- Single belt with easy adjustment
- Shielded PTO shaft with shear pin
- Turf-friendly tires, anti-scalp roller and fully baffled deck with easy height adjustment
- Rear discharge with rubber guards only
- Durable, corrosion-resistant powder coat finish



## DISC MOWER

ITEMNUMBER	DESCRIPTION	WEIGHT	PRICE
DM7MDID	Disc Mower 7' Medium Duty	874	\$10,334.00
DM8MDID	Disc Mower 8' Medium Duty	975	\$11,000.00
DM9MDID	Disc Mower 9' Medium Duty	1144	\$11,500.00

### DISC MOWERS

Ideal Disc Mowers are available in a variety of cutting widths to match your needs. From the smaller DM7MD, to the sturdy DM8MD, to the larger DM9MD, these disc mowers are designed and built with maximum efficiency and reliable performance in mind.

- 540 RPM PTO Drive with overrun clutch
- Hydraulic lift cutter bar
- Hydraulic outlet: 1 single-acting valve
- Single power band belt: set of 4 V-belts with tensioner
- Breakaway assembly
- Optional outer swath wheel



	DM7MD	DM8MD	DM9MD
Hitch Compatibility	3 point: CAT 1 or 2	3 point: CAT 1 or 2	3 point: CAT 2
PTO Horsepower	40HP	45HP	55HP
Cutting Width	6' 6"	7' 9"	9'
Discs	5	6	7
Knives	10	12	14



## UTV ATTACHMENTS

### UTV TILLAGE

#### UTV DISC AND CULTIPACKER COMBO

ITEMNUMBER	DESCRIPTION	WEIGHT	PRICE
UDC5ID	UTV Disc/Cultipacker Combo 5'	711	\$3,440.00

#### UTV DISC HARROW

ITEMNUMBER	DESCRIPTION	WEIGHT	PRICE
UDH5ID	UTV Disc Harrow 5'	430	\$1,980.00

#### UTV FLIP DISC

ITEMNUMBER	DESCRIPTION	WEIGHT	PRICE
UFD5ID	UTV Flip Disc 5'	231	\$1,184.00

#### DISC AND CULTIPACKER COMBO



- Attaches to ATV's, UTV's, and small tractors
- Combines deep cutting of the eight-blade tillage disc with soil preparation and compaction of the adjustable culti-packer
- Easily raise and lower culti-packer with heavy-duty front mounted winch
- Super heavy-duty 711 lb. steel frame and sealed bearings



#### DISC HARROW



- 2" ball hitch for easily pulling behind 4-wheelers
- 16" adjustable blades for deep and maximum cutting
- Adjustable wheel height with ratchet
- 4' cutting width
- Durable, corrosion-resistant powder coat finish

#### FLIP DISC



- Easy pulled behind 4-wheelers and small tractors
- 8 notched 16" blades for deep and maximum cutting
- 55" operating width with a 20 degree cutting angle



## UTV ATTACHMENTS

### UTV FERTILIZER SPREADER

ITEMNUMBER	DESCRIPTION	WEIGHT	PRICE
UFSID	UTV Fertilizer Spreader	136	\$1,441.00

#### Pull Behind Spreader/Trail Feeder

- ATV or garden tractor-drawn spreader for fertilizing or seeding
- 5 bushel capacity
- Approximate 300 lbs. capacity covering approximately 65,000 square feet
- Spread up to 20 feet wide
- Distribution pattern reduces over-fertilizing or under-fertilizing



### UTV MANURE SPREADER

ITEMNUMBER	DESCRIPTION	WEIGHT	PRICE
UMS10ID	UTV Manure Spreader 10 Bushel	207	\$1,463.00

#### COMPACT MANURE SPREADER

- Holds approximately 13 cubic feet of manure
- Attaches to any ATV, UTV, or garden tractor
- Tractor-tread solid tires
- Chain-driven steel agitator
- 1-piece extruded aluminum drum with spreading vanes
- Durable, corrosion-resistant powder coat finish





## UTV ATTACHMENTS

### UTV WIRE UNROLLER

ITEMNUMBER	DESCRIPTION	WEIGHT	PRICE
UWUID	UTV Wire Unroller	32	\$167.00

### 2" RECEIVER WIRE UNROLLER

- Attaches to an ATV, tractor or truck with 2" receiver
- Holds various size rolls of wire for easier fencing
- Perfect for fencing jobs in tight places
- Durable, corrosion-resistant powder coat finish, for long lasting performance



## WIRE STRETCHER

ITEMNUMBER	DESCRIPTION	WEIGHT	PRICE
WSSDID	Wire Stretcher Standard Duty - CAT I, 65" Tall x 24" Diameter Wire Roll Capacity	183	\$635.00

### WIRE FENCE STRETCHER

- 3-point, rear attach stretcher lets one person handle the wire and fencing work of a crew
- Stretcher holds spools of heavy wire fencing and unrolls as well as stretches without kinking or tangling
- Handles field fence rolls up to 65" tall
- Fence can be stretched to desired tightness and held in place for nailing
- CAT I quick-hitch hookup (CAT I pins included)
- Durable, corrosion-resistant powder coat finish





## Post Pounders

ITEMNUMBER	DESCRIPTION	WEIGHT	PRICE
ID100	Vibratory Post Pounder - SSL, 500-900 Blows Per Minute, 11-18 GPM	1144	\$7,962.00
ID110	Vibratory Post Pounder - SSL, 400-800 Blows Per Minute, 13-24 GPM	1250	\$9,143.00
ID205	Trailer - Electric Start 14HP Kohler Engine, Joystick Control, 750 lb. Hammer	3300	\$19,731.00
ID210	Trailer - Reese Hitch, 14HP Commercial Kohler Engine, Joystick Control, 750 lb.	3300	\$18,816.00

### POST POUNDERS

- 14 HP Kohler engine and direct mounted hydraulic pump for powerful efficiency
- Easily operated with a joystick
- Hydraulic post hugger with multiple post size adjustments
- Drives up to 12" diameter post 12' in height
- Adjustable hammer height for different post lengths



**ID 200 Series Trailer Models**



Hammer Weight	750 lbs.
Transport Height	98"
Transport Width	93"
Transport Length	118"
Total Mast Stroke	67"
Drive Options	14 Kohler Engine <i>*Electric Start Models Available</i>
Hammer Height (Min - Max)	46" – 156"



### VIBRATORY POST POUNDER

Features a domed-cup and flat-topped driving head. Comes with breaker spike for rock & concrete.

- Drive post to any angle, and to ground level
- Comes with: Tool, box nitrogen charge kit driving spike, breaker spike, domed-top driving head, flat-topped driving head, and filled nitrogen bottle.

**\*FENCING EQUIPMENT** also available. See Wire Stretcher and Wire Unroller.

### ID100 VIBRATION POST DRIVER

**Skid Steer Model**

Energy Class	1150 ft-lb.
Thickness of Steel Plate Frame	5/8"
Min. Skid Steer Lifting Capacity	2500 lbs.
Oil Flow Required (GMP)	13-24 GPM
Working Pressure	2200 PSI
Chisel Shaft Diameter	3"
Blows Per Minute (BPM)	Up to 800 BPM
Domed Cup Diameter	9"

## POST POUNDER ACCESSORIES

ITEMNUMBER	DESCRIPTION	PRICE
ID120K	Pilot Auger Kit - Less Auger, For Trailer Models	\$5,130.00
ID120KINSTALL	Install ID200K Pilot Auger Kit	\$881.00
2000281	6" Auger For ID120K	\$1,080.00
2000282	4.5" Auger Bit For ID120K	\$785.00
TAVID	Tilt Attachment For ID100 & 110 Skid Steer Pounders, Diverter/Hoses Included	\$3,750.00