



# 2026 PRICE BOOK

JANUARY 01, 2026

MANUFACTURED IN CANADA

[reistindustries.com](http://reistindustries.com)



# CONTENTS

## LANDSCAPING

LANDSCAPER (CAT I).....	4
LANDSCAPER (CAT II).....	5
AERASEEDER SELF PROPELLED .....	8
AERASEEDER 48" 60" 72" & 96" .....	10
IN-FIELDER .....	12
DRAG MAT.....	15
POWER SPUR .....	16
ROTORAKE 48".....	17
ROTORAKE 60"-96".....	18
ROTORAKE WIRING KITS .....	20
ROTORAKE PTO .....	21
TRAIL PRO .....	22
LR30 LAWN ROLLER SELF PROPELLED .....	23
MULTI-PACKER .....	24
TREE PULLER .....	26
<b>NEW</b> BRUSH MULCHER.....	27
STUMP GRINDERS DIRECT DRIVE.....	28
STUMP GRINDERS HYDRAULIC DRIVE.....	31
EARTH BORE AUGER DRIVES .....	35
AUGER BITS .....	36
AUGER ACCESSORIES .....	37

## EQUESTRIAN

MULTI-GROOMER.....	39
MULTI-GROOMER PONY.....	42

## TECHNICAL

WEIGHTS & DIMENSIONS .....	44
HYDRAULIC HORSEPOWER FORMULA .....	52
FREIGHT RATES .....	52

E&OE Errors and omissions excepted December 2025. Pricing and specifications printed in this catalogue are current at printing and may be subject to change. For current information on all of our products, please contact Reist Industries.

# LANDSCAPER (CAT I)

LANDSCAPING



## ABOUT THE LANDSCAPER (CAT I)

- CAT I Hitch
- Horsepower varies depending on model
- Serrated heat-treated grader blade
- Rear pulverizing roller
- Adjustable side wear plates
- 10" high by 9" deep box
- 3/8" side plates

Landscaper CAT I	P48	P60	P72	P84	P96
Dimensions (WLH)	49 X 38 X 33"	61 X 38 X 33"	73 X 38 X 33"	85 X 38 X 33"	97 X 38 X 33"
Working Width	48"	60"	72"	84"	96"
HP Req.	20-30	25-40	30-50	30-60	30-75
Hitch	CAT I	CAT I	CAT I	CAT I	CAT I
Weight (lbs)	350	570	701	745	833
Weight w/ Harrow (lbs)	400	631	784	835	937
Weight w/ Harrow & Ripper (lbs)	525	774	954	1,005	1,170
Weight w/ Seeder Attach. (lbs)	460	690	750	945	1,500
Base Unit	<b>\$3,432</b>	<b>\$3,870</b>	<b>\$4,224</b>	<b>\$4,950</b>	<b>\$5,736</b>

Model Specific Options	Part Number	Price	Part Number	Price	Part Number	Price	Part Number	Price	Part Number	Price
Harrow	H48	<b>\$1,025</b>	H60	<b>\$1,205</b>	H72	<b>\$1,355</b>	H84	<b>\$1,425</b>	H96	<b>\$1,680</b>
Ripper (CAT I)	RIP48	<b>\$2,120</b>	RIP60	<b>\$2,320</b>	RIP72	<b>\$2,570</b>	RIP78/84	<b>\$2,660</b>	RIP96	<b>\$4,060</b>
Grass Seeder	GS48	<b>\$3,938</b>	GS60	<b>\$4,470</b>	GS72	<b>\$4,650</b>	GS84	<b>\$5,080</b>	GS96	<b>\$5,405</b>
Brush	BR48	<b>\$1,730</b>	BR60	<b>\$2,270</b>	BR72	<b>\$2,370</b>	BR84	<b>\$2,430</b>	BR96	<b>\$2,500</b>
Smooth Roller	505548	<b>\$900</b>	505560	<b>\$1,050</b>	505572	<b>\$1,140</b>	505584	<b>\$1,305</b>	505596	<b>\$1,525</b>
Spike Rolling Harrow	SRH48	<b>\$2,270</b>	SRH60	<b>\$2,440</b>	SRH72	<b>\$2,565</b>	SRH84	<b>\$2,845</b>	SRH96	<b>\$3,100</b>

Universal Options	Part Number	Price
Board Scraper	LBS	<b>\$885</b>
Skid Steer to CAT I Quick Hitch Adapter Plate	CATIAP	<b>\$1,085</b>
Push/Pull Hitch	FMH	<b>\$1,644</b>
Push/Pull Hitch With Hydraulic Tilt	PFMH	<b>\$3,180</b>
6" Hitch Extension Set (CAT I) Required if using Swivel Hitch on Landscaper	1000HE	<b>\$642</b>
Hydraulic Top Link (CAT I & CAT II) 10" Stroke (20-1/4" Retracted)	HTC	<b>\$385</b>
Hydraulic Top Link (CAT II) 14" Stroke (24-1/4" Retracted)	HTC14	<b>\$395</b>
Ripper Cylinder 2" x 8"	20FEM08-NW	<b>\$236</b>
Harrow Cylinder 2" x 5"	CYL-S	<b>\$380</b>
CAT I, 3PH, 22° Swivel Hitch	3PHSWL-CATI	<b>\$2,660</b>
Hose Kit With Male Pioneer Ends	H-KIT	<b>\$183</b>

# LANDSCAPER (CAT II)

LANDSCAPING



## ABOUT THE LANDSCAPER (CAT II)

- CAT II Hitch
- 70-120 horsepower
- Serrated heat-treated grader blade
- Rear pulverizing roller
- Adjustable side wear plates
- 18" high by 17" deep box
- ½" side plates

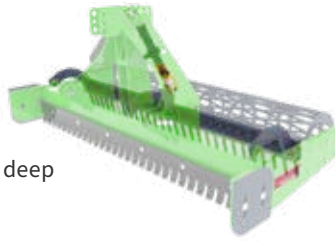
Landscaper CAT II	P96H
Dimensions (WLH)	99 X 46 X 34"
Working Width	96"
HP Req.	70-120
Hitch	CAT II
Weight (lbs)	945
Weight w/ Harrow (lbs)	1,060
Weight w/ Harrow & Ripper (lbs)	1,260
Base Unit	<b>\$7,290</b>

Model Specific Options	Part Number	Price
Harrow	H96	<b>\$1,680</b>
Ripper (CAT II only)	RIP96H	<b>\$4,060</b>
Brush	BR96	<b>\$2,500</b>
Skid Steer to CAT II Quick Hitch Adapter Plate	CATIIAP	<b>\$1,172</b>
Spike Rolling Harrow	SRH96	<b>\$3,100</b>
Grass Seeder Kit	GS96H	<b>\$5,905</b>

Universal Options	Part Number	Price
Hydraulic Top Link (CAT II) 10" Stroke (20-1/4" Retracted)	HTC	<b>\$385</b>
Hydraulic Top Link (CAT II) 14" Stroke (24-1/4" Retracted)	HTC14	<b>\$395</b>
Ripper Cylinder 2" x 8"	20FEM08-NW	<b>\$236</b>
Harrow Cylinder 2" x 5"	CYL-S	<b>\$380</b>
Hose Kit With Male Pioneer Ends	H-KIT	<b>\$183</b>

## HARROW (AVAILABLE FOR CAT I & II)

- Hardened  $\frac{5}{8}$ " square teeth spaced at 2  $\frac{1}{2}$ "
- Removes trash on surface
- Mixes grass seed into soil with seeder attachment
- Makes a nice seed bed
- Manual adjustment from 0-4" deep
- Manual ratchet jack to raise



## HITCH ADAPTER, SKID STEER (PULL ONLY)

- Hitch adapter to attach to skid steer
- Pull only



## HARROW CYLINDER

- Replaces manual ratchet jack to control ripper
- Tooth depth hydraulically



## HITCH ADAPTER, SKID STEER (PUSH AND PULL)

- Hitch adapter to attach to skid steer
- Ability to push and pull



## SMOOTH ROLLER

- Smooth flat finish on soil, sand or synthetic
- Equestrian footings
- Self-adjusting scraper bar
- Water can be added to roll



## HITCH ADAPTER, HYDRAULIC TILTING

- Hitch adapter to attach to skid steer, with hydraulic
- Controls for tilts
- Ability to push and pull



## 6" HITCH EXTENSIONS

- Extension for more clearance



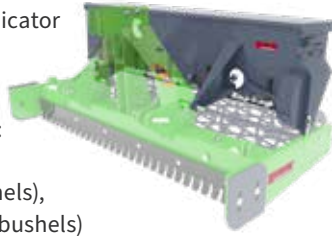
## HYDRAULIC TOP LINK CYLINDER

- Top link grading control
- 8" stroke CAT I
- 10" or 14" stroke CAT II
- Ball ends



## GRASS SEEDER

- Quick attach two-pin mounting system
- Seed rate adjustment with indicator
- Hydraulic-controlled seed opener or optional Manual
- Available widths and capacity:  
48" (2.7 bushels),  
60" (3.4 bushels), 72" (4.1 bushels),  
84" (4.9 bushels), and 96" (5.6 bushels)



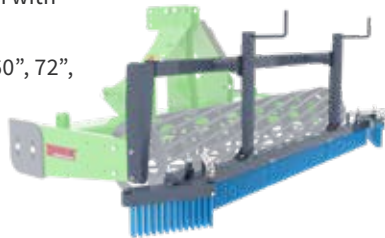
## RIPPER (AVAILABLE FOR CAT I & II)

- 1/2" thick x 2" wide bolt-on ripper teeth
- High-strength, stress-proof ripper bar
- Manual adjustment from 0 to 5" ripping depth
- Available widths: 48", 60", 72",  
84" and 96"
- Manual ratchet jack to raise



## REAR BRUSH (AVAILABLE FOR CAT I & II)

- Brushed finish on walking trails
- Break-away wings to smooth out side ridges
- Adjustable brush depth with two top wind jacks
- Available widths: 48", 60", 72",  
84" and 96"



## SWIVEL HITCH (AVAILABLE FOR CAT I & II)

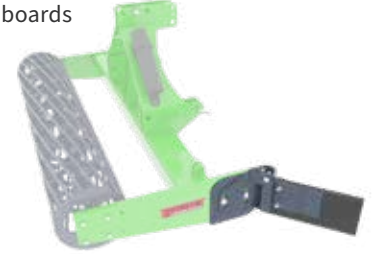
- Turns 22 degrees each way
- Unique self-straightening feature when 3PH is raised
- Lock pin for hard surfaces
- Hitch extensions required



CAT I shown

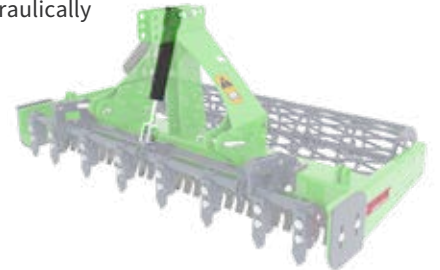
## BOARD SCRAPER

- Get a nice finish from your machine even close to boards of arenas with the board scraper attachment
- Thick rubber to not damage boards



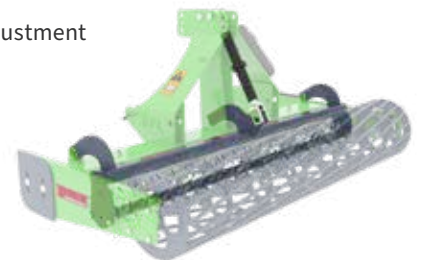
## RIPPER CYLINDER

- Replaces manual ratchet jack to control ripper
- Adjust tooth depth hydraulically
- 2"x 8" Cylinder



## SPIKED ROLLING HARROW

- Ideal for prepping seed beds
- For CAT I & II
- Manual ratched jack adjustment
- To break up clumps



# AERASEEDER SELF PROPELLED

LANDSCAPING



## ABOUT THE AERASEEDER SELF PROPELLED

- Multi-spiked roller
- 850 perforations per square yard
- Honda engine with Eaton Hydrostatic Drive
- Rear smooth packing roller
- Cam-adjusted seed gate
- User-friendly controls
- Seed calibration tray

Self Propelled	AOSCS18SP	AOSCC24SP	AOSCS24SP
Dimensions (WLH)	27 X 60 X 37"	33 X 60 X 37"	
Seeding Width	18"	24"	
Front Roller	CONE	CONE	CONE
Rear Roller	SMOOTH	SMOOTH	SMOOTH
Weight (lbs)	310	360	455
Seed Bin Capacity (Bushels)	1.25	1.5	
Base Unit	<b>\$10,500</b>	<b>\$12,535</b>	<b>\$10,635</b>

Model Specific Options	Part Number	Price	Part Number	Price	Part Number	Price
Rear Spiked Roller	AOS-18CC	<b>\$1,950</b>	AOS-24CC	<b>\$2,025</b>	AOS-24CC	<b>\$2,025</b>
8" D x 2" Wide Gauge Wheel Kit	AOS18GW-KIT	<b>\$1,403</b>	AOS24GW-KIT	<b>\$1,403</b>	AOS24GW-KIT	<b>\$1,403</b>
Weight Bracket	WB18	<b>\$106</b>	WB	<b>\$106</b>	WB	<b>\$106</b>

Universal Options	Part Number	Price
45-Pound Weight	45LBW	<b>\$199</b>
8" D x 4" Wide Gauge Wheels (Set of Wheels Only)	4X8GW	<b>\$740</b>

# AERASEEDER SELF PROPELLED

## GAUGE WHEEL KIT

- 2" wide x 8" diameter solid rubber wheels
- Adjustable stop to control depth of penetration on front spike roller



## 4" WIDE GAUGE WHEEL (UPGRADE)

- 4" wide x 8" diameter UHMW plastic wheels (one pair)
- Wheels only (requires AOS18GW-KIT or AOS24GW-KIT)



## WEIGHT BRACKET (SELF PROP. ONLY)

- Holds up to six 45 pound weights



## 45-POUND WEIGHT

- Add weight to your product to enhance traction, compacting and even the weight distribution of your unit



## REAR SPIKED ROLLER (SELF PROP. ONLY)

- Additional spiked roller increases perforations to 1,700 per square yard



# AERASEEDER 48" 60" 72" & 96"

LANDSCAPING



## ABOUT THE AERASEEDER 48" 60" 72" & 96"

- Internal agitator and bearing assembly deliver smooth, constant seed flow
- The seed rate is achieved through an innovative locking knob adjustment control, allowing for maximum seed-spread accuracy
- The seed flow is turned on and off by a manual or hydraulic lever mechanism
- The tandem rollers oscillate 30 degrees on a pivot, allowing for consistent ground contact on rolling terrain



3-Point Hitch	AOSCS48		AOSCS60		AOSCS72		AOSCS96	
Dimensions (WLH)	52 X 36 X 21"		69 X 41 X 37"		81 X 41 X 37"		105 X 41 X 37"	
Seeding Width	44"		60"		72"		96"	
Hitch	CAT I		CAT I		CAT I		CAT I	
Weight (lbs)	460		1,020		1,185		1,400	
Seed Bin Capacity (Bushels)	4.75		10		12		16	
Front Cone and Rear Smooth	AOSCS48	<b>\$10,209</b>	AOSCS60	<b>\$14,000</b>	AOSCS72	<b>\$14,754</b>	AOSCS96	<b>\$18,887</b>
Front Cone and Rear Cone	AOSCC48	<b>\$11,670</b>	AOSCC60	<b>\$15,650</b>	AOSCC72	<b>\$16,408</b>	AOSCC96	<b>\$20,776</b>
Front Knife and Rear Smooth	AOSKS48	<b>\$10,209</b>	AOSKS60	<b>\$14,000</b>	AOSKS72	<b>\$14,754</b>	AOSKS96	<b>\$18,887</b>
Front Knife and Rear Knife	AOSKK48	<b>\$11,670</b>	AOSKK60	<b>\$15,650</b>	AOSKK72	<b>\$16,408</b>	AOSKK96	<b>\$20,776</b>

Model Specific Options	Part Number	Price	Part Number	Price	Part Number	Price	Part Number	Price
Toolbar Mount 3PH (For 2)	2AOS48TB	<b>\$3,700</b>	2AOS60TB	N/A	2AOS72TB	<b>\$4,050</b>	N/A	N/A
Toolbar Mount 3PH (For 3)	3AOS48TB	<b>\$8,761</b>	3AOS60TB	N/A	3AOS72TB	<b>\$9,122</b>	N/A	N/A
Rear Roller Ext. Kit	48RCSREXT	<b>\$1,160</b>	60RCSREXT	<b>\$1,390</b>	72RCSREXT	<b>\$1,429</b>	96RCSREXT	<b>\$1,858</b>
Manual Shut-off Kit	MSSSO	<b>\$535</b>	N/A	N/A	N/A	N/A	N/A	N/A
Tow Dolly	TD48	<b>\$1,350</b>	N/A	N/A	N/A	N/A	N/A	N/A
Steiner Hitch	135334	<b>\$1,100</b>	N/A	N/A	N/A	N/A	N/A	N/A
Mini Skid Steer	135906	<b>\$1,100</b>	N/A	N/A	N/A	N/A	N/A	N/A
Mini Bobcat	138119	<b>\$1,200</b>	N/A	N/A	N/A	N/A	N/A	N/A
Universal Skid Steer	135902	<b>\$1,300</b>	137030	<b>\$1,800</b>	137030	<b>\$1,800</b>	137030	<b>\$1,800</b>

# AERASEEDER 48" 60" 72" & 96"

## FRONT CONE & REAR SMOOTH

- Application: primary seeding & overseeding



## FRONT CONE & REAR CONE

- Application: Overseeding
- Plant grass seed directly into existing turf, without tearing up the turf, or the soil
- Leave over 1,700 perforations per square yard



## FRONT KNIFE AND REAR KNIFE

- Application: Overseeding & root slicing
- Plant grass seed directly into existing turf



## 45-POUND WEIGHT

- Suitcase style weight



## TOW DOLLY (48" ONLY)

- Manual ratchet jack to raise and lower AeraSeeder on cart
- Cart attaches quickly to three-point hitch mounts on AeraSeeder



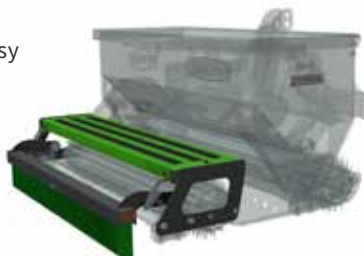
## MANUAL SEED SLIDE SHUT-OFF (48" ONLY)

- Comes standard with hydraulic shut off
- Manual shut off is for tractors without hydraulic remotes



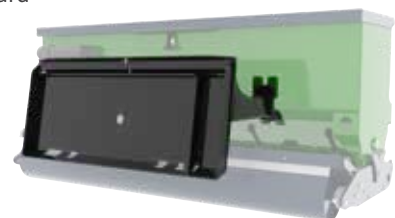
## REAR SPIKED ROLLER EXTENSION (48,72, & 96)

- Extends rear-spiked roller and brush back 7" for optimum ground contact and smoother operation
- Stand-on platform for easy loading of hopper



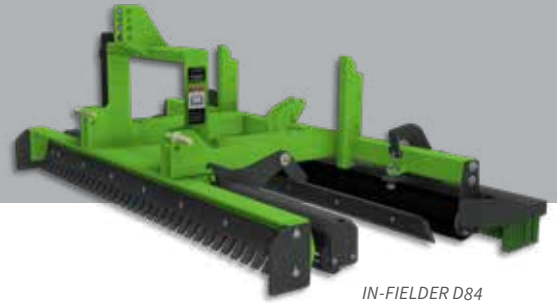
## SKID STEER HITCH

- Bolt on hitch adds skid steer compatibility to (60", 72", 96")
- Bolt on hitch for mini skid applications (48")
- To be used in forward motion/push



# IN-FIELDER

## LANDSCAPING



IN-FIELDER D84

### ABOUT THE IN-FIELDER

- Heavy duty bolt-on serrated grader blade
- Floating clod-breaking pulverizer roller
- Heavy duty floating leveling bar
- Floating rear brush with side bumpers (D72 & D84)
- Broom and rake holders
- Adjustable rear brush
- Lubed pivots



IN-FIELDER D60



IN-FIELDER D72

In-Fielder	D60	D72	D84
Dimensions (WLH)	67 X 43 X 31"	80 X 48 X 32"	97 X 46 X 33"
Width	60"	72"	84"
Hitch	CAT I	CAT I	CAT I & II
Weight (lbs)	620	835	935
Pulverizer Roller	5"	5"	5"
Packer Roller	1 PC. STEEL ROLL	6" X 12" UHMW ROLLS	6" X 12" UHMW ROLLS
Base Unit	<b>\$5,312</b>	<b>\$9,272</b>	<b>\$9,916</b>

Model Specific Options	Part Number	Price	Part Number	Price	Part Number	Price
Rear Long Tine Rake Attachment	RLTR-60	<b>\$1,320</b>	RLTR-H-72	<b>\$1,670</b>	N/A	N/A
Rear Long Tine Rake Hydraulic	N/A	N/A	N/A	N/A	RLTR-84	<b>\$2,515</b>

Universal Options	Part Number	Price
50 gal. Water Tank, Pump, Switch & Nozzle	WT50G	<b>\$1,786</b>
Hand Wand Kit	HWK	<b>\$233</b>
Front Nozzle Kit w/ Switch & Pump	WTFN	<b>\$1,017</b>
Tow Kit w/ Wheels, Manual Lift w/ Ratchet Jacks (Not Rec. For Highway Use)	ITA	<b>\$1,950</b>
Tow Kit Extended for D72 with Harrow w/wheels, Manual lift w/ratchet	ITAEXAS	<b>\$2,320</b>
Rotary Sweeper Brush, 20" Dia. Hydraulic	RSB20	<b>\$4,550</b>
Electric Actuator 100mm Stroke	EAC100AS	<b>\$1,600</b>
Hydraulic Top Link (CAT II) 10" Stroke (20-1/4" Retracted)	HTC	<b>\$385</b>
Hydraulic Top Link (CAT II) 14" Stroke (24-1/4" Retracted)	HTC14	<b>\$395</b>
Hose Kit With Male Pioneer Ends	H-KIT	<b>\$183</b>
Sulky	SK117499	<b>\$1,370</b>
Edger	E105153	<b>\$2,250</b>

# IN-FIELDER

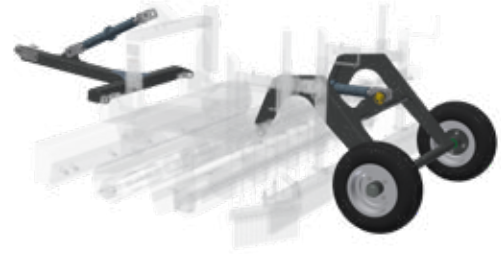
## TOW KIT WITH WHEELS (D60 & D72)

- Tow kit to tow In-Fielder



## TOW KIT EXTENDED (D72)

- Tow kit to tow D72 In-Fielder with long tine harrow option



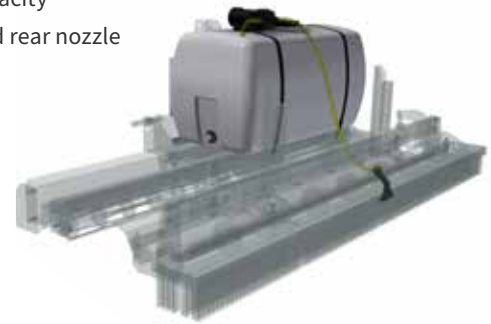
## ROTARY SWEEPER (ALL MODELS)

- 20" diameter nylon bristle brush with spring loaded break-away arm
- Hydraulic-driven
- Adjustable gauge wheel
- Sweep material off grass and away from fence
- Prevent out field ridge



## WATER TANK (ALL MODELS)

- 50 gallon capacity
- 12V pump and rear nozzle



## HAND WAND KIT

- Hand wand kit for easy spraying



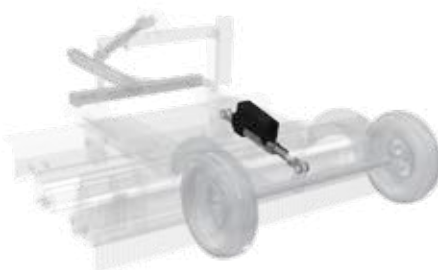
## FRONT NOZZLE KIT

- For dust suppression
- Front nozzle, switch and pump



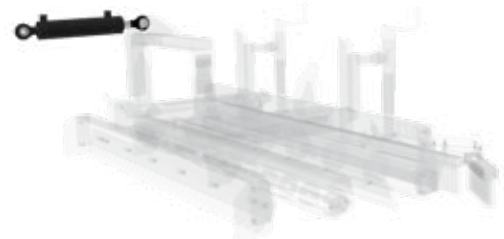
## ELECTRIC ACTUATOR

- 100mm Stroke



## HYDRAULIC TOP LINK (CAT I & II)

- Available for CAT I & CAT II
- Available in 8", 10" and 14" stroke lengths



## REAR LONG TINE HARROW (D60)

- 14" long x  $\frac{3}{8}$ " spring tines
- Loosen up hard-packed surfaces, which helps to dry the soil quicker



## REAR LONG TINE HARROW (D72)

- 14" long x  $\frac{3}{8}$ " spring tines
- Loosen up hard-packed surfaces, which helps to dry the soil quicker



## REAR LONG TINE HARROW HYDRAULIC (D84)

- 14" long x  $\frac{3}{8}$ " spring tines
- Loosen up hard-packed surfaces, which helps to dry the soil quicker



## EDGER

- Get the perfect edge



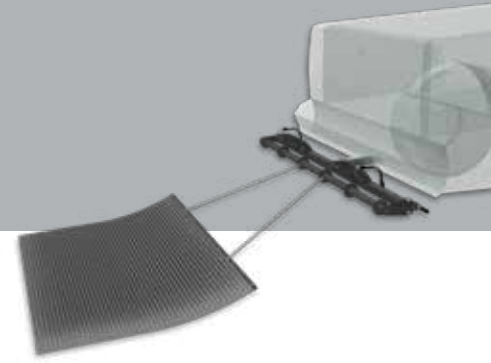
## SULKY

- Sulky fits between the UTV or ATV and the Infielder
- Required for UTVs or ATVs where the hitch moves with the suspension
- Keeps the Infielder level
- Sulky fits into a 2" receiver
- 21" wide x 20" long x 16" high
- 45 lbs. weight



# DRAG MAT

LANDSCAPING



## ABOUT THE DRAG MAT

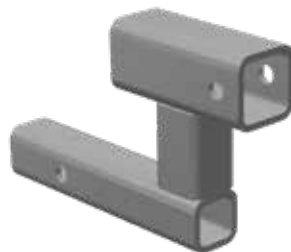
- Rolls up behind your bumper to transport with unique crank, folding handle and lock system
- Fits on to any 2" trailer hitch receiver

Drag Mat	DM66	DM84
Dimensions (WLH)	73 X 20 X 10"	91 X 20 X 10"
Mesh Mat	1" SQ. STAINLESS STEEL MESH	1" SQ. STAINLESS STEEL MESH
Base Unit	\$2,165	\$2,350

Universal Options	Part Number	Price
Hitch Extension and Adapter	DMHEX	\$215

## HITCH EXTENSION

- Often used for ATVs to move the Drag Mat up and away from wheels



# POWER SPUR

LANDSCAPING



## POWER SPUR (REAR)

- No tilt or angle
- Dual-motor design delivers 40% more torque and eliminates outside bearings and chains
- Standard skidsteer mount

## POWER SPUR (FRONT)

- Bolt on adapter plate allows you add a bucket, wheel, or other attachment to the front providing unique versatility to your job site
- For best results the bucket should be wider than the power spur rotor to eliminate ridges

Power Spur	PS72	PS84
Dimensions (WLH)	79 X 20 X 25"	91 X 20 X 25"
Working Width	72"	84"
Overall Width	79"	91"
Suggested Bucket Width	78 - 84"	90 - 96"
Weight (lbs)	720	770
Cont. PSI	3,000 MAX	3,000 MAX
Roto Speed	230-450 RPM	230-450 RPM
Hyd. GPM Range	18-30	18-30
Rotor Torque @ 2500 PSI	550 FT-LBS	550 FT-LBS
Mount Type	STD. SKIDSTEER	STD. SKIDSTEER
Base Unit	PS72	PS84
	<b>\$9,700</b>	<b>\$10,250</b>

Universal Options	Part Number	PS72	PS84
Power Spur Wheel Attachment*	PSWA	<b>\$1,150</b>	<b>\$1,150</b>
Foam Filled Tire**	108110F	<b>\$312</b>	<b>\$312</b>

\*The foam filled tire is \$252 at time of order with PSWA.

## POWER SPUR WHEEL ATTACHMENT (PSWA)

- Attaches to the front of the power spur to maintain depth.
- Adds approx. 17.5" to the overall length of the Power Spur.



Power Spur shown with optional PSWA

## FOAM FILLED TIRES

- Uses the same tire as air filled
- Weighs 39 lbs. (24 lbs. heavier than air filled)

# ROTORAKE 48"

## LANDSCAPING



### FEATURES

- Manual adjustment
- Angles 25 degrees (*no tilt*)
- Wheel can be lifted in order to get up close to objects
- Dual-motor design delivers 40% more torque and eliminates outside bearings and chains

### ROTORAKE RR48-R

- Compatible with RAMROD, Ditch Witch, Toro, Vermeer, Boxer, Kanga, Finn Eagle, and Multione

### ROTORAKE RR48

- Compatible with Bobcat mini hitch on mini track loaders

RotoRake	RR48-R	RR48
Dimensions (WLH)	57X55X28"	57X55X28"
Working Width	48"	48"
Working Width (Angled 25°)	44"	44"
Weight (lbs)	725	725
Cont. PSI	3,000 MAX	3,000 MAX
PTO Required	N/A	N/A
Roto Speed	230-450 RPM	230-450 RPM
Hyd. GPM Range	12-20	12-20
Rotor Torque @ 2500 PSI	325 FT-LBS	325 FT-LBS
Mount Type	MINI SKIDSTEER	MINI SKIDSTEER (BOBCAT)
Gauge Wheels Included	1	1
Angle	MANUAL	MANUAL
Base Unit	RR48-R	RR48
	<b>\$10,735</b>	<b>\$10,735</b>
Foam Filled Tires (at time of order)	ADD	ADD
	<b>\$252</b>	<b>\$252</b>

Universal Options	Part Number	RR48
Side Cutters (set)	RRSCK	<b>\$948</b>



### ROTORAKE RR60-RR96

- The RotoRake's hydraulic bi-directional rotor allows for operation in both directions
- Features a 25 degree angle and 28 degree tilt for easy swaling and ditching
- Dual-motor design delivers 40% more torque and eliminates outside bearings and chains

RotoRake	RR60		RR72		RR84		RR96	
Dimensions (WLH)	69 X 63 X 34"		81 X 63 X 34"		93 X 63 X 34"		105 X 63 X 34"	
Working Width	60"		72"		84"		96"	
Working Width (Angled 25°)	55"		65"		76"		87"	
Weight (lbs)	1,150		1,220		1,280		1,380	
Cont. PSI	3,000 MAX		3,000 MAX		3,000 MAX		3,000 MAX	
PTO Required	N/A		N/A		N/A		N/A	
Roto Speed	230-450 RPM		230-450 RPM		230-450 RPM		230-450 RPM	
Hyd. GPM Range	18-30		18-30		18-30		20-35	
Rotor Torque @ 2500 PSI	550 FT-LBS		550 FT-LBS		550 FT-LBS		640 FT-LBS	
Mount Type	SKID STEER		SKID STEER		SKID STEER		SKID STEER	
Gauge Wheels Included	2		2		2		2	
Tilt	MANUAL		MANUAL		MANUAL		MANUAL	
Angle	MANUAL		MANUAL		MANUAL		MANUAL	
Base Unit	RR60	<b>\$13,750</b>	RR72	<b>\$14,690</b>	RR84	<b>\$15,690</b>	RR96	<b>\$17,020</b>
Rotorake with Angle Kit*	RR60-RRAKHA	<b>\$15,617</b>	RR72-RRAKHA	<b>\$16,557</b>	RR84-RRAKHA	<b>\$17,557</b>	RR96-RRAKHA	<b>\$18,887</b>
Rotorake with Angle and Tilt Kit*	RR60-RRTKHA	<b>\$15,617</b>	RR72-RRTKHA	<b>\$17,557</b>	RR84-RRTKHA	<b>\$18,557</b>	RR96-RRTKHA	<b>\$19,887</b>
Rotorake with Angle and Tilt Kit (on the fly)*	RR60-RRHTAVK	<b>\$18,645</b>	RR72-RRHTAVK	<b>\$19,585</b>	RR84-RRHTAVK	<b>\$20,585</b>	RR96-RRHTAVK	<b>\$21,915</b>
Foam Filled Tires (at time of order)	ADD	<b>\$505</b>	ADD	<b>\$505</b>	ADD	<b>\$505</b>	ADD	<b>\$505</b>

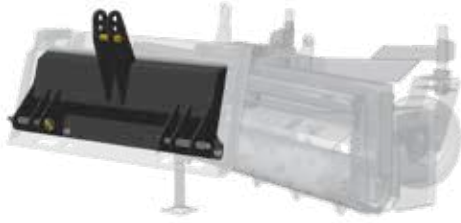
Universal Options	Part Number	RR60	RR72	RR84	RR96
Angle Cylinder & Hose Kit (Used On tractor Remotes)	RRAK	<b>\$420</b>	<b>\$420</b>	<b>\$420</b>	<b>\$420</b>
Tilt Cylinder & Hose Kit (Used On tractor Remotes)	RRTK	<b>\$420</b>	<b>\$420</b>	<b>\$420</b>	<b>\$420</b>
12V Diverter Valve & Hydraulic Cylinder Kit (Angle)*	RRAKHA	<b>\$1,867</b>	<b>\$1,867</b>	<b>\$1,867</b>	<b>\$1,867</b>
12V Diverter Valve & Hydraulic Cylinder Kit (Tilt & Angle)*	RRTKHA	<b>\$2,867</b>	<b>\$2,867</b>	<b>\$2,867</b>	<b>\$2,867</b>
Rotorake with Angle and Tilt Kit (on the fly)*	RRHTAVK	<b>\$4,895</b>	<b>\$4,895</b>	<b>\$4,895</b>	<b>\$4,895</b>
CAT I & 2 3PH Plate	121933	<b>\$1,015</b>	<b>\$1,015</b>	<b>\$1,015</b>	<b>\$1,015</b>
RotoRake Side Cutters / Set	RRSCK	<b>\$948</b>	<b>\$948</b>	<b>\$948</b>	<b>\$948</b>
Foam Filled Tires (price per tire)	108110F	<b>\$312</b>	<b>\$312</b>	<b>\$312</b>	<b>\$312</b>

\*WIRING KIT NOT INCLUDED, SEE PAGE 20 FOR WIRING KIT SELECTION

# ROTORAKE OPTIONS

## CAT I & II HITCH

- CAT I & II hitch for your RotoRake



## REMOTE-CONTROLLED HYDRAULIC KIT

- Hydraulic option for the RotoRake
- 12 volt Hydraulic valve option to tilt and angle
- You can choose one or both of these options

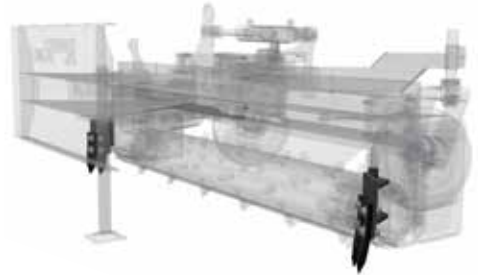


## FOAM FILLED TIRES

- Uses the same tire as air filled
- Weighs 39 lbs. (24 lbs. heavier than air filled)
- Tires are sold individually, order correct quantity for your unit.

## SIDE CUTTERS

- Pin on front or rear depending on desired direction of travel



## WIRING HARNESS

- See page 20 for available kits



DIRECT



MANUAL

# ROTORAKE WIRING KITS

## WIRING KITS FOR USE WITH 12V DIVERTER VALVES

RotoRake Wiring Kits	Part Number	Price
ASV Skidsteers 8 Pin Wiring Kit (Deutsch Plug)	EWKD8ASV	\$402
Bobcat Skidsteers 14 Pin Wiring Kit (Deutsch Plug)	EWKD14BO	\$402
Bobcat Skidsteers 7 Pin Wiring Kit (Deutsch Plug)	EWKD7BO	\$1,177
Case Skidsteers 14 Pin Wiring Kit (Deutsch Plug)	EWKD14CNH	\$402
Caterpillar Skidsteers 14 Pin Wiring Kit (Deutsch Plug)	EWKD14CAT	\$402
Caterpillar Skidsteers 8 Pin Wiring Kit (Deutsch Plug)	EWKD8CAT	\$402
Gehl Skidsteers 14 Pin Wiring Kit (Deutsch Plug)	EWKD14CAT	\$402
JCB Skidsteers 14 Pin Wiring Kit (Deutsch Plug)	EWKD14KU	\$402
John Deere 244J Loaders 14 Pin Wiring Kit (Deutsch Plug)	EWKD14JD	\$402
John Deere Skidsteers 14 Pin Wiring Kit (Deutsch Plug)	EWKD14JD	\$402
Kubota Skidsteers 14 Pin Wiring Kit (Deutsch Plug)	EWKD14KU	\$402
New Holland Skidsteers 14 Pin Wiring Kit (Deutsch Plug)	EWKD14CNH	\$402
Takeuchi Skidsteers 14 Pin Wiring Kit (Deutsch Plug)	EWKD14TA	\$402
Volvo Skidsteers 14 Pin Wiring Kit (Deutsch Plug)	EWKD14KU	\$402
Wacker Neuson Skidsteers 14 Pin Wiring Kit (Deutsch Plug)	EWKD14KU	\$402
Manual Toggle Switch with 12 Volt Cigarette Plug	RRMTS01	\$402

*NOTE: REQUIRES 2 MOMENTARY ELECTRIC OUTPUTS*

## WIRING KITS FOR USE WITH ON THE FLY TILT & ANGLE VALVES

RotoRake Wiring Kits (RRHTAVK)	Part Number	Price
ASV 8 PIN	EWKV8ASV	\$775
ASV 14 PIN	EWKV14CAT	\$775
BOBCAT 14 PIN	EWKV14BO	\$775
BOBCAT 7 PIN	EWKV7BO	\$2,565
CASE 14 PIN	EWKV14CNH	\$775
CAT 14 PIN	EWKV14CAT	\$775
CAT 8 PIN	EWKV8CAT	\$775
GEHL 14 PIN	EWKV14CAT	\$775
HYUNDAI 14 PIN	EWKV14CAT	\$775
JCB 14 PIN	EWKV14CAT	\$775
JOHN DEERE 14 PIN	EWKV14JD	\$775
KIOTI 14 PIN	EWKV14CAT	\$775
KUBOTA 14 PIN	EWKV14CAT	\$775
MANITOU 14 PIN	EWKV14CAT	\$775
MUSTANG 14 PIN	EWKV14CAT	\$775
NEW HOLLAND 14 PIN	EWKV14CAT	\$775
SANY 14 PIN	EWKV14CAT	\$775
TAKEUCHI 14 PIN	EWKV14CAT	\$775
TEREX 8 PIN	EWKV8ASV	\$775
VOLVO 14 PIN	EWKV14CAT	\$775
WHACKER NEUSON	EWKV14WN	\$775
YANMAR 14 PIN	EWKV14CAT	\$775
MANUAL TOGGLE	RRMTSV01	\$1,695

*NOTE: RRHTAVK REQUIRES 4 MOMENTARY ELECTRIC OUTPUTS*

# ROTORAKE PTO

LANDSCAPING



## ROTORAKE P.T.O

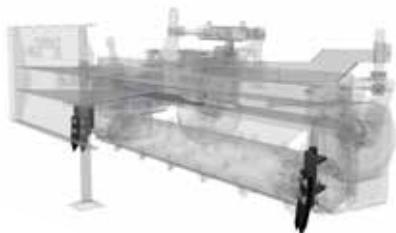
- Power take-off for your RotoRake unit drives a pump which drives the rotor motors
- Features a 25 degree angle and 28 degree tilt for easy swaling and ditching
- Oscillating gauge wheels lock in level position for the (PTO) three point hitch use
- Dual-motor design delivers 40% more torque and eliminates outside bearings and chains

RotoRake P.T.O	RR60PTO18G	RR72PTO18G	RR84PTO18G
Dimensions (WLH)	69 X 63 X 34"	81 X 63 X 34"	93 X 63 X 34"
Working Width	60"	72"	84"
Working Width (Angled 25°)	55"	65"	76"
Weight (lbs)	1,350	1,420	1,500
Cont. PSI	3,000 MAX	3,000 MAX	3,000 MAX
PTO Required	540RPM	540RPM	540RPM
Roto Speed	230-450 RPM	230-450 RPM	230-450 RPM
Rotor Torque @ 2500 PSI	550 FT-LBS	550 FT-LBS	550 FT-LBS
Mount Type	3PH CAT 1 & 2	3PH CAT 1 & 2	3PH CAT 1 & 2
Gauge Wheels Included	2	2	2
Tilt	MANUAL	MANUAL	MANUAL
Angle	HYDRAULIC	HYDRAULIC	HYDRAULIC
Base Unit	<b>\$23,455</b>	<b>\$24,628</b>	<b>\$26,738</b>
Foam Filled Tires (add to base)	<b>\$505</b>	<b>\$505</b>	<b>\$505</b>

Universal Options	Part Number	RR60PTO18G	RR72PTO18G	RR84PTO18G
Tilt Cylinder & Hose Kit (Used On tractor Remotes)	RRTK	<b>\$420</b>	<b>\$420</b>	<b>\$420</b>
RotoRake Side Cutters / Set	RRSCK	<b>\$948</b>	<b>\$948</b>	<b>\$948</b>
Foam Filled Tires (price per tire)	108110F	<b>\$312</b>	<b>\$312</b>	<b>\$312</b>
Manual Angling Cylinder	136774	<b>\$395</b>	<b>\$395</b>	<b>\$395</b>

## SIDE CUTTERS

- Pin on front or rear depending on desired direction of travel



## TILT CYLINDER & HOSE KIT

- Used on tractor remotes
- Requires a second set of remotes

## MANUAL ANGLING CYLINDER

- Replaces Hydraulic cylinder if no Hydraulic remotes available
- 3 position angling



## FOAM FILLED TIRES

- Uses the same tire as air filled
- Weighs 39 lbs. (24 lbs. heavier than air filled)
- Tires are sold individually, order correct quantity for your unit.

# TRAIL PRO

LANDSCAPING



## ABOUT THE TRAIL PRO

- Reclaim & reuse trail material
- Angled blades removes high spots and level the trail
- Spinning rotor pulverizes and separates root balls and stone dust
- Carbide-tipped teeth spins at 540 RPM
- Leveling plate made from 3/4" wear resistant steel
- Unique edging disc (one on each side) removes grass and weeds from side of trail
- Hydraulic top link is included



TrailPro	TP50	TP60	TP72	TP96
Dimensions (WLH)	55 X 66 X 34"	67 X 66 X 34"	79 X 66 X 34"	103 X 66 X 34"
Working Width	50"	60"	72"	96"
Weight lbs	1,250	1,475	1,600	1,900
Hitch	CAT I	CAT I	CAT I	CAT II
Power	540 PTO	540 PTO	540 PTO	540 PTO
Base Unit (Hyd. Top Link Included)	<b>\$23,350</b>	<b>\$23,900</b>	<b>\$25,020</b>	<b>\$29,250</b>

Model Specific Options	Part Number	Price	Part Number	Price	Part Number	Price	Part Number	Price
Rear Gauge Roller	TP50RR	<b>\$2,155</b>	TP60RR	<b>\$2,169</b>	TP72RR	<b>\$2,275</b>	TP96RR	<b>\$2,750</b>

## REAR GAUGE ROLLER

- Packs down materials that cannot be drag-packed, such as wood chips and loose material



# LR30 LAWN ROLLER SELF PROPELLED

LANDSCAPING



## ABOUT THE LAWN ROLLER

- Operates forward and reverse
- Unit Easily movable without starting the engine
- Powered by a 5.5 horsepower Honda gasoline engine
- Eaton hydrostatic transmission
- Power is delivered to the drum with a series of sprockets, jack shaft and chains

Lawn Roller Self Propelled	LR30
Dimensions (WLH)	35 X 60 X 48"
Drum Diameter	30" X 24"
Weight lbs (Dry)	480
Weight lbs (w/ Water)	880
Lawn Roller	<b>\$8,526</b>

Universal Options	Part Number	Price
Checker Plate Roller Upgrade	117662	<b>\$150</b>
Ride on attachment	ROA	<b>\$2,825</b>



## RIDE ON ATTACHMENT KIT

- Kit includes a pin on seat and roller allowing the operator to run the unit while seated
- Ideal for large properties
- Weight 125 lbs.

# MULTI-PACKER

LANDSCAPING



SHOWN WITH OPTIONS

## ABOUT THE MULTI-PACKER

- Slots for optional ripper teeth
- Floating drum scraper
- 24" diameter steel drum
- Drum can be filled with water for increased compaction
- Storage stand
- Mounts for optional leveling blade
- CAT I and II Hitch



ANOTHER ANGLE OF MULTI-PACKER

Multi-Packer	MP36	MP48	MP60	MP72	MP84	MP96
Dimensions (WLH)	40 X 30 X 37"	52 X 30 X 37"	64 X 30 X 37"	76 X 30 X 37"	88 X 30 X 37"	100 X 30 X 37"
Working Width	36"	48"	60"	72"	80"	96"
Steel Drum Diameter	24"	24"	24"	24"	24"	24"
Weight lbs (Dry)	565	610	712	815	940	1,025
Weight lbs (w/ Water)	960	1,190	1,460	1,765	1,930	2,300
Base Unit	<b>\$4,299</b>	<b>\$4,572</b>	<b>\$4,880</b>	<b>\$5,270</b>	<b>\$5,716</b>	<b>\$6,433</b>

Model Specific Options	Part Number	Price	Part Number	Price	Part Number	Price	Part Number	Price	Part Number	Price	Part Number	Price
Leveling Blade	MPLB36	<b>\$899</b>	MPLB48	<b>\$918</b>	MPLB60	<b>\$1,014</b>	MPLB72	<b>\$1,116</b>	MPLB84	<b>\$1,250</b>	MPLB96	<b>\$1,371</b>

Universal Options	Part Number	Price
Ripper Tooth	MG011	<b>\$36</b>
Ripper Shank	MG012	<b>\$47</b>
Replaceable Shank Tip- Chromium Carbon	GEN43	<b>\$38</b>
Replaceable Shank Tip- Chromium Carbon (Carbide Tip)	GEN43C	<b>\$88</b>
Tow Hitch/Draw Bar	MPTH	<b>\$698</b>

Ripper Qty.	MP36	MP48	MP60	MP72	MP84	MP96
6" Spacing	5	7	9	11	13	15
8" Spacing	4	6	8	8	10	12

## TOW HITCH

- Add tow hitch to tow behind tractor or appropriate vehicle



## RIPPER TEETH

- Ripper teeth to rip up and soften ground
- Adjustable in 1" increments



## RIPPER SHANK (MG012)

- Resistant to wear
- Shank used along with replaceable tip



## LEVELING BLADE

- Redistributes and levels material



## RIPPER TOOTH (MG011)

- Resistant to wear
- Replaceable tooth



## REPLACEABLE SHANK TIP

- Resistant to wear



# TREE PULLER

LANDSCAPING



## ABOUT THE TREE PULLER

- 28" Single pivoting jaw
- Jaw opens up to 14" wide
- Open plate design increases visibility
- AR400 Serrated teeth provide firm hold
- Greasable jaw pivot pins (1.5")
- Protective Hose Wrap
- Optional - Bolt on Guard Frame
- Optional - Guard Insert (requires frame)

Tree Puller	TRP2814	
Max Jaw Opening (inches)	14	
Jaw Material (inches)	½" AR400	
Max. Cylinder Force	21,000 LBS	
Cylinder Diameter (inches)	3	
Greasable Jaw Pivot Pins (inches)	1.5"	
Overall Width (inches)	51.25"	
Overall Length (inches)	35.25"	
Overall Height (inches)	20.5"	
Machine Weight (lbs)	350	
Max Continuous Operating Pressure	3,000 (PSI)	
Minimum GPM	10	
Base Unit	TRP2814	<b>\$3,150</b>
Base Unit w/ALO Hitch	TRP2814AO600	<b>\$3,150</b>
Base Unit (Blank) (Hoses and couplers not included)	TRP2814BB	<b>\$2,900</b>

Universal Options	Part Numbers	Price
Guard (Push Bar)	TRPGF	<b>\$695</b>
Guard Insert (requires Push bar)	TRPGR	<b>\$325</b>

## GUARD (TRPGF)

- An optional bolt on guard frame provides protection for your power unit as well as helps manage the load



## GUARD INSERT (TRPGR)

- The guard insert option adds additional protection reducing the amount of poke through from branches  
*Requires optional Guard*



# BRUSH MULCHER

LANDSCAPING

**NEW**



## ABOUT THE BRUSH MULCHER

- Designed to mulch branches, light timber, saplings, brush, and other tough vegetation
- Hinged rubber containment guard
- 2 position hitch, center or 14" offset to right
- Indexable teeth that can easily be replaced
- Single carbon fiber timing belt
- Adjustable ledger bar
- High strength steel housing
- Adjustable skid shoes
- Engineered for quick, hassle-free maintenance
- 540 rpm PTO
- Machined anti-wrap protection
- Remote grease fittings to easily grease bearings

Brush Mulcher	BRM60
Overall Width	72"
Rotor Width	60"
Tractor Recommended HP	30 TO 50
Maximum HP	50
Three Position Cutting depth	1" BELOW, LEVEL, 1" ABOVE
Cutters	INDEXABLE CARBIDE
Number of Cutters	72
Rotor Diameter (tooth tips)	16-1/2"
Hitch Size	CAT 1
Quick Hitch Compatible	YES
Unit Weight (lbs)	1,100
Hydraulic Requirement	NO
Base Unit	<b>\$13,825</b>

Universal Options	Part Number	Price
Push Bar (3 Position Manual)	BRM60PB	<b>\$990</b>
Push Bar (Hydraulic)	BRM60PBHYD	<b>\$1,275</b>
Hydraulic Deflector	BRM60DF	<b>\$1,400</b>

## WEARSHARP® TOOTH

- Carbide tip
- Indexable 3 times for extended use



Wear Parts	Part Number	Price
WearSharp® Tooth	700-WS	<b>\$31</b>
Nut for tooth	500-NUT	<b>\$1.75</b>
Spacer	700-SPACER	<b>\$2</b>
25 pc. Kit (incl. nuts & spacers)	700-WS25KIT	<b>\$675</b>
100 pc. Kit (incl. nuts & spacers)	700-WS100KIT	<b>\$2,300</b>

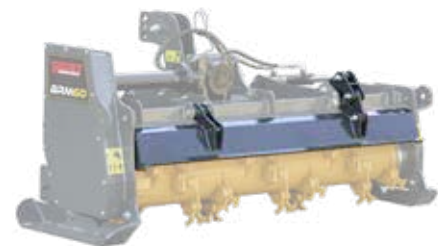
## PUSH BAR

- Optional push bar guides trees and saplings to fall safely away from the tractor, ensuring controlled, safer mulching
- 3 position manual adjustment as standard
- A hydraulic cylinder is available as an upgrade for an additional cost



## HYDRAULIC DEFLECTOR

- Deflector controls flying debris
- Hydraulic Deflector option requires hydraulic remotes for operation
- Increases mulching, decreases debris size



# STUMP GRINDER

3PH PTO Direct Drive

## R25PD DIRECT DRIVE FEATURES

- Quick hitch compatible
- Category I & II compatible
- Slip clutch protection
- 700 Series WearSharp© carbide teeth
- One way cutting
- Park stand



R25PD

Stump Grinder	R25PD
Recommended HP	20-45
PTO Speed (input)	540 RPM
Rotor Size	25"
Tooth Construction	CARBIDE BOLT INTO POCKET
Number of Teeth	18
Cutting Wheel Speed	540 RPM
Cutting Height (above grade)	10"
Cutting Height (below grade)	7"
Cutting Depth (per pass)	2.25"
Cutting Width (per pass)	22"
Protection	SLIP CLUTCH
Hitch	CAT I
Quick Hitch Compatible	YES
Length	37"
Width	45"
Unit Weight (lbs)	425
Base Unit	<b>\$3,820</b>

Options	Part Number	Price
Extensions	132369	<b>\$300</b>
Debris Screen 10'x5' (4 posts)	DS510	<b>\$550</b>

Wear Parts	Part Number	Price
WearSharp© Tooth	700-WS	<b>\$26</b>
Nut for tooth	500-NUT	<b>\$1.75</b>
Spacer	700-SPACER	<b>\$2</b>
25 pc. Kit (incl. nuts & spacers)	700-WS25KIT	<b>\$560</b>
100 pc. Kit (incl. nuts & spacers)	700-WS100KIT	<b>\$1,900</b>

# STUMP GRINDER

3PH PTO Driven Hydraulic Swing

## R25PS HYDRAULIC SWING FEATURES

- Quick hitch compatible
- Category I & II compatible
- Slip clutch protection
- 700 Series WearSharp® carbide teeth
- Greaseable pins
- One way cutting
- Extended frame for stable footing
- Durable HDPE deflector for help contain debris
- Depth/lift gauge

Stump Grinder	R25PSS	R25PSV
Recommended HP	25-80 HP	
PTO Speed (input)	540 RPM	
Rotor Size	25"	
Tooth Construction	CARBIDE BOLT INTO POCKET	
Number of Teeth	18	
Cutting Wheel Speed	1,026 RPM	
Cutting Height (above grade)	20"	
Cutting Height (below grade)	6"	
Cutting Depth (per pass)	2.25"	
Cutting Width (per pass)	22"	
Swing Arc	55°	
Protection	SLIP CLUTCH	
Hitch	CAT I & II	
Quick Hitch Compatible	YES	
Required Remotes	2	1
Length	42"	
Width	72"	
Unit Weight (lbs)	885	920
Base Unit	<b>\$7,960</b>	<b>\$9,075</b>

Options	Part Number	Price
R25PS Valve (incl. hoses)	STGV	<b>\$1,620</b>
Debris Screen 10'x5' (4 posts)	DS510	<b>\$550</b>

Wear Parts	Part Number	Price
WearSharp® Tooth	700-WS	<b>\$26</b>
Nut for tooth	500-NUT	<b>\$1.75</b>
Spacer	700-SPACER	<b>\$2</b>
25 pc. Kit (incl. nuts & spacers)	700-WS25KIT	<b>\$560</b>
100 pc. Kit (incl. nuts & spacers)	700-WS100KIT	<b>\$1,900</b>



### R25PSS

- Requires 2 remotes



### R25PSV

- STGV valve included
- Only requires 1 remote

# STUMP GRINDER

## R25PS VALVE

- Required for tractors with one remote
- Mounted on ergonomic adjustable arm
- Includes hoses



## DEBRIS SCREEN

- Used in areas where debris from the stump grinder needs to be contained
- 10' wide by 5' high 9 oz 1000D woven PVC coated polyester
- Includes 4 posts with integrated ground spike



## WEARSHARP® TOOTH

- Carbide tip
- Indexable 3 times for extended use



## R25PD EXTENSIONS

- Hitch extensions



# STUMP GRINDER

Hydraulic Direct Drive - Compact



R18HD

## HYDRAULIC DIRECT DRIVE FEATURES

- 18" Rotor
- 1/2" Thick rotor
- 700 Series WearSharp® carbide teeth
- 10 Teeth
- 2.25" Cutting Depth Max. (per pass)
- 1 Hydraulic Remote Required
- Optional Hose protector shield available

Model	R18HDMB1015G	R18HDMS1015G	R18HDSK1520G	R18HDBE1015G	R18HDBE1520G
Rotor dia	18"			18"	
Style	DIRECT			DIRECT	
Number of Teeth	10			10	
Cutting Wheel Speed	1450-2180 RPM			1450-2180 RPM	
Cutting Depth (below grade)	4.5"			4.5"	
Weight (shipping) (lbs)	240			240	
Dimensions - L x W (shipping)	37" X 36"			37" X 36"	
Flow Limited	NONE		20 GPM	NONE	20 GPM
Hitch Type	MINI BOBCAT	MINI SKID STEER	UNIVERSAL SKID STEER	BLANK (EXCAVATOR)	
Motor	26CC GEAR MOTOR	26CC GEAR MOTOR	39CC GEAR MOTOR	26CC GEAR MOTOR	39CC GEAR MOTOR
GPM	10 TO 15	10 TO 15	15 TO 20	10 TO 15	15 TO 20
Base Unit	\$4,040	\$3,900	\$4,200	\$3,900	\$4,200

Options	Part Number	Price
Hose Protector Shield	134770-AA	\$130
Debris Screen 10'x5' (4 posts)	DS510	\$550

Wear Parts	Part Number	Price
WearSharp® Tooth	700-WS	\$26
Nut for tooth	500-NUT	\$1.75
Spacer	700-SPACER	\$2
25 pc. Kit (incl. nuts & spacers)	700-WS25KIT	\$560
100 pc. Kit (incl. nuts & spacers)	700-WS100KIT	\$1,900

# STUMP GRINDER

Hydraulic Direct Drive



R25HD

## HYDRAULIC DRIVE FEATURES

- 25" Rotor
- 3/4" Thick rotor
- 700 Series WearSharp® carbide teeth
- 18 Teeth
- 2.25" Cutting Depth Max. (per pass)
- 1 Hydraulic Remote Required
- Optional Hose protector shield available

Model	R25HDSK1620G	R25HDSK2026G	R25HDSK2738P	R25HDBE1620G	R25HDBE2026G	R25HDBE2738P
Rotor dia	25"			25"		
Style	DIRECT			DIRECT		
Number of Teeth	18			18		
Cutting Wheel Speed	1135-1590 RPM			1135-1590 RPM		
Cutting Depth (below grade)	7"			7"		
Weight (shipping) (lbs)	480-500			480-500		
Dimensions - L x W (shipping)	41" X 47"			41" X 47"		
Flow Limited	20 GPM	26 GPM	NONE	20 GPM	26 GPM	NONE
Hitch Type	UNIVERSAL SKID STEER			BLANK (EXCAVATOR)		
Motor	50CC GEAR MOTOR	63CC GEAR MOTOR	90CC BENT AXIS PISTON MOTOR	50CC GEAR MOTOR	63CC GEAR MOTOR	90CC BENT AXIS PISTON MOTOR
GPM	16 TO 20	20 TO 26	27 TO 38	16 TO 20	20 TO 26	27 TO 38
Base Unit	<b>\$6,000</b>	<b>\$6,400</b>	<b>\$7,480</b>	<b>\$6,000</b>	<b>\$6,400</b>	<b>\$7,680</b>

Options	Part Number	Price
Hose Protector Shield	134771-AA	<b>\$140</b>
Debris Screen 10'x5' (4 posts)	DS510	<b>\$550</b>

Wear Parts	Part Number	Price
WearSharp® Tooth	700-WS	<b>\$26</b>
Nut for tooth	500-NUT	<b>\$1.75</b>
Spacer	700-SPACER	<b>\$2</b>
25 pc. Kit (incl. nuts & spacers)	700-WS25KIT	<b>\$560</b>
100 pc. Kit (incl. nuts & spacers)	700-WS100KIT	<b>\$1,900</b>

# STUMP GRINDER

Hydraulic Drive Swing

## HYDRAULIC DRIVE SWING FEATURES

- 25" Rotor
- 3/4" Thick rotor
- 700 Series WearSharp® carbide teeth
- 18 Teeth
- 2.25" Cutting Depth Max. (per pass)
- 1 Hydraulic Remote Required
- 41" of travel
- Adjustable stabilizing feet
- Optional Hose protector shield available



R25HS

Model	R25HSSK1620G	R25HSSK2026G	R25HSSK2738P
Rotor dia	25"		
Style	SWING		
Number of Teeth	18		
Cutting Wheel Speed	1135-1590 RPM		
Cutting Depth (below grade)	7"		
Weight (shipping) (lbs)	670		
Dimensions - L x W (shipping)	83" X 47"		
Flow Limited	20 GPM	26 GPM	NONE
Hitch Type	UNIVERSAL SKID STEER		
Motor	50CC GEAR MOTOR	63CC GEAR MOTOR	90CC BENT AXIS PISTON MOTOR
GPM	16 TO 20	20 TO 26	27 TO 38
Base Unit	<b>\$8,900</b>	<b>\$9,000</b>	<b>\$10,610</b>

NOTE: WIRING KIT NOT INCLUDED, SELECT OPTION FROM 12V DIVERTER VALUES ON PAGE 20

Options	Part Number	Price
Hose Protector Shield	134780-AA	<b>\$145</b>
Bi-Directional Wheel Parts Kit	134868-AA	<b>\$600</b>
Debris Screen 10'x5' (4 posts)	DS510	<b>\$550</b>

Wear Parts	Part Number	Price
WearSharp® Tooth	700-WS	<b>\$26</b>
Nut for tooth	500-NUT	<b>\$1.75</b>
Spacer	700-SPACER	<b>\$2</b>
25 pc. Kit (incl. nuts & spacers)	700-WS25KIT	<b>\$560</b>
100 pc. Kit (incl. nuts & spacers)	700-WS100KIT	<b>\$1,900</b>

# STUMP GRINDER

## WEARSHARP® TOOTH

- Carbide tip
- Indexable 3 times for extended use



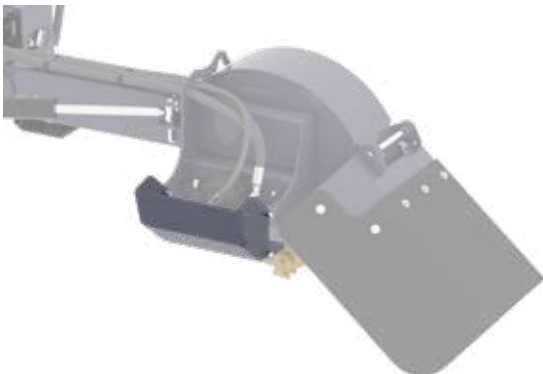
## R18HD HOSE PROTECTOR SHIELD

- Hose protector shield
- Optional shield increases protection to hose and motor assembly.



## R25HS HOSE PROTECTOR SHIELD

- Hose protector shield
- Optional shield increases protection to hose and motor assembly.



## DEBRIS SCREEN

- Used in areas where debris from the stump grinder needs to be contained
- 10' wide by 5' high 9 oz 1000D woven PVC coated polyester
- Includes 4 posts with integrated ground spike



## R25HD HOSE PROTECTOR SHIELD

- Hose protector shield
- Optional shield increases protection to hose and motor assembly.



# EARTH BORE AUGER DRIVES

LANDSCAPING

## ABOUT THE EARTH BORE

- Robust compact planetary auger drive
- Mounts available for skid steer loaders, and tractor front end loaders
- Flow ranges between 6-35 GPM
- The AS series are ideal for farm, ranch, construction, and rental applications
- The AH model has higher torque output and has a field serviceable output shaft.



FDHAS-1530US



AS-1530



AH-1530

Specifications	AS-0615	AS-1020	AS-1530	AS-2035	AH-1530
Dimensions (Drive only)	10 X 10 X 28"				11 X 11 X 35"
Weight Drive	150 LBS.	150 LBS.	150 LBS.	151 LBS.	185 LBS.
Output Shaft Size	2" HEX				
Max. Dia. Dirt	18 IN	30 IN	36 IN	36 IN	36 IN
Max. Dia. Rock	18 IN	24 IN	36 IN	36 IN	36 IN
Gear Train Type	PLANETARY				
Min./Max. Flow	6-15 GPM	10-20 GPM	15-30 GPM	20-35 GPM	15-30 GPM
Max. Continuous PSI	3000 PSI				
Max Intermittent PSI	3500 PSI				
Torque Output @3000 PSI	1,512 FT. LBS.	1,747 FT. LBS.	2,511 FT. LBS.	3,025 FT. LBS.	3,062 FT. LBS.
Field Serviceable	NO				YES
Limited Warranty	4 YEARS				5 YEARS

Drive Only	\$2,705	\$2,875	\$2,960	\$3,140	\$4,150
Universal Skidsteer Kit (Frame, Drive, Hoses)	FDHAS-0615US	FDHAS-1020US	FDHAS-1530US	FDHAS-2035US	FDHAS-1530US
	\$3,860	\$4,030	\$4,115	\$4,310	\$5,320
Mini Skidsteer Kit (Frame, Drive, Hoses)	FDHAS-0615MS	FDHAS-1020MS	FDHAS-1530MS	FDHAS-2035MS	FDHAS-1530MS
	\$3,860	\$4,030	\$4,115	NA	NA
Mini Skidsteer Kit for Bobcat (Frame, Drive, Hoses)	FDHAS-0615MBS	FDHAS-1020MBS	FDHAS-1530MBS	FDHAS-2035MBS	FDHAS-1530MBS
	\$3,860	\$4,030	\$4,115	NA	NA
Blank Frame Kit (Frame, Drive, Hoses)	FDHAS-0615BL	FDHAS-1020BL	FDHAS-1530BL	FDHAS-2035BL	FDHAS-1530BL
	\$3,760	\$3,930	\$4,015	\$4,210	\$5,220

Speed Output	AS-0615	AS-1020	AS-1530	AS-2035	AH-1530
6 GPM	36 RPM	NA	NA	NA	NA
10 GPM	61 RPM	53 RPM	NA	NA	NA
15 GPM	91 RPM	79 RPM	55 RPM	NA	45 RPM
20 GPM	NA	105 RPM	73 RPM	61 RPM	60 RPM
25 GPM	NA	NA	92 RPM	76 RPM	75 RPM
30 GPM	NA	NA	110 RPM	91 RPM	90 RPM
35 GPM	NA	NA	NA	106 RPM	NA

# AUGER BITS

## DIRT AUGERS

- Suited for drilling in displaceable soils such as sand, silt, or clay
- Features a hardened cast boring

Model	Shaft	Diameter	Length	Price
DA06200H	2" HEX	6	48"	\$485
DA09200H	2" HEX	9	48"	\$675
DA12200H	2" HEX	12	48"	\$785
DA15200H	2" HEX	15	48"	\$985
DA18200H	2" HEX	18	48"	\$1,085
DA24200H	2" HEX	24	48"	\$1,185
DA30200H	2" HEX	30	48"	\$1,850
DA36200H	2" HEX	36	48"	\$2,450

- Bolt-on tooth design
- 48" length
- Semi-Double flight design
- 5/16" Flighting
- 3.5" Diameter Pilot



## ROCK AUGERS

- Suited for cutting through tough cobble, boulders, fractured, or solid rock
- Bullet teeth arranged at optimal cutting angles

Model	Shaft	Diameter	Length	Price
RA06200H	2" HEX	6	48"	\$1,425
RA09200H	2" HEX	9	48"	\$1,795
RA12200H	2" HEX	12	48"	\$1,950
RA15200H	2" HEX	15	48"	\$3,120
RA18200H	2" HEX	18	48"	\$3,200
RA24200H	2" HEX	24	48"	\$3,985

- Bolt-on tooth design
- 48" length
- Semi-Double flight design
- 5/16" Flighting
- 3.5" Diameter Pilot



## TREE SHRUB AUGERS

- Suited for drilling in displaceable soils such as sand, silt, or clay
- Features a hardened cast boring

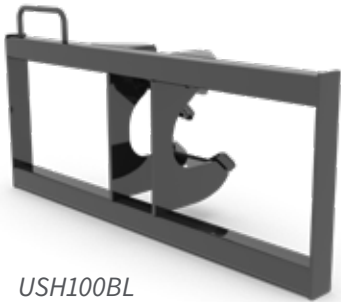
Model	Shaft	Diameter	Length	Price
TA18200H	2" HEX	18	48"	\$1,320
TA24200H	2" HEX	24	48"	\$1,525
TA30200H	2" HEX	30	48"	\$2,000
TA36200H	2" HEX	36	48"	\$2,325

- Bolt-on tooth design
- 48" length
- 5/16" Flighting
- 3.5" Diameter Pilot

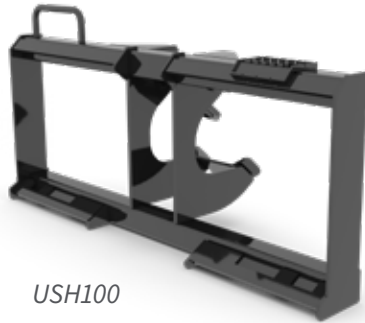


# AUGER ACCESSORIES

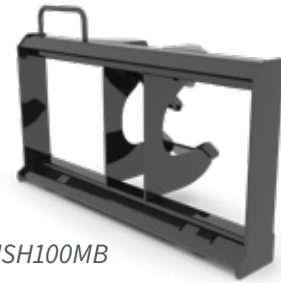
Mount Parts	Description	Price
USH100	SKID STEER QUICK ATTACH FRAME WITH SWIVEL	\$855
USH1400	1,400 LBS BALLASTED SKID STEER MOUNT	\$6,075
USH100MER2M2	MERLO FRAME	\$2,100
USH100M	MINI SKID STEER HITCH WITH SWIVEL	\$800
USH100MB	MINI BOBCAT SKID STEER HITCH WITH SWIVEL	\$825
USH100BL	BLANK FRAME WITH SWIVEL	\$715
USH100BLR	BLANK FRAME WITH SWIVEL (RIGHT)	\$715
UWH100	UNIVERSAL WELD-ON MOUNT	\$540
123912	SWIVEL CASTING	\$215
H-KIT-96F	TWO 1/2" HOSES 96" LONG , FLAT FACE COUPLERS	\$300
H-KIT-96	TWO 1/2" HOSES 96" LONG , 10MB	\$190



USH100BL



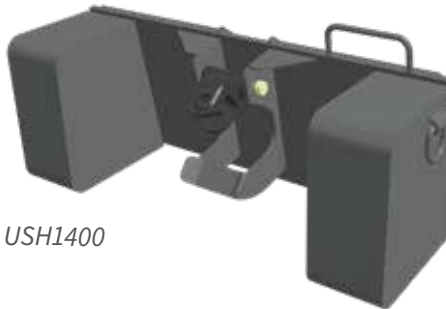
USH100



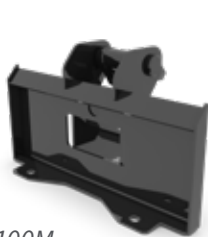
USH100MB



USH100BLR



USH1400



USH100M



UWH100

# AUGER ACCESSORIES

Extensions	Description	Price
EHF2-24	HEX 2" X 2 FOOT EXTENSION (FIXED)	\$470
EHF2-36	HEX 2" X 3 FOOT EXTENSION (FIXED)	\$590
EHF2-48	HEX 2" X 4 FOOT EXTENSION (FIXED)	\$700
EH2-24	HEX 2" X 2 FOOT EXTENSION (ADJUSTABLE*)	\$520
EH2-36	HEX 2" X 3 FOOT EXTENSION (ADJUSTABLE*)	\$630
EH2-48	HEX 2" X 4 FOOT EXTENSION (ADJUSTABLE*)	\$750
EH2-60	HEX 2" X 5 FOOT EXTENSION (ADJUSTABLE*)	\$860
EH2-72	HEX 2" X 6 FOOT EXTENSION (ADJUSTABLE*)	\$980

\* ADJUSTABLE IN 12" INCREMENTS



Adapters	Female	Male	Price
HR200-20	2" HEX	2" ROUND	\$370
HS200-20	2" HEX	2" SQUARE	\$540
HH25-20	2.5" HEX	2" HEX	\$870
RR200-25	2" ROUND	2.5" ROUND	\$340
RH200-20	2" ROUND	2" HEX	\$330
HR200-25	2" HEX	2.5" ROUND	\$330
HH25-20WC	2.5" HEX	2" HEX	\$870
RR2916-20	2 9/16"	2" ROUND	\$360
RH2916-20	2 9/16"	2" HEX	\$360
HH258-20WC	2 5/8" HEX	2" HEX	\$600



Wear Parts	Description	Price
123909	DIRT PILOT SB35	\$52
123910	DIRT TOOTH 35G	\$10
123911	DIRT TOOTH 35	\$10
138167	DIRT TOOTH SQUARE HOLE	\$12
123907	CARBIDE - DIRT PILOT	\$185
123908	CARBIDE - DIRT TOOTH	\$48
124453	CARBIDE - ROCK PILOT	\$625
115185	CARBIDE - BULLET TOOTH	\$17



123908



123911



123910



138167



115185



124453



123909



123907

# MULTI-GROOMER

EQUESTRIAN



## ABOUT THE MULTI-GROOMER

- Heavy duty side rub rails
- Double row of adjustable ripper teeth are offset and have a spacing of 4" (and can also be spaced 6" & 8" apart) as well as a working depth of up to 4"
- The rear two rows of spring tines are offset and the pitch and height can be adjusted with a manual ratchet rack or an optional hydraulic cylinder
- The rear bar roller pulverizes and packs to the desired density

Multi-Groomer	MG48	MG60	MG72	MG80	MG96	MG120
Dimensions (WLH)	49 X 68 X 34"	61 X 68 X 34"	73 X 72 X 34"	81 X 72 X 34"	97 X 72 X 34"	121 X 72 X 34"
Working Width	48"	60"	72"	80"	96"	120"
Working Depth	4"	4"	4"	4"	4"	4"
Hitch	CAT I	CAT I	CAT I	CAT I	CAT II	CAT II
Weight (lbs)	580	690	750	875	945	1,500
Tires	16.5 X 6.5-8	16.5 X 6.5-8	20.5 X 8.0-10	20.5 X 8.0-10	20.5 X 8.0-10	20.5 X 8.0-10
# of Ripper Teeth	11	15	19	19	23	31
Rear Bar Roller (dia.)	12.75"	12.75"	12.75"	12.75"	12.75"	12.75"
HP Required	15 -40	20 -40	25-70	30-100	30-100	50-120
Base Unit	<b>\$5,763</b>	<b>\$6,102</b>	<b>\$6,802</b>	<b>\$7,480</b>	<b>\$8,565</b>	<b>\$11,550</b>

Multi-Groomer w/ Lift Axle	MG60-LA	MG72-LA	MG80-LA	MG96-LA	MG120-LA
Weight (lbs)	740	945	1,000	1,160	1,575
With Lift Axle	<b>\$7,876</b>	<b>\$8,468</b>	<b>\$9,145</b>	<b>\$9,925</b>	<b>\$14,086</b>

Model Specific Options	Part Number	Price	Part Number	Price	Part Number	Price	Part Number	Price	Part Number	Price	Part Number	Price
Leveling Blade	MGLB48	<b>\$504</b>	MGLB60	<b>\$564</b>	MGLB72	<b>\$663</b>	MGLB80	<b>\$701</b>	MGLB96	<b>\$775</b>	MGLB120	<b>\$990</b>
Smooth Roller	10541648	<b>\$1,702</b>	10541660	<b>\$1,804</b>	10541672	<b>\$1,900</b>	10541680	<b>\$2,104</b>	10541696	<b>\$2,331</b>	N/A	N/A
Drag Packer/Sealer Attachment	N/A	N/A	MGDPS60	<b>\$4,998</b>	MGDPS72	<b>\$5,087</b>	MGDPS80	<b>\$5,342</b>	MGDPS96	<b>\$5,661</b>	MGDPS120	<b>\$11,297</b>
Multi Groomer Grading Bar*	N/A	N/A	N/A	<b>N/A</b>	MGGB72	<b>\$1,590</b>	MGGB80	<b>\$1,765</b>	MGGB96	<b>\$1,925</b>	MGGB120	<b>\$2,450</b>

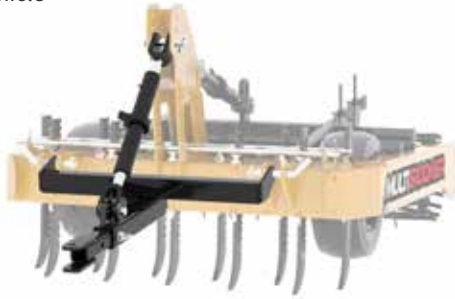
NOTE: \*GRADING BAR IS NOT COMPATIBLE WITH LIFT AXLE

Universal Options	Part Number	Price
CATI, 3PH, 22° Swivel Hitch	3PHSWL-CATI	<b>\$2,660</b>
CATII, 3PH, 22° Swivel Hitch	3PHSWL-CATII	<b>\$3,875</b>
Tow Hitch (Heavy Duty, Adjustable)	MGTH	<b>\$815</b>
Board Scraper	MGBS	<b>\$885</b>
96" Ripper Attachment (CAT II)	MGRIP96	<b>\$7,567</b>
Electric Actuator 100mm Stroke	EAC100AS	<b>\$1,600</b>
Electric Actuator 200mm Stroke	EAC200AS	<b>\$1,850</b>
Ripper Tooth	MG011	<b>\$37</b>
Ripper Shank	MG012	<b>\$47</b>
Replaceable Shank Tip- Chromium Carbon	GEN43	<b>\$38</b>
Replaceable Shank Tip- Chromium Carbon (Carbide Tip)	GEN43C	<b>\$88</b>
Ripper Cylinder 2" x 8"	20FEM08-NW	<b>\$236</b>
Hose Kit With Male Pioneer Ends	H-KIT	<b>\$183</b>

# MULTI-GROOMER

## TOW HITCH

- Add to hitch to tow behind tractor or appropriate vehicle



## SMOOTH ROLL WATER TANK

- Add this attachment to get the smoothest finish
- Add water for more compaction



## SAW TOOTH LEVELING BLADE

- Levels sand footing



## BOARD SCRAPER

- Get a nice finish from your machine even close to boards of arenas with the board scraper attachment
- Thick rubber to not damage boards



## HYDRAULIC RIPPER BAR

- Aggressive ripper
- Depth up to 8" deep
- Hydraulically lift ripper out of the way
- Connects to 3PH of MultiGroomer



## RIPPER TOOTH (MG011)

- Resistant to wear
- Replaceable tooth



## RIPPER SHANK (MG012)

- Resistant to wear
- Shank used along with replaceable tip



## REPLACEABLE SHANK TIP

- Resistant to wear
- Chromium carbon



# MULTI-GROOMER

## CAT I SWIVEL HITCH

- Swivel hitch (CAT I)
- Turns 22 degrees each way
- Unique self-straightening feature when 3PH is raised
- Lock pin for hard and tough footings



## CAT II SWIVEL HITCH

- CAT II Hitch for CAT II tractors



## MULTI GROOMER W/ LIFT AXLE

- Control depth of ripper teeth with axle adjustment
- Optional cylinder and hose kit available



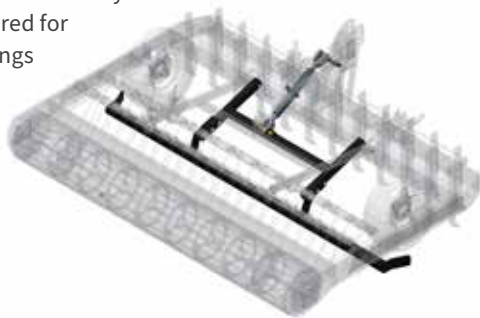
## DRAG PACKER/SEALER

- Pack and seal up synthetic footings
- Hydraulic lift



## GRADING BAR

- Effective on both sand and fiber footings
- Used for sand and is easily raised or lowered for different footings



# MULTI-GROOMER PONY

EQUESTRIAN



## ABOUT THE MULTI-GROOMER PONY

- Heavy duty side rub rails
- Double row of adjustable ripper teeth are offset and have a spacing of 4" as well as a working depth of up to 4"
- The rear two rows of spring tines are offset and the pitch and height can be adjusted with a manual ratchet rack or the optional hydraulic cylinder
- The rear bar roller pulverizes and packs to the desired density

Multi-Groomer PONY	MGP48	MGP60	MGP72	MGP84
Dimensions (WLH)	48 X 51 X 34"	61 X 51 X 34"	73 X 51 X 34"	85 X 51 X 34"
Working Width	48"	60"	72"	84"
Working Depth	4"	4"	4"	4"
Hitch	CAT I	CAT I	CAT I	CAT I
Weight (lbs)	330	385	475	550
Tires	16.5 X 6.5-8	16.5 X 6.5-8	20.5 X 8.0-10	20.5 X 8.0-10
# of Ripper Teeth	11	15	17	19
Rear Bar Roller (Dia.)	8.75"	8.75"	8.75"	8.75"
HP Required	25 MAX	25 MAX	35 MAX	35 MAX
Base Unit	<b>\$4,486</b>	<b>\$4,972</b>	<b>\$5,932</b>	<b>\$6,441</b>

Model Specific Options	Part Number	Price	Part Number	Price	Part Number	Price	Part Number	Price
Leveling Blade (PONY)	MGPLB48	<b>\$478</b>	MGPLB60	<b>\$546</b>	MGPLB72	<b>\$612</b>	MGPLB84	<b>\$678</b>

Universal Options	Part Number	Price
CATI, 3PH, 22° Swivel Hitch	3PHSWL-CATI	<b>\$2,660</b>
MultiGroomer PONY Tow Hitch	MGP TH	<b>\$600</b>
Multigroomer PONY Rear Wheel Kit	MGPW-KIT	<b>\$858</b>
Ripper Tooth	MGP01	<b>\$30</b>
Electric Actuator 100mm Stroke	EAC100AS	<b>\$1,600</b>
Electric Actuator 200mm Stroke	EAC200AS	<b>\$1,850</b>

# MULTI-GROOMER PONY

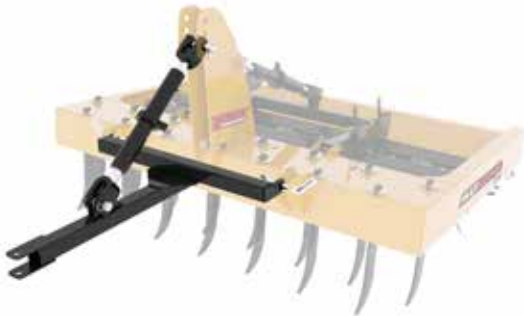
## REAR WHEEL KIT

- Drop and lock wheels down manually to transport



## TOW HITCH

- Add tow hitch to tow behind tractor or appropriate vehicle



## RIPPER TOOTH MGP01

- Replaceable tooth



## LEVELING BLADE

- Levels sand footing



## SWIVEL HITCH CAT I

- Turns 22 degrees each way
- Unique self-straightening feature when 3PH is raised
- Lock pin for hard and tough footings



# WEIGHTS & DIMENSIONS

Landscaper	PART #	Weight	Dimensions
Smooth Roller 48"	505548	180 LBS	48 X 13 X 13
Smooth Roller 60"	505560	215 LBS	60 X 13 X 13
Smooth Roller 72"	505572	245 LBS	72 X 13 X 13
Smooth Roller 84"	505584	270 LBS	84 X 13 X 13
Smooth Roller 96"	505596	315 LBS	96 X 13 X 13
6" (CATI) Hitch Extension set	1000HE	45 LBS	20 X 7 X 6
Ripper Cylinder - 2"x8"	20FEM08-NW	20 LBS	23 X 4 X 4
Brush 48"	BR48	110 LBS	48 X 27 X 16
Brush 60"	BR60	125 LBS	60 X 27 X 16
Brush 72"	BR72	132 LBS	72 X 27 X 16
Brush 84"	BR84	140 LBS	84 X 27 X 16
Brush 96"	BR96	150 LBS	96 X 27 X 16
Harrow Cylinder - 2"x5"	CYL-S	20 LBS	24 X 4 X 4
Push/Pull Hitch	FMH	155 LBS	48 X 26 X 23
Hose Kit with Male Pioneer Ends	H-KIT	5 LBS	-
Hydraulic Top Link (CATII) - 10" Stroke	HTC	20 LBS	23 X 4 X 4
Board Scraper	LBS	23 LBS	26 X 11 X 9
Landscaper Base Unit 48"	P48	350 LBS	49 X 38 X 33
Landscaper Base Unit 60"	P60	570 LBS	61 X 38 X 33
Landscaper Base Unit 72"	P72	701 LBS	73 X 38 X 33
Landscaper Base Unit 84"	P84	745 LBS	85 X 38 X 33
Landscaper Base Unit 96"	P96	833 LBS	97 X 38 X 33
Heavy Landscaper Base Unit 96"	P96H	945 LBS	99 X 46 X 34
Push/Pull Hitch with Hydraulic Angling	PFMH	325 LBS	49 X 26 X 24
Ripper48"	RIP48	125 LBS	46 X 15 X 10
Ripper 60"	RIP60	135 LBS	55 X 15 X 10
Ripper 72"	RIP72	148 LBS	67 X 15 X 10
Ripper 84"	RIP78/84	150 LBS	73 X 15 X 10
Ripper ( fits CATI only ) 96"	RIP96	215 LBS	91 X 15 X 10
Ripper ( fits CATII only ) 96"	RIP96H	215 LBS	92 X 15 X 10
Rear Long Tine Rake Attachment (for D60 only) 60"	RLTR-60	80 LBS	61 X 24 X 17
Rear Long Tine Rake Attachment (for D72 only) 72"	RLTR-72	125 LBS	72 X 29 X 15
Rear Long Tine Rake hydraulic attachment (for 84 only) 84"	RLTR-84	180 LBS	86 X 30 X 22
Skid Steer to CATI Quick Hitch Adapter Plate	CATIAP	126 LBS	46 X 27 X 7
Grass Seeder 48"	GS48	110 LBS	50 X 24 X 22
Grass Seeder 60"	GS60	120 LBS	62 X 24 X 22
Grass Seeder 72"	GS72	130 LBS	74 X 24 X 22
Grass Seeder 84"	GS84	160 LBS	86 X 24 X 22
Grass Seeder 96"	GS96	175 LBS	98 X 24 X 22
Harrow 48"	H48	50 LBS	45 X 17 X 14
Harrow 60"	H60	62 LBS	57 X 17 X 14
Harrow 72"	H72	53 LBS	69 X 17 X 14
Harrow 84"	H84	90 LBS	81 X 17 X 14
Harrow 96"	H96	115 LBS	93 X 17 X 14
Skid Steer to CATI Quick Hitch Adapter Plate	CATIAP	165 LBS	46 X 27 X 7

# WEIGHTS & DIMENSIONS

AeraSeeder	PART #	Weight	Dimensions
Toolbar Mount 3PH 48"	2AOS48TB	230 LBS	71 X 54 X 25
Toolbar Mount 3PH 48"	2AOS72TB	325 LBS	99 X 47 X 25
Toolbar Mount 3PH 72"	3AOS48TB	300 LBS	113 X 46 X 25
Toolbar Mount 3PH 72"	3AOS72TB	450 LBS	168 X 47 X 25
45 lb Suitcase Weight	45LBW	45 LBS	2-2/1 X 9 X 11
Rear Roller Ext. Kit 48"	48RCSREXT	35 LBS	49 X 14 X 8
8" dia x 4" wide (solid delrin) guage wheel set	4X8GW	12 LBS	10 X 8 X 8
Rear Roller Ext. Kit 72"	72RCSREXT	55 LBS	73 X 14 X 8
Rear Roller Ext. Kit 96"	96RCSREXT	70 LBS	97 X 14 X 8
Rear Spiked Roller Kit 24"	AOS-24CC	106 LBS	29 X 14 X 11
Guage Wheel Kit (for AOS24 Self Propelled)	AOS24GW-KIT	15 LBS	28 X 8 X 8
AeraSeeder, 18" wide Self Propelled	AOSCS18SP	310 LBS	27 X 60 X 37
AeraSeeder, 24" wide Self Propelled	AOSCC24SP	455 LBS	33 X 60 X 37
AeraSeeder 48"	AOSCC48	655 LBS	52 X 31 X 37
AeraSeeder 72"	AOSCC72	1350 LBS	81 X 42 X 37
AeraSeeder 96"	AOSCC96	1680 LBS	105 X 42 X 37
AeraSeeder, 24" wide Self Propelled	AOSCS24SP	400 LBS	33 X 60 X 37
AeraSeeder 48"	AOSCS48	530 LBS	52 X 31 X 37
AeraSeeder 72"	AOSCS72	1175 LBS	81 X 42 X 37
AeraSeeder 96"	AOSCS96	1450 LBS	105 X 42 X 37
AeraSeeder 48"	AOSKK48	530 LBS	50 X 31 X 37
AeraSeeder 72"	AOSKK72	1040 LBS	81 X 42 X 37
AeraSeeder 96"	AOSKK96	1300 LBS	105 X 42 X 37
AeraSeeder 48"	AOSKS48	570 LBS	52 X 31 X 37
AeraSeeder 72"	AOSKS72	1075 LBS	81 X 42 X 37
AeraSeeder 96"	AOSKS96	1300 LBS	105 X 42 X 37
Manual Shut-off Kit, 48" model only	MSSSO	10 LBS	-
Tow Dolly 48"	TD48	85 LBS	66 X 57 X 16
Weight Bracket	WB	15 LBS	28 X 6 X 5

In-Fielder	PART #	Weight	Dimensions
Infielder 60"	D60	620 LBS	67 X 43 X 31
Infielder 72"	D72	835 LBS	80 X 48 X 32
Infielder 84"	D84	935 LBS	97 X 46 X 33
50gal. Water Tank, Pump, Switch & Nozzle	WT50G	25 LBS	38 X 24 X 20
Rotary Sweeper Brush, 20" dia, hyd driven	RSB20	140 LBS	45 X 28 X 22
Hand Wand Kit	HWK	3 LBS	-
Tow Kit with Wheels, manual lift with ratchet jacks	ITA	135 LBS	43 X 36 X 16

# WEIGHTS & DIMENSIONS

Drag Mat	PART #	Weight	Dimensions
Drag Mat 66"	DM66	105 LBS	73 X 20 X 10
Drag Mat 84"	DM84	118 LBS	91 X 20 X 10
Hitch Extension and Adapter	DMHEX	10 LBS	13 X 3 X 8

RotoRake	PART #	Weight	Dimensions
CAT1 3PH Plate	CAT13PHRR	75 LBS	36 X 6 X 20
RotoRake 48"	RR48	725 LBS	57 X 55 X 28
RotoRake 60"	RR60	1150 LBS	69 X 69 X 34
PTO RotoRake 60"	RR60PTO18G	1370 LBS	69 X 66 X 36
RotoRake 72"	RR72	1220 LBS	81 X 63 X 34
PTO RotoRake 72"	RR72PTO18G	1440 LBS	81 X 66 X 36
RotoRake 84"	RR84	1280 LBS	96 X 63 X 34
PTO RotoRake 84"	RR84PTO18G	1500 LBS	96 X 66 X 36
Angle Cylinder & Hose Kit, ea. (used on tractor remotes)	RRAK	25 LBS	23 X 4 X 4
12V electric valve, harness & hydraulic cylinder, ( angle)	RRAKHA	50 LBS	23 X 8 X 8
Rotorake Side Cutters / set	RRSCK	28 LBS	8 X 6 X 12" (SET)
Tilt Cylinder & Hose Kit, ea. (used on tractor remotes)	RRTK	20 LBS	21 X 5 X 4
12V electric valve, harness & hydraulic cylinders, (Angle and Tilt)	RRTKHA	80 LBS	23 X 16 X 8

Lawn Roller	PART #	Weight lbs	Dimensions
Lawn Roller (walk-behind)	LR30	530 LBS	36 X 62 X 46
Ride On Attachment	ROA	180 LBS	36 X 36 X 30

Multi-Packer	PART #	Weight	Dimensions
Replaceable Tip - Chromium Carbon	GEN43	1.3 LBS	3 X 5 X 2
Ripper Teeth	MG012	5 LBS	4 X 19 X 1/2
Multi-Packer (24" Dia. Roller) 36"	MP36	565 LBS	40 X 37 X 30
Multi-Packer (24" Dia. Roller) 48"	MP48	610 LBS	52 X 37 X 30
Multi-Packer (24" Dia. Roller) 60"	MP60	712 LBS	64 X 37 X 30
Multi-Packer (24" Dia. Roller) 72"	MP72	815 LBS	76 X 37 X 30
Multi-Packer (24" Dia. Roller) 84"	MP84	940 LBS	88 X 37 X 30
Multi-Packer (24" Dia. Roller) 96"	MP96	1025 LBS	100 X 37 X 30
Leveling Blade 36"	MPLB36	35 LBS	32 X 14 X 4
Leveling Blade 48"	MPLB48	40 LBS	44 X 14 X 4
Leveling Blade 60"	MPLB60	50 LBS	56 X 14 X 4
Leveling Blade 72"	MPLB72	60 LBS	68 X 14 X 4
Leveling Blade 84"	MPLB84	66 LBS	80 X 14 X 4
Leveling Blade 96"	MPLB96	75 LBS	92 X 14 X 4
Tow Hitch / Draw Bar	MPTH	55 LBS	29 X 45 X 8

# WEIGHTS & DIMENSIONS

Trail Pro	PART #	Weight	Dimensions
TRAILPRO 50"	TP50	1250 LBS	55 X 66 X 34
Rear Roller Attachment 50"	TP50RR	175 LBS	54 X 14 X 8
TRAILPRO 60"	TP60	1420 LBS	67 X 66 X 34
Rear Roller Attachment 60"	TP60RR	185 LBS	66 X 14 X 8
TRAILPRO 72"	TP72	1575 LBS	79 X 66 X 34
Rear Roller Attachment 72"	TP72RR	196 LBS	78 X 14 X 8
TRAILPRO 96"	TP96	2100 LBS	103 X 66 X 33
Rear Roller Attachment 96"	TP96RR	218 LBS	102 X 14 X 8

Stump Grinders - Direct Drive	PART #	Weight	Dimensions
Stump Grinder 25" Direct	R25PD	460 LBS	38 X 29 X 34
Stump Grinder 25" Swing (one remote)	R25PSV	950 LBS	42 X 72 X 56
Stump Grinder 25" Swing (two remotes)	R25PSS	950 LBS	42 X 72 X 56

Stump Grinders - Hydraulic Drive	PART #	Weight	Dimensions
Stump Grinder 18" Hydraulic Direct (Mini Bobcat)	R18HDMB1015G	240 LBS	37 X 30 X 25
Stump Grinder 18" Hydraulic Direct (Mini Skid Steer)	R18HDMS1015G	240 LBS	28 X 30 X 25
Stump Grinder 18" Hydraulic Direct (Universal Skid Steer)	R18HDSK1520G	240 LBS	47 X 30 X 25
Stump Grinder 25" Hydraulic Direct (50cc Gear Motor)	R25HDSK1620G	480 LBS	47 X 41 X 32
Stump Grinder 25" Hydraulic Direct (63cc Gear Motor)	R25HDSK2026G	480 LBS	47 X 41 X 32
Stump Grinder 25" Hydraulic Direct (90cc Bent Axis Piston Motor)	R25HDSK2738P	500 LBS	47 X 41 X 32
Stump Grinder 25" Hydraulic Swing (50cc Gear Motor)	R25HSSK1620G	670 LBS	47 X 69 X 24
Stump Grinder 25" Hydraulic Swing (63cc Gear Motor)	R25HSSK2026G	670 LBS	47 X 69 X 24
Stump Grinder 25" Hydraulic Swing (90cc Bent Axis Piston Motor)	R25HSSK2738P	670 LBS	47 X 69 X 24

Tree Puller	PART #	Weight	Dimensions
Tree Puller 28"	TRP2814	350 LBS	51 X 35 X 21
Guard (Push Bar)	TRPGF	75 LBS	54 X 30 X 6
Guard Insert (requires push bar)	TRPGR	26 LBS	48 X 21 X 2

# WEIGHTS & DIMENSIONS

Multi-Groomer	PART #	Weight	Dimensions
MultiGroomer 120"	MG120	1500 LBS	121 X 68 X 32
MultiGroomer with Hydraulic Lift Axle 120"	MG120-LA	1575 LBS	121 X 68 X 32
MultiGroomer 48"	MG48	595 LBS	49 X 68 X 32
MultiGroomer with Hydraulic Lift Axle 48"	MG48-LA	631 LBS	49 X 68 X 32
MultiGroomer 60"	MG60	690 LBS	61 X 68 X 32
MultiGroomer with Hydraulic Lift Axle 60"	MG60-LA	740 LBS	61 X 68 X 32
MultiGroomer Smooth Roller (Water tank) 48"	MG7148	180 LBS	48 X 13 X 13
MultiGroomer Smooth Roller (Water tank) 60"	MG7160	215 LBS	60 X 13 X 13
MultiGroomer Smooth Roller (Water tank) 72"	MG7172	246 LBS	72 X 13 X 13
MultiGroomer Smooth Roller (Water tank) 80"	MG7180	268 LBS	80 X 13 X 13
MultiGroomer Smooth Roller (Water tank) 96"	MG7196	315 LBS	96 X 13 X 13
MultiGroomer 72"	MG72	900 LBS	73 X 68 X 32
MultiGroomer with Hydraulic Lift Axle 72"	MG72-LA	945 LBS	73 X 68 X 32
MultiGroomer 80"	MG80	975 LBS	81 X 68 X 32
MultiGroomer with Hydraulic Lift Axle 80"	MG80-LA	1000 LBS	81 X 68 X 32
MultiGroomer 96"	MG96	1100 LBS	97 X 68 X 32
MultiGroomer with Hydraulic Lift Axle 96"	MG96-LA	1160 LBS	97 X 68 X 32
Board Scraper	MGBS	22 LBS	20 X 9 X 14
Drag Packer/Sealer Attachment 120"	MGDPS120	440 LBS	120 X 72 X 23
Drag Packer/Sealer Attachment 60"	MGDPS60	330 LBS	60 X 72 X 23
Drag Packer/Sealer Attachment 72"	MGDPS72	350 LBS	72 X 72 X 23
Drag Packer/Sealer Attachment 80"	MGDPS80	370 LBS	80 X 72 X 23
Drag Packer/Sealer Attachment 96"	MGDPS96	410 LBS	96 X 72 X 23
Leveling Blade 120"	MGLB120	115 LBS	112 X 12 X 4
Leveling Blade 48"	MGLB48	46 LBS	42 X 12 X 4
Leveling Blade 60"	MGLB60	60 LBS	54 X 12 X 4
Leveling Blade 72"	MGLB72	72 LBS	68 X 12 X 4
Leveling Blade 80"	MGLB80	80 LBS	74 X 12 X 4
Leveling Blade 96"	MGLB96	100 LBS	84 X 12 X 4
wide Ripper Attachment (CAT II Hitch) 96"	MGRIP96	680 LBS	88 X 52 X 15
MultiGroomer Tow Hitch (Heavy Duty, Adjustable)	MGTH	45 LBS	29 X 28 X 7

# WEIGHTS & DIMENSIONS

Roto Groomer	PART #	Weight	Dimensions
RotoGroomer CATI (540 rpm PTO Drive) 72"	PTORG72	925 LBS	46 X 82 X 35"
Ripper Bar Attachment 72"	PTORG72-RIP	175 LBS	20 X 72 X 20"
RotoGroomer CATII (540 rpm PTO Drive) 96"	PTORG96	1150 LBS	46 X 105 X 35"
Ripper Bar Attachment 96"	PTORG96-RIP	220 LBS	20 X 93 X 20"
RotoGroomer Board Scraper	RGBS	23 LBS	11 X 24 X 9"
Floating Spill Shield Kit	RGFSS	15 LBS	18 X 6 X 3" (SET)

Multi-Groomer Pony	PART #	Weight	Dimensions
MultiGroomer PONY 48"	MGP48	275 LBS	49 X 52 X 34
MultiGroomer PONY 60"	MGP60	325 LBS	61 X 52 X 34
MultiGroomer PONY 72"	MGP72	445 LBS	73 X 52 X 34
MultiGroomer PONY 84"	MGP84	500 LBS	84 X 52 X 34
Leveling Blade (PONY) 48"	MGPLB48	28 LBS	42 X 12 X 4
Leveling Blade (PONY) 60"	MGPLB60	36 LBS	54 X 12 X 4
Leveling Blade (PONY) 72"	MGPLB72	44 LBS	68 X 12 X 4
Leveling Blade (PONY) 84"	MGPLB84	53 LBS	80 X 12 X 4
MultiGroomer PONY Tow Hitch	MGPTH	20 LBS	28 X 30 X 5
MultiGroomer PONY Rear Wheel Kit	MGPW-KIT	30 LBS	11 X 11 X 19" (TOGETHER)

Universal	PART #	Weight	Dimensions
CATI, 3PH, 22 degree swivel hitch	3PHSWL-CATI	165 LBS	36 X 14 X 31
CATII, 3PH, 22 degree swivel hitch	3PHSWL-CATII	215 LBS	39 X 15 X 31
Hydraulic Top Link (CATII) - 14" Stroke	HTC14	25 LBS	27 X 4 X 4

# WEIGHTS & DIMENSIONS

Auger Drives	PART #	Weight	Dimensions
Auger Drive (no frame)	AS-0615	150 LBS	10 X 10 X 28
Auger Drive (no frame)	AS-1020	150 LBS	10 X 10 X 28
Auger Drive (no frame)	AS-1530	150 LBS	10 X 10 X 28
Auger Drive (no frame)	AS-2035	151 LBS	10 X 10 X 28
Auger Drive (no frame)	AH-1530	185 LBS	10 X 10 X 35

Dirt Augers	PART #	Weight	Dimensions
6" Dirt Auger with 2" Hex	DA06200H	55 LBS	6 X 6 X 48"
9" Dirt Auger with 2" Hex	DA09200H	65 LBS	9 X 9 X 48"
12" Dirt Auger with 2" Hex	DA12200H	75 LBS	12 X 12 X 48"
15" Dirt Auger with 2" Hex	DA15200H	90 LBS	15 X 15 X 48"
18" Dirt Auger with 2" Hex	DA18200H	110 LBS	18 X 18 X 48"
24" Dirt Auger with 2" Hex	DA24200H	125 LBS	24 X 24 X 48"
30" Dirt Auger with 2" Hex	DA30200H	156 LBS	30 X 30 X 48"
36" Dirt Auger with 2" Hex	DA36200H	187 LBS	36 X 36 X 54"

Rock Augers	PART #	Weight	Dimensions
6" Rock Auger with 2" Hex	RA06200H	75 LBS	6 X 6 X 48"
9" Rock Auger with 2" Hex	RA09200H	80 LBS	9 X 9 X 48"
12" Rock Auger with 2" Hex	RA12200H	100 LBS	12 X 12 X 48"
15" Rock Auger with 2" Hex	RA15200H	125 LBS	15 X 15 X 48"
18" Rock Auger with 2" Hex	RA18200H	150 LBS	18 X 18 X 48"
24" Rock Auger with 2" Hex	RA24200H	200 LBS	24 X 24 X 48"

Tree Augers	PART #	Weight	Dimensions
18" Tree Auger with 2" Hex	TA18200H	110 LBS	18 X 18 X 54"
24" Tree Auger with 2" Hex	TA24200H	165 LBS	24 X 24 X 54"
30" Tree Auger with 2" Hex	TA30200H	225 LBS	30 X 30 X 54"
36" Tree Auger with 2" Hex	TA36200H	290 LBS	36 X 36 X 54"

# WEIGHTS & DIMENSIONS

Auger Drive Accessories	PART #	Weight	Dimensions
Hex 2" x 2 Foot extension (fixed)	EHF2-24	35 LBS	5 X 5 X 30"
Hex 2" x 3 Foot extension (fixed)	EHF2-36	47 LBS	5 X 5 X 42"
Hex 2" x 4 Foot extension (fixed)	EHF2-48	60 LBS	5 X 5 X 54"
Hex 2" x 2 Foot extension (adjustable*)	EH2-24	35 LBS	5 X 5 X 30"
Hex 2" x 3 Foot extension (adjustable*)	EH2-36	47 LBS	5 X 5 X 42"
Hex 2" x 4 Foot extension (adjustable*)	EH2-48	60 LBS	5 X 5 X 54"
Hex 2" x 5 Foot extension (adjustable*)	EH2-60	75 LBS	5 X 5 X 66"
Hex 2" x 6 Foot extension (adjustable*)	EH2-72	85 LBS	5 X 5 X 78"
Adapter 2" Hex - 2" Round	HR200-20	20 LBS	5 X 5 X 14"
Adapter 2" Hex - 2" Square	HS200-20	20 LBS	5 X 5 X 15"
Adapter 2.5" Hex - 2" Hex	HH25-20	25 LBS	6 X 6 X 17"
Adapter 2" Round - 2.5" Round	RR200-25	25 LBS	-
Adapter 2" Round - 2" Hex	RH200-20	20 LBS	4 X 4 X 16"
Adapter 2" Hex - 2.5" Round	HR200-25	25 LBS	5 X 5 X 14"
Adapter 2.5" Hex - 2" Hex	HH25-20WC	25 LBS	6 X 6 X 17"
Adapter 2 9/16" - 2" Round	RR2916-20	25 LBS	5 X 5 X 11"
Adapter 2 9/16" - 2" Hex	RH2916-20	25 LBS	6 X 6 X 14"
Adapter 2 5/8" Hex - 2" Hex	HH258-20WC	45LBS	6 X 6 X 21"
Skid Steer Quick Attach Frame with Swivel	USH100	125 LBS	46 X 15 X 23"
Mini Skid Steer Hitch with Swivel	USH100M	60 LBS	24 X 15 X 14"
Mini Bobcat Skid Steer Hitch with Swivel	USH100MB	100 LBS	36 X 15 X 23"
Blank Frame with Swivel	USH100BL	110 LBS	46 X 12 X 23"
Universal Weld-On Mount	UWH100	75 LBS	11 X 12 X 16"
Swivel Casting	123912	12 LBS	7 X 7 X 4-1/2"
Two 1/2" hoses 96" long , flat face couplers	H-KIT-96F	-	-
Two 1/2" hoses 96" long , 10MB	H-KIT-96	-	-
Dirt Pilot SB35	123909	3.2 LBS	6.5 X 3.5 X 2"
Dirt Tooth 35G	123910	.4 LBS	3.5 X 2 X .38"
Dirt Tooth 35	123911	.4 LBS	3.5 X 1.8 X .38"
Carbide - Dirt Pilot	123907	4 LBS	7 X 4 X 2"
Carbide - Dirt Tooth	123908	.6 LBS	3.6 X 1.5 X .63
Carbide - Rock Pilot	124453	-	-
Carbide - Bullet Tooth	115185	-	-

# HYDRAULIC HORSEPOWER FORMULA

## CALCULATE HYDRAULIC HORSEPOWER FROM HYDRAULIC OIL FLOW AND PRESSURE

$\text{psi} \times \text{gpm} \div 1714 \times \text{percentage efficiency (.80 to .95 is common)} = \text{HP}$

### Example:

$2500\text{psi} \times 20\text{gpm} \div 1714 \times .85 = 24.8 \text{ HP}$

## FREIGHT RATES

*PLEASE CALL FOR FREIGHT RATE*

## RETURNS

*RETURNS MUST BE PRE-APPROVED BEFORE RETURN.  
PLEASE CALL 519-669-1501*

*ALL APPROVED RETURNS MUST BE SENT PREPAID TO:  
REIST INDUSTRIES INC.  
100 UNION ST ELMIRA ONTARIO N3B 3L7*

*RETURNS ARE CREDITED TO YOUR ACCOUNT UNLESS OTHERWISE APPROVED.*

*PLEASE NOTE THAT RESTOCKING CHARGES WILL APPLY.*









100 Union Street  
Elmira, Ontario, Canada  
N3B 3L7

Phone: 519-669-1501  
Fax: 519-669-3021  
Toll Free: 1-877-467-3478  
[www.reistindustries.com](http://www.reistindustries.com)

MANUFACTURED IN CANADA

25195-OT01 | Printed in Canada  
E.&O.E. | December 2025