



**T3**  
D  
R  
I  
V  
E  
R  
®

"Good enough won't do - it must be right." - K.B. Danuser, Founder 1910

# T<sub>3</sub> DRIVER<sup>®</sup>

## THE T3 POST DRIVER IS A SMALL DRIVER THAT DELIVERS BIG TIME RESULTS!

The T3 Driver will drive T-posts up to a 3" O.D. pipe at a rate of up to six strikes per second. The top of the post is fully contained to prevent kick out and protected from damage by the strike plate. Use your tractor, CTL/skid-steer, mini-track/skid loader, mini-ex, loader, or backhoe to carry the weight of the driver. This is an ideal post driver for most farmers, ranchers, fencing contractors, and rental yards.



## EFFORTLESS POST DRIVING



## ACCESSORIES



### Extra Mount Bracket

PN 21302

Bolt-on/weld-on bracket that mounts to a flat surface



### Tilt Bracket Assembly

PN 21301

Tilt left or right up to 20°



### Front-End Loader Hose Kit

PN 196056

### Plumb Bob

PN 21356



Provides vertical line reference for operator

## FEATURES

- 6 strikes per second up to 30 GPM
- Drives T-posts, tent stakes, signposts, and up to 3" O.D. pipe
- Versatile mounting options are available for quick attach systems, as well as a bolt-on/weld-on bracket that mounts to a flat surface. (All mounts are interchangeable with the T3 and tilt bracket.)

## MOUNTING OPTIONS



### Bobcat MT Quick Attach Mount

PN 240607



### Mini-skid Quick Attach Mount

PN 220240



### Backhoe & Excavator Quick Attach Mounts

See [www.danuser.com](http://www.danuser.com) for more information.



### Skid-Steer Quick Attach Mount

PN 21305

Equipped with offset mounting for front-end loaders



(Shown Arm Retracted)

### Skid-Steer Offset Quick Attach Mount

PN 21355

Telescopes left or right 5' from center in 6" increments. Allows operator to drive parallel with fence



(Shown Arm Extended)



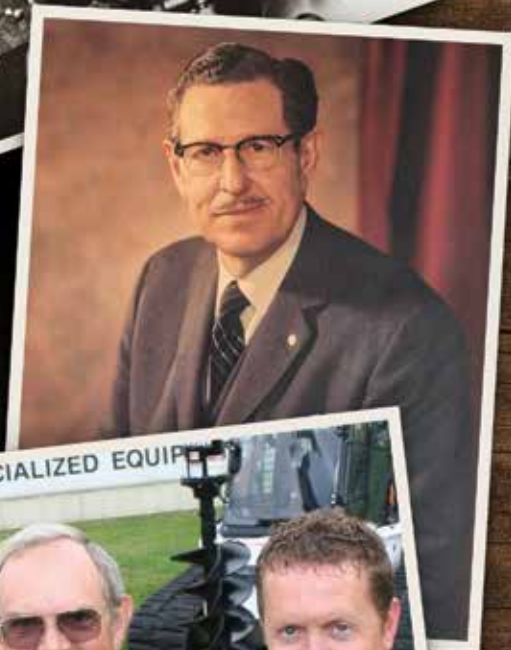
### John Deere 200/300/400/500 Series Quick Attach Mount

PN 21304



### Euro/Global Quick Attach Mount

PN 21303



## A HISTORY OF INNOVATION

Established in 1910, Danuser is a 4th generation family owned and operated company. With decades of design and manufacturing experience, we build our products with reliability that will last for generations. From our renowned auger system released in the mid-1940s to the more current designs, our commitment to our customers remains the same - to design and build products that are the benchmark of quality, reliability, and longevity.

In the words of our founder K.B. Danuser, "Good enough won't do - it must be right."

Danuser manufactures industrial and agricultural attachments for various applications, serving many industries worldwide. Please visit [www.danuser.com](http://www.danuser.com) to see our full line of attachments.

 **DANUSER**<sup>®</sup>

500 E 3<sup>rd</sup> St. • P.O. Box 368  
Fulton, MO 65251

(573) 642-2246 • [sales@danuser.com](mailto:sales@danuser.com)

[www.danuser.com](http://www.danuser.com)

