



BOX TYPE BALE SHREDDERS

T8200 TOMAHAWK BALE PROCESSOR

ITEM NUMBER	DESCRIPTION	WEIGHT	PRICE
T8200M	Tomahawk 3PH Bale Processor - Swivel Chute, Fixed Bale Restraint	4458	\$52,377.00
T8200SM	Tomahawk Mounted Bale Processor - Swivel Chute, Bluetooth Electric Controls	4458	\$54,855.00
T8200ST	Tomahawk Trailed Bale Processor - Swivel Chute, Bluetooth Electric Controls	4879	\$58,628.00

8200 Tomahawk Bale Processor

The 8200 series includes two models:

- **8200** – feeding silage and bedding straw.
- **8250** – dual chop for precision short chop straw processing and bedding straw.

Both models available as trailed or mounted machines.

STANDARD EQUIPMENT

- Electronic in-cab controls
- Swivel chute with 280° Rotation
- Single crossbeater
- Adjustable feed slide
- Remote tailgate switch
- Slip and overrun clutch on PTO
- Bed speed indicator
- 10.5/15 wheels w/mud guards (*trailed models*)
- LED road lighting kit (*trailed models*)

OPTIONAL EQUIPMENT

- Hydro shield – dust suppression
- Hydraulic filter
- Automatic chain lubrication system
- Extra blade kit
- Ski-jump chute
- Swivel Chute Extension
- Clevis Drawbar & Jack (*trailed models*)
- Wide angle PTO (*trailed models*)
- LED road lighting kit (*mounted models*)



SYNCHRO
START - STOP - RUN

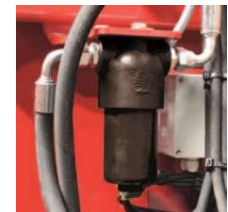
- Pause/Run modes
- Adjustable bale restraint
- Loading setting (Pause)
- WiFi control



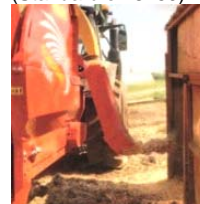
Automatic Chain Oiler
(Standard on 8250)



Road Lighting Kit



In-Line High Pressure Filter



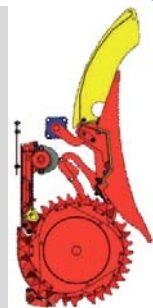
Ski Jump Chute



Swivel Chute Insert



Hydro shield – dust suppression system



DUAL CHOP CROSSBEATER

(8250 dual chop models only) Designed for processing short material with a 40% increase in cutting speed.

The 'Dual Chop' system incorporates a set of retractable blades that can be repositioned at the touch of a button, changing straw output from short chop (around 2") to no chop, and back again in a matter of seconds.

	8200M	8200T	8250M	8250T
Capacity (ft ³)	113	113	113	113
# of 6' round bales	2	2	2	2
# of 8' rectangle bales	1	1	1	1
Blow Distance (max)	65'	65'	65'	65'
HP (Min)	140HP	60HP	150HP	80HP
Oil Flow Rate (min/max)	9-16gpm	9-16gpm	9-16gpm	9-16gpm



T8500 CHIEF TRAILED W/LH SWIVEL CHUTE/RH SLIDE CHUTE

Flow Plus System:

- **Consistent and even feed rate, even with the most difficult materials**
 - **Controlled delivery of material at low fan speeds**



A flared tailgate for easy loading. Two hydraulic cylinders lift the heaviest bales.



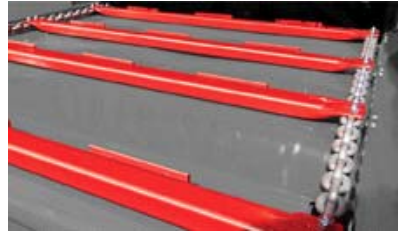
The bale restraint design works with grippers on the slats for good tumbling action, ensuring a consistently high discharge rate.



Large diameter 8 paddle fan for powerful air flow.



In-line high pressure filter.



Heavy duty bed chain with slats attached by "U" bolts for easy maintenance. Grippers welded onto slats ensure good bale feed.



Paddles can be unbolted and repaired if necessary without removing the fan or splitting the machine.



Indicator provides visual indication of bed speed.



Chain drive to crossbeater for transmission of maximum power.



Intuitive electric controls with high flow hydraulic valve for trouble free fingertip control



280° swivel chute rotation



Adjustable feed slide folds down for access to confined areas or lifts up for delivering feed outside the width of the tractor.



BOX TYPE BALE SHREDDERS

T8500 CHIEF TRAILED W/LH SWIVEL CHUTE/RH SLIDE CHUTE

ITEM NUMBER	DESCRIPTION	WEIGHT	PRICE
T8500CHIEF	Tomahawk Bale Processor Swivel Chute / Electric Controls / Trailed Machine	4586	\$57,559.00
T8555CHIEF	Tomahawk Bale Processor - Trailed Machine W/Left Hand Hydraulic Swivel Chute w/Hydraulic Up & Down and Right Hand Slide Chute. Electric Controls. Bale Chamber is 6" wider than T8100SC	4600	\$70,973.00

SCREENS AVAILABLE FOR T8555 CHIEF

ITEM NUMBER	DESCRIPTION	PRICE
SC5314	Screen - Blanking Plate/No Screen - Included with T8555	\$725.00
SC5310	Screen - 1.97" (50MM) Hole Size - Standard With T8555	\$1,029.00

THE T8500 CHIEF is a "wide body" model that provides the same features, benefits and options of 808/7100/8100 models but can handle up to two 5' x 5' round bales and all full size square bales. T8500 has a standard shredding rotor and electric controls.

THE T8555 Dual Chop CHIEF has the same features as the T8500 with the added capability to chop both wet & dry material.

SPECIFICATIONS	T8500 Series Chief
Chute Type	Swivel
Silage & Straw	Yes
Corn Stalks (Wear resistant steel used in fan housing)	Yes
Number of Crossbeaters	1
Cubic Capacity-Bushels	125
Overall Width (chute closed)	7' 1"
Overall Height (chute closed)	9'1"
Overall Length (tailgate raised)	13' 7"
Overall Length (tailgate lowered)	17'8"
Giraffe Discharge Height - Max. RH side	10' 7"
Giraffe Discharge Height - Max. LH side	11' 2"
Working Width Giraffe	7' 7"
Bale Chamber (W x H x L)	5' 7" x 4' 1" x 9' 9"
Max Rectangular Bale Size	4'x4'x8'
Max Round Bale Size	5'x6'
Max Discharge Distance	up to 72'
Chute Rotation	280 Degrees
Tire Size (Standard)	10.0/75-15.3
Wheel Track (Standard Tires)	6' 3"
Fenders & Road Lights	Yes
Extension Sides (Greedy Boards)	Yes
Weight	4586 lb.
Controls	Electric
Minimum Tractor Size	80HP
Oil Flow Rate Min/Max GPM	9.3-15.9



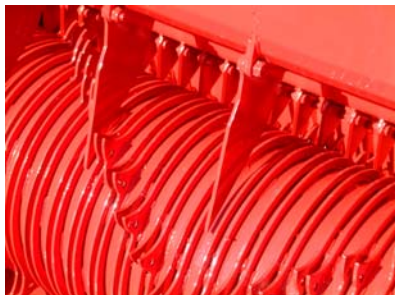
T8500 Chief



Greedy Boards



Electric Controls-Standard on all Box Type models



Dual Chop mechanism



8555 CHIEF features 20% larger removable screen. The removable screens allow the 8555 to chop both wet and dry material.



BOX TYPE BALE SHREDDERS

9500SC BOX TYPE BALE SHREDDER WITH SWIVEL CHUTE

ITEM NUMBER	DESCRIPTION	WEIGHT	PRICE
T9500SC	Trailed Machine with W/Swivel Chute and adjustable feed slide fitted for accurate placement / Wireless Controls	6651	\$77,973.00

The T9500 features a wide body / twin crossbeater configuration ensures easy loading and offers 282 cubic feet capacity. Incorporating the 'FlowPlus' design, the T9500 gets greater output, a more consistent feed rate and controlled delivery at low fan speeds.

Specifications	T9500SC
Chute Type	Swivel
Baled Silage	No
Clamp Silage	Yes
Straw	Yes
Number of Crossbeaters	2
Capacity-Bushels	230
Overall Width (chute closed)	7' 3"
Overall Height (chute closed)	9' 6"
Overall Length (tailgate raised)	17'
Overall Length (tailgate lowered)	20' 9"
Bale Chamber (W x H x L)	5' 6" x 5' 1" x 13'
Max Rectangular Bale Size	4'x4'x8'
Max Round Bale Size	5'x6'
Max Discharge Distance	up to 72'
Chute Rotation	280 Degrees
Tire Size (Standard)	305/55R 22
Weight	6651 lbs.
Controls	Wireless
Minimum Tractor Size	80HP



T9500SC



Wireless Bluetooth Controls



BOX TYPE BALE SHREDDERS

ITEM NUMBER	DESCRIPTION	WEIGHT	PRICE
T1010SC	Bale Shredder W/LH Swivel Chute And RH Slide Chute. Double Beater. Includes Hydraulic Brakes(Tractor Remote Brake Outlet Required),Light Kit, And Mud Flaps. Electric Controls.	7915	\$85,045.00

Holds three 6 ft. round straw bales, two 8 ft. long rectangular bales end to end, or four, if double stacked.

Specifications	T1010 SC
Chute Type	Swivel
Silage	Yes**
Straw	Yes
Corn Stalks	Yes
Crossbeaters	2
Cubic Capacity-Bushels	285
Overall Width (All chutes closed)	7' 11"
Overall Length (Tailgate raised)	20' 3"
Overall Height (Deflector Lowered)	9' 7"
Bale Chamber (W x H x L)	5' 7" x 5' 2" x11' 4"
Chamber Length With Tailgate Down	18' 8"
Max Rectangular Bale Size	4'3" x 4' x 8'
Max Round Bale Diameter	6' 7"
Max Discharge Distance	Up to 72'
Chute Rotation	280 Degrees
Tire Size	385/55 R22.5
Wheel Track	6' 7"
Weight lb.	7,900
Min Tractor Size HP	90
Oil Flow Rate Min/Max GPM	9.3-15.9
Electric Controls & Remote Tailgate Switch	Standard
In-Line High Pressure Filter	Standard
Lights, Mudguards & Brakes	Standard
Bale Support	Standard
Hardox Tips on Knives	Standard
Extra Knives on Beaters	Standard
Wide Angle PTO Shaft	Optional



T1010 dual cross beaters

**Not suitable for silage bales unless bales we're made by a baler with a cutting system.



BOX TYPE BALE SHREDDERS

BOX TYPE BALE PROCESSOR OPTIONS

ITEM NUMBER	DESCRIPTION	PRICE
CVPTO1LO	Wide Angle PTO (CV PTO) In Lieu Of Standard (No Exchange For Used PTO's)	\$1,203.00
SC3768	Extra Blade Kit - 7100/8500CHIEF- Adds 48 Blades To The Crossbeater For Shorter Chop Length	\$464.00
SC4218	Hook Ripper Kit - 7100/8500CHIEF-Increases Feed Rate-Less Chopping	
SC4702	Hardox Tips 8500CHIEF/1010 Crossbeater-Recommended When Processing Corn Stalks	\$406.00
SC4710	Tail Gate Extension-Adds 24" T8500CHIEF/8550	\$1,174.00
SC4921	12" Swivel Chute Extension 1010SC-Allows Chute To Rotate Above Rotor Hood For Wider Coverage To The Rear And Right Rear.Adds 12" Of Height.	
DUSTKIT	Dust Suppression Kit - For All Box Machines, 13 Gallon Tank, 5 Nozzles	\$3,319.00

Options



Road light kit-factory option
(Front lights not shown)



Remote control tailgate & bed chain
switch. Makes loading easier



Hardox wear tips (T8500/1010)



Tailgate extension



12" extension for T1010 chute to
discharge to the rear of the machine



BOX TYPE BALE SHREDDERS

HYDRAULIC BALE PROCESSOR

ITEM NUMBER	DESCRIPTION	WEIGHT	PRICE
T6100H	Hydraulic Compact Bale Processor - SSL Brackets, Side Extensions, Bale Clamp	1713	\$41,508.00

Tomahawk 6100H

The Tomahawk 6100H has been designed for compact handlers, skid steers and tractor loaders for ease of use in tight yards and barns.

Compatible with most brands and operates with a minimum hydraulic flow of just 40 L/min (1.4t lift capacity).

- Swivel chute with 280 degree rotation
- Load sensing crossbeater that automatically reverses the crossbeater and bed chain improving flow
- Pressure gauge assists the operator in setting the pressure switch to operate in the 'green' zone.
- Easy to use in-cab Wi-Fi controls allowing operator to pause/resume, and control the chute/loading gate



	6100H
Number of Crossbeaters	1
Capacity	1.7m
No. of 5' round bales	1
No. of 8' rect bales (4'x2'6"/4'x4')	.5
Bale Chamber (tailgate down) WxHxD	50"x31.5"x48"
Blow Distance	40'
PTO Power Required	70HP
Length Overall	106"
Height Overall w/machine on ground	81"
Width with chute closed	68"
Weight	1713 lbs.
Oil Flow Rate (min-max)	10.5-19.8 gpm

STANDARD:



Bale Clamp



Side Extensions



Skid Steer Bracket

OPTION:

Attachment Bracket: Brackets are available for most skid steer, telehandler models.



BOX TYPE BALE SHREDDERS

TELEHANDLER MOUNTED BALE SHREDDER

ITEM NUMBER	DESCRIPTION	WEIGHT	PRICE
T6200H	Bale Shredder - Telehandler Mount	3200	\$50,610.00
SC6001	Bracket-JCB Q Fit		\$1,261.00
SC6005	Bracket-MERLO P26/27/30		\$1,261.00
SC6010	Bracket-JCB Pin & Cone		\$1,261.00
SC6015	Bracket-Manitou		\$1,261.00
SC6020	Bracket-New Holland		\$1,261.00
SC6030	Bracket-Caterpillar		\$1,261.00

Tomahawk 6200H

The Tomahawk 6200H has been designed for telehandlers and tractor loaders. Hydraulic drive for faster, more convenient hitching. No PTO required. Self-loading round or rectangular bales.

Compatible with most brands and operates with a minimum hydraulic flow of just 40 L/min (1.4t lift capacity).

- Service intervals a Cush Drive protects the crossbeater and hydraulic motor from damage
- Pressure gauge assists the operator in setting the pressure switch to operate in the 'green' zone.
- Easy to use in-cab Wi-Fi controls allowing operator to pause/resume, and control the chute/loading gate



	6200H
Capacity (Cubic feet)	105
No. of 8' rectangular bales (4'x3'4"x4')	.5
Bale Chamber (tailgate down) WxHxD	56"x48"x114"
Blow Distance	45'
Length	106" (tailgate up) 157" (tailgate down)
Height Overall w/machine on ground	99"
Width with chute closed	66"
Weight	3328 lbs.
Oil Flow Rate (min-max)	15-31 gpm
Maximum Handler Oil Pressure	3915psi @ 176 °F

OPTIONS:



Blade or Hooks



Hitching Brackets



Hydraulic Flow Divider



Hydraulic Loading Gate



DRUM TYPE BALE SHREDDERS

3PT MOUNTED BALE SHREDDERS FOR SILAGE OR DRY BALES

TEAGLE TOMAHAWK BALE SHREDDERS

GENERAL INFORMATION

- BALE DIAMETER:** Although machines perform best when the bale diameter is matched to the drum size recommended, larger diameter drums also work with smaller diameter bales. Delivery rate is not as smooth due to the tendency of smaller bales to tumble when they break up, but it is not a serious problem. Many T5050's are in use for both 4' and 5' diameter bales.
- HORSEPOWER REQUIREMENTS:** Directly related to desired output speed and tractor weight limitation on the 3 PT Hitch. In general, 60HP minimum is recommended for the 4' and 5' models. 70HP for the 6' machines. Maximum output is attained with 75-100HP depending on material being chopped.
- HYDRAULIC REQUIREMENTS:** One set of remotes is required to operate hydraulic motor for drum rotation. 6-10 GPM is sufficient for average rotation speed. A second set of remotes is needed if an optional hydraulic top link cylinder is used. Hydraulic chute options also require a cylinder.
- DISCHARGE DISTANCE:** 15' - 30' @ 540 PTO. Up to 50' @ 1000PTO
- PAPER:** Silage rotor machines work well for newsprint at 1000 PTO. Average particle size is 4" x 6". Mesh end gate is recommended. (Snow fence plastic)
- LANDSCAPE MULCHING:** Equipped with the optional Swivel Giraffe Chute and run at 1000RPM, the machines work very well for mulching applications.

SPECIFICATIONS T5050

Refer to the Tomahawk Application Guide for detailed descriptions of options and applications. [\(Click here\)](#)

	T5050
Width – Transport (with chutes closed)	6'7"
Width - Operating	8'2"
Width - Operating with Giraffe	9'
Drum Diameter	6'
Standard Drum Length	5'
Nominal Bale Diameter	5'
Height Overall*	7'10"
Discharge Height - Lower Chute* (left side)	1'4"
Discharge Height - Upper Chute* (right side)	3'9"
Silage Giraffe Discharge Height* (left side)	5'
Straw Giraffe Discharge Height* (left side)	6'
PTO Horsepower Required (Minimum)**	60HP

*Heights with machine resting on the ground. When operating these heights can be increased by up to 3' depending on the tractor.

**Horsepower listed is to run the machine. Tractors must have adequate lift capacity on 3pt and front weights to safely carry the machine with a bale.

Specify either 540RPM or 1000RPM application when ordering. The rotor is direct drive from the PTO and will run at either speed.



CUMMINGS & BRICKER

www.cummingsandbricker.com
support@cummingsandbricker.com

Effective: 12/22/2025

Revised: 07/09/2026

F.O.B. C&B

Teagle

DRUM TYPE BALE SHREDDERS

3PT MOUNTED BALE SHREDDERS FOR SILAGE OR DRY BALES

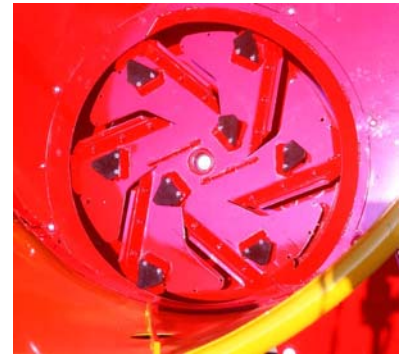
ITEM NUMBER	DESCRIPTION	WEIGHT	PRICE
T5050	For round bales up to 5 1/2' diameter. (Standard with Extended End Gate to accomodate 5'long bales)(Specify for 540 or 1000RPM when ordering)	1600	\$28,334.00



T5050 with optional Swivel Giraffe Chute operating at 1000 RPM for mulching.



Discharging from both upper right hand and lower left hand chutes for free stall bedding. (standard on all C&B machines)



Silage rotor handles both wet and dry bales. Input can be 540 rpm or 1000 rpm



DRUM TYPE BALE SHREDDERS

HAMMERMILL ROTOR MACHINE

ITEM NUMBER	DESCRIPTION	WEIGHT	PRICE
T505M1000	T505 with hammermill rotor-1000 RPM PTO Required-Produces very short length product with various screen sizes- Dry material only-Choice of one screen included with machine	1620	\$29,682.00



T505M Hammer Mill Rotor

The mill rotor utilizes sets of swinging knives, fixed paddles, and a screen.

Run at 1000 RPM PTO speed the machine produces a uniform chop length determined by screen size used. Designed for bedding in slotted floor barns, poultry houses, and for feeding chopped straw to dairy cows as filler.

Same dimensions as T5050.

Machines include the choice of one screen.



T505M shown with optional SC1227 upper left hand chute.

SCREENS AVAILABLE FOR HAMMERMILL MODELS

ITEM NUMBER	DESCRIPTION	PRICE
SC1660	Screen 13/16" Hole Size-Popular Size- T505M (21MM)	\$1,493.00
SC1661	Screen 1 7/16" Hole Size- Popular Size- T505M (36MM)	\$1,493.00
SC1775	Screen 5/16" Hole size T404M/505M (8MM)	\$1,493.00
SC1674	Screen 3/8" Hole Size T505M (10MM)	\$1,493.00
SC1673	Screen 1/2" Hole Size T505M (13MM)	\$1,493.00
SC1676	Screen 19/32" Hole Size T505M (15MM)	\$1,493.00
SC1695	Screen 23/32" Hole Size T505M (18MM)	\$1,493.00
SC1677	Screen 1 1/8" Hole Size T505M (28MM)	\$1,493.00
SC1771	Screen 2" Hole Size T404M/T505M (50MM)	\$1,493.00
SC1662	Screen 5" Slotted T505M	\$1,493.00



CUMMINGS & BRICKER

www.cummingsandbricker.com
support@cummingsandbricker.com

Effective: 12/22/2025

Revised: 07/09/2026

F.O.B. C&B

Teagle

DRUM TYPE BALE SHREDDERS

OPTIONS FOR DRUM TYPE BALE SHREDDERS

DISCHARGE CHUTE OPTIONS

SWIVEL GIRAFFE CHUTES



ITEM NUMBER	DESCRIPTION	PRICE
SC1861K	T4040 Swivel Giraffe Chute With Hydraulic Rotator And Hoses-1000RPM Recommended-Dry Material Only	
SC1964K	T5050 Swivel Giraffe Chute With Hydraulic Rotator And Hoses-1000RPM Recommended-Dry Material Only	\$3,377.00
SC1442	Double Acting Hyd Flap Kit- For SC1861K/1964K/2536K- Requires 3rd Set of Remotes On Tractor.	\$1,304.00



GIRAFFE SILAGE CHUTES

ITEM NUMBER	DESCRIPTION	PRICE
SC1226	Giraffe Chute T4040-Discharges On the Left Side	\$1,549.00
SC1227	Giraffe Chute T505M-Mounts on left side of the machine-Dry material only-Max 35' @1000RPM	\$1,362.00
SC1305	Giraffe Chute T5050-Discharges On the Left Side	\$1,739.00

LOWER CHUTE WITH REAR DEFLECTOR

ITEM NUMBER	DESCRIPTION	PRICE
SC1871	Rearward Deflector 135 DEG - Requires SC1867, T404M/505M/5050	\$1,159.00
SC1867	Lower Chute 5050 - 404M/4040/505M/5050	\$551.00

BLOWER KIT

ITEM NUMBER	DESCRIPTION	PRICE
SC2230	Fine Mesh For Tailgate	\$957.00



CUMMINGS & BRICKER

www.cummingsandbricker.com
support@cummingsandbricker.com

Effective: 12/22/2025

Revised: 07/09/2026

F.O.B. C&B



DRUM TYPE BALE SHREDDERS

OPTIONS FOR DRUM TYPE BALE SHREDDERS

OTHER OPTIONS

ITEM NUMBER	DESCRIPTION	PRICE
HTL	Hydraulic Top Link - CAT II/III (With Check Valve)	\$1,575.00
RDC	Trailed Chassis - For Drum Models	\$10,754.00
PTO8130	PTO Shaft - WA Joint 20 spline/6 Spline - For Drum Machines (Std On T500B)	\$1,290.00

Trailed Chassis For Round Drum Tomahawks.

An extendable trailed chassis unit that will fit both the 400 and 500 series bale processors including the XL long drum on the 500 series.

Quick and easy coupling.



Standard Features (Item# SC1980)

- Pivoting axle allowing the drum to be lowered for loading and inclined when operating.
- Hydraulic check valves on pivoting axle rams
- Clevis Hitch Drawbar
- Jack
- Wheels 10.5 x 15.6 stud (Maximum speed 25 mph)
- Tractor will require 2 double acting hydraulic services (for drum rotation and pivoting axle rams)
- Powder coated chassis
- Hose extensions



T5050XL shown with optional left hand Swivel Giraffe Chute



Feeding with optional left hand Silage Giraffe Chute



DRUM TYPE BALE SHREDDERS

TOMAHAWK TURBO MILL

ITEM NUMBER	DESCRIPTION	PRICE
T500B	Tomahawk W/ Blower System	\$59,132.00
T500BXL	Tomahawk W/ Blower System - 9' Drum	\$65,393.00

OPTIONS FOR TOMAHAWK TURBO MILL

ITEM NUMBER	DESCRIPTION	PRICE
SC2307	65' Flex Hose - Includes Male Coupler & Sleeve	\$1,957.00
SC2335	Deflector For Bauer Connector - For Model T500B	\$1,217.00
SC2336	Asymetric Diverter Valve - For Model T500B	\$1,870.00
SC2337	Symetric Diverter Valve For Model T500B	\$2,116.00
SC2350	Dust Suppression Kit - Includes Pump, Tank, Nozzles In Outlet	\$3,319.00
SC1994	72" Drum Ilo 60" - Factory Option	\$464.00

TOMAHAWK 500B TURBO MILL

Ideal for poultry & cubicle bedding, preprocessing for TMR & crop mulching.

- High speed turbo fan delivers processed material through a 5" diameter pipe up to 262' at a high rate when tractor PTO is engaged.
- Knife system for high feed rate – use only with screen sizes greater than 1/2".



	500M	500XLM
Drum Diameter	6' (internal)	6' (internal)
Max Round Bale Diameter	5'	5'
Max Rectangular Bale Size	na	48" x 48" x 96"
Height Overall w/machine on ground	8'	9' 2"
Width with chutes closed	9'	9' 3"
Length Overall	8' 3/8"	13'
Min. Tractor PTO	120 HP	120 HP
Weight	3065 lbs.	3836 lbs.

DRUM MACHINE FEED SLIDE

ITEM NUMBER	DESCRIPTION	WEIGHT	PRICE
T505FSM1000	Tomahawk T505FSM Feed Slide Knife Rotor / Choice Of 1 Screen	3055	\$43,320.00

TOMAHAWK T505FSM FEED SLIDE

This milling system is suited for processing short material for TMR, Cubicles or Poultry Bedding.

The rear hydraulically angled slide allows constant material feed when the mill is operating in a stationary position. Output is increased up to 4 tons per hour by eliminating stopping and starting of the drum/machine to load the bale.



	505FSM
Overall Length	162"
Transport Width***	80"
Operating Width	123"
Lower Chute Discharge Height*	22"
Upper Chute Discharge Height*	50"
Straw Giraffe Discharge Height*	72"
Weight	3055



*Working heights will increase by up to 36" depending on tractor ***Chute extension not fitted



DRUM TYPE BALE SHREDDERS

ELECTRIC DRIVE DRUM TYPE BALE PROCESSOR

ITEM NUMBER	DESCRIPTION	PRICE
T500E	Tomahawk 500E With Electric Drive - 10' Conveyor, 45KW Electric Rotor Drive Motor	\$132,335.00
EDSCONV2	9' 10" Conveyor (Additional) - For T500E	\$16,797.00

T500E Electric Mill Drum Bale Processor

An automated Feed Conveyor and Straw Mill for round and rectangular bales. The mill is equipped with a 45kW (62HP) electric motor to process up to 3.9t/hr. Processed material can then be discharged at low or high level or transferred up to 200ft with an optional transfer fan. Calibrate dry material (recommended <20% moisture content) from 3/8" to 5" by changing the screen size in the mill. Screens are available with 3/8", 1/2", 19/32", 23/32", 13/16", 1", 1-1/8", 1-7/16", 2", holes and 5" slots.



		500E
	Rotor Speed	1000 RPM
	Bale chamber diameter at base	71"
	Max round bale diameter	60"
	Max rectangular bale size	4' x 4' x 8'
	Overall height (chute closed)	106"
	Overall width	79"
	Machine length	157"
	Machine length including 1 conveyor	297"

STANDARD FEATURES

- 62HP Electric mill system
- Electric feed conveyor (1 section)

OPTIONS

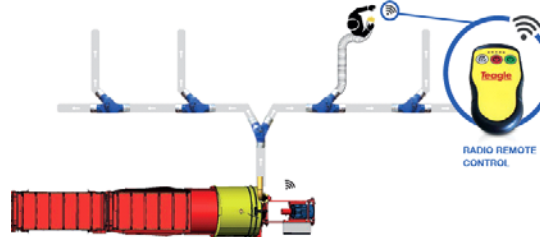
- Additional feed conveyors (up to 4 total)
- Various outlet chutes
- Booster Fan to transfer processed material
- Liquid dust suppression/dust removal cyclone

ELECTRIC ADVANTAGE

- ✓ **Lowers running cost** with a smaller drive
- ✓ **Reduces peak loading**
- ✓ **Non-stop feed** providing continuous material to be processed, reducing idle time
- ✓ **Reduces waste** by shutting down when conveyor is empty
- ✓ **No tractor required** which reduces fuel/maintenance cost and doesn't tie up a valuable tractor
- ✓ **Quieter operation**
- ✓ **Reduces environmental footprint** by using an electric drive.

HIGH SPEED FAN can be connected to various delivery systems.

- ✓ Machine can remain outside the building,
- ✓ no risk of cross contamination,
- ✓ Quick release coupling for distribution connections,
- ✓ Radio remote for simple operation





HIGH CAPACITY TUB GRINDER

ITEM NUMBER	DESCRIPTION	PRICE
C120	Calibrator Bale Processor - 6 Screens	\$192,592.00

C120 Bale Processor

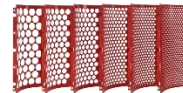
A high-capacity tub grinder for dry materials such as straw and grass for bedding, feeding and biofuel applications.

- Folding tub to fall within the legal road transport width. A heavy duty double pitch chain drives the tub which sits on large diameter rollers.
- Quick change screens
- Angled guards keep machine clean
- Shearbolt protection, overrun protection, and finally a massive 8 belt drive system with 200HP capacity
- Rotor speed is monitored electronically and the bale chamber rotation automatically governed to optimize throughput to suit the tractor power.
- The C120 incorporates a high strength chassis, air brakes, approved 285/55 R22 wheels and hitch options. Road lighting includes LED lamps and rotating beacon, and side markers.



C120	
PTO Speed	1000 RPM
Loading Height	111"
Transport Width	94" (folded)
Transport Length	231"
Transport Height	129"
Overall Length	359"
Conveyor Discharge Height	180"
Bale Chamber Diameter at Base	86"
Bale Chamber Loading Diameter	118"
Weight	6 ton

OPTIONS:



Additional Screens



Conveyor Deflector



Drawback Hitch & Jack



Grain Milling Hopper

OPTIONS FOR TUB GRINDER

ITEM NUMBER	DESCRIPTION	PRICE
GMH120	Hopper For Grain Milling - 85 Bushel, Add Screens	\$17,855.00

AVAILABLE SCREENS

ITEM NUMBER	DESCRIPTION	PRICE
CM2366	4 15/16" Screen - For C120	
CM2072	3 15/16" Screen - For C120	\$884.00
CM2073	2 15/16" Screen - For C120	\$884.00
CM2074	2 3/16" Screen -For C120	\$884.00
CM2079	2" Screen - For C120	\$1,261.00
CM2075	1 9/16" Screen - For C120	\$1,261.00
CM2076	1 3/16" Screen - For C120	\$1,261.00
CM2077	13/16" Screen - For C120	\$1,478.00
CM2361	1/2" Screen - For C120	\$1,418.00
CM2373	3/8" Screen - For C120	\$1,418.00
CM2078	5/16" Screen - For C120	\$1,623.00
CM2080	5/32" Screen - For C120	\$1,623.00